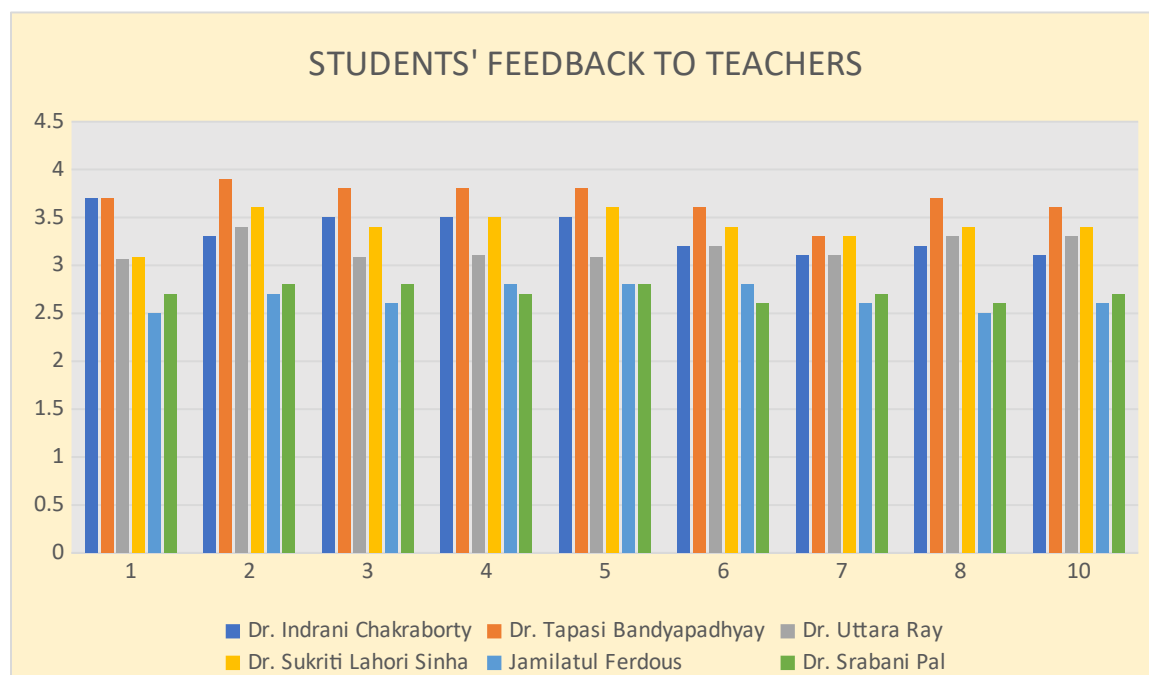


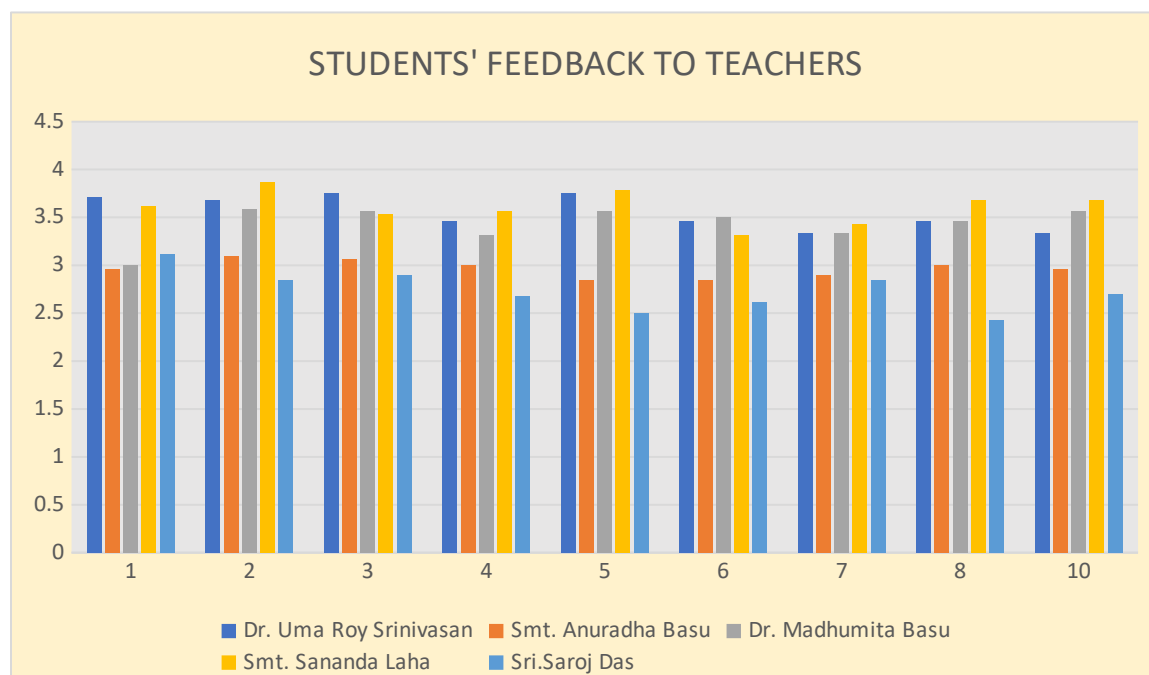
### Feedback parameters for teachers by 3<sup>rd</sup> yr Hons. stds 2020

1. Teacher's Regularity and Punctuality
2. Sincerity and Commitment of the Teacher
3. Timely completion of the syllabus
4. Interaction with the Teacher
5. How far the Teacher can explain the questions of the students?
6. Initiative to motivate students by giving assignments
7. Timely checking of assignments
8. Help extended by the teacher outside the classroom
9. Teacher's support during practical class (For lab-based dept. only) **Not applicable**
10. Overall rating of the Teacher



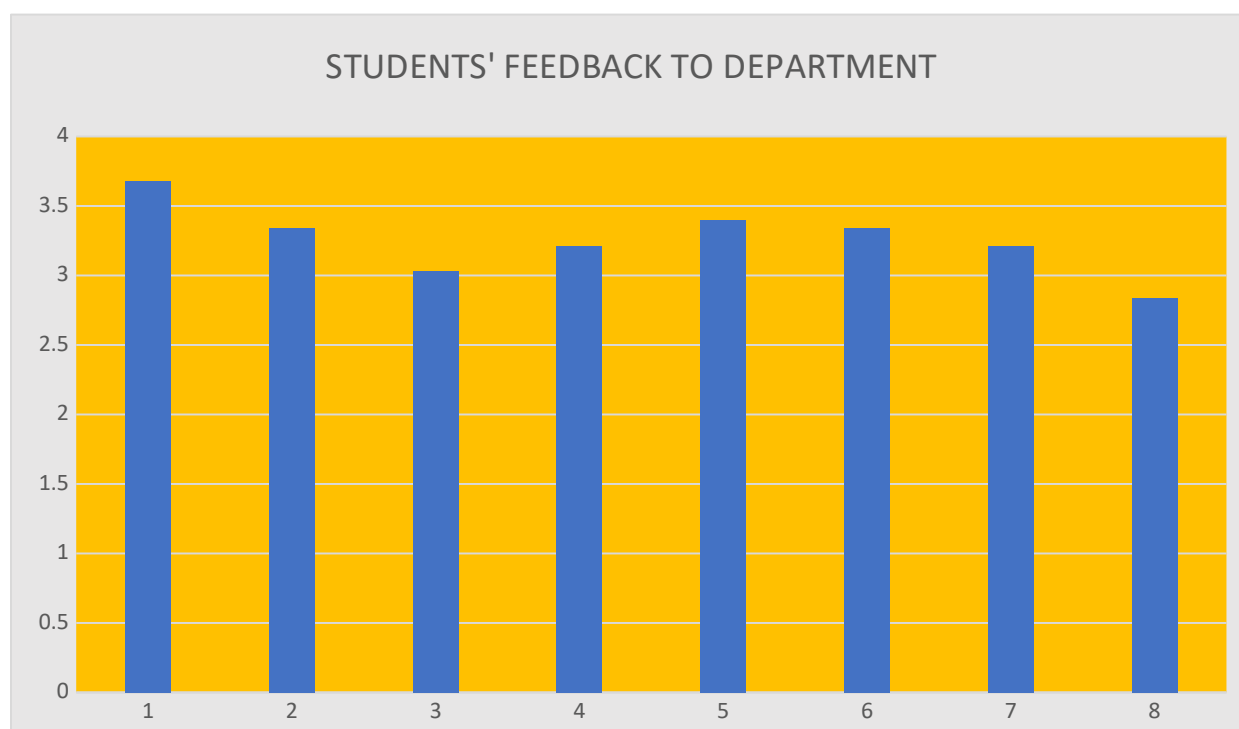
### **Feedback parameters for teachers by 3<sup>rd</sup> yr Hons. stds 2020**

1. Teacher's Regularity and Punctuality
2. Sincerity and Commitment of the Teacher
3. Timely completion of the syllabus
4. Interaction with the Teacher
5. How far the Teacher can explain the questions of the students?
6. Initiative to motivate students by giving assignments
7. Timely checking of assignments
8. Help extended by the teacher outside the classroom
9. Teacher's support during practical class (For lab-based dept. only)
10. Overall rating of the Teacher



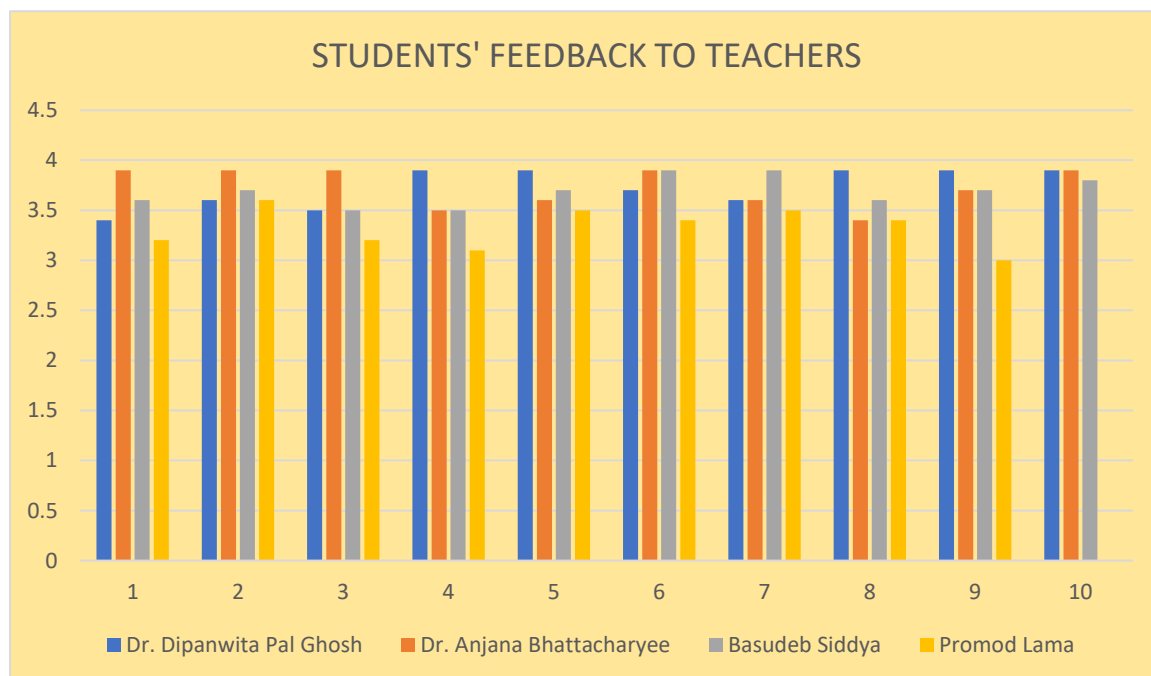
**The following 8 parameters were presented to the students of Hons. Departments**

1. Academic environment of the department
2. Interaction with the faculty
3. Departmental library facilities
4. Timely completion of the syllabus
5. Initiative to motivate students
6. Help extended by the teachers outside the classroom
7. Student-Teacher relationship
8. Co and Extra-curricular activities arranged by department (Project/Field works, Quiz, seminar, students' talk, Extended programmes, Cultural activities etc.)



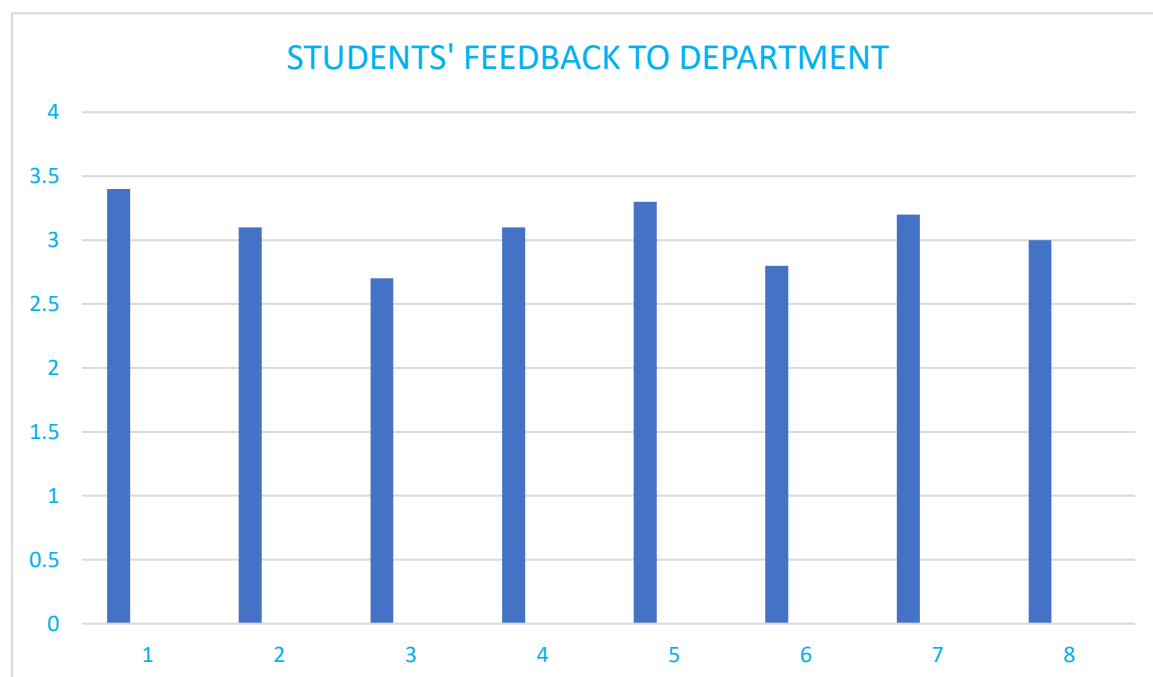
### **Feedback parameters for teachers by 3<sup>rd</sup> yr Hons. stds 2020**

1. Teacher's Regularity and Punctuality
2. Sincerity and Commitment of the Teacher
3. Timely completion of the syllabus
4. Interaction with the Teacher
5. How far the Teacher can explain the questions of the students?
6. Initiative to motivate students by giving assignments
7. Timely checking of assignments
8. Help extended by the teacher outside the classroom
9. Teacher's support during practical class (For lab-based dept. only)
10. Overall rating of the Teacher



**The following 8 parameters were presented to the students of Hons. Departments**

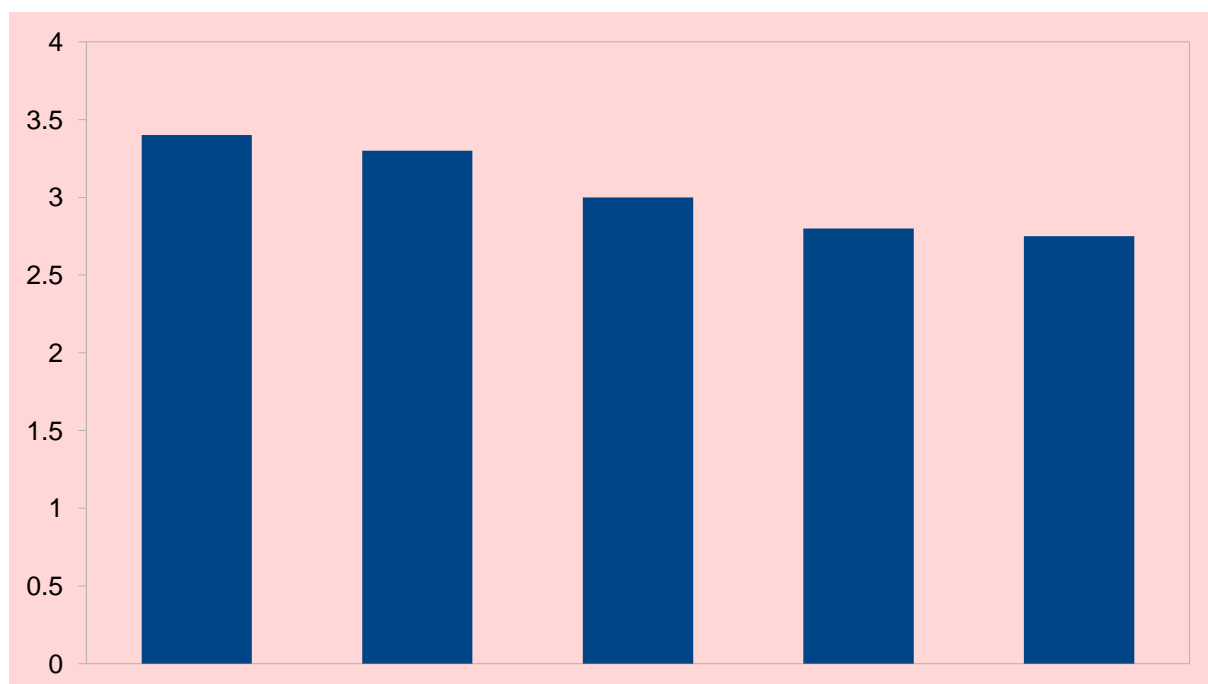
1. Academic environment of the department
2. Interaction with the faculty
3. Departmental library facilities
4. Timely completion of the syllabus
5. Initiative to motivate students
6. Help extended by the teachers outside the classroom
7. Student-Teacher relationship
8. Co and Extra-curricular activities arranged by department (Project/Field works, Quiz, seminar, students' talk, Extended programmes, Cultural activities etc.)



### **Feedback parameters for Lab-based Departments only**

The following 5 parameters were presented to the Hons. students of Lab-based Departments only:

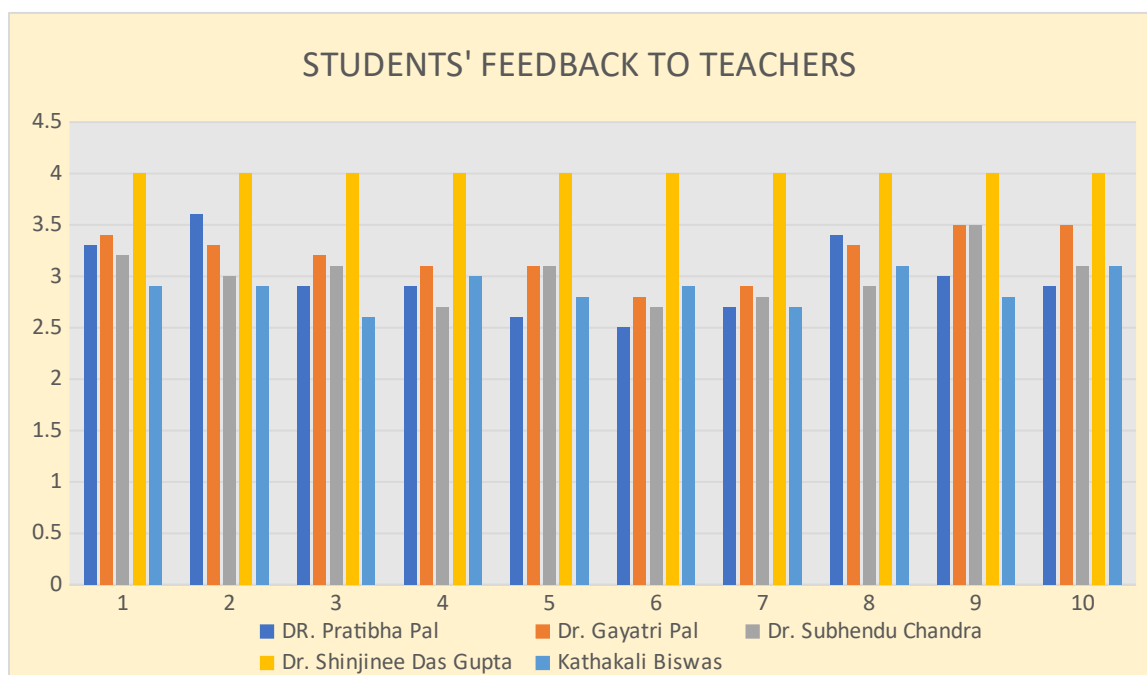
1. Timely completion of the practical syllabus
2. Facilities of practicals as per syllabus
3. Scope of practice of practical classes
4. Support received from non-teaching lab. staff
5. Condition of practical rooms





### **Feedback parameters for teachers by 3<sup>rd</sup> yr Hons. stds 2020**

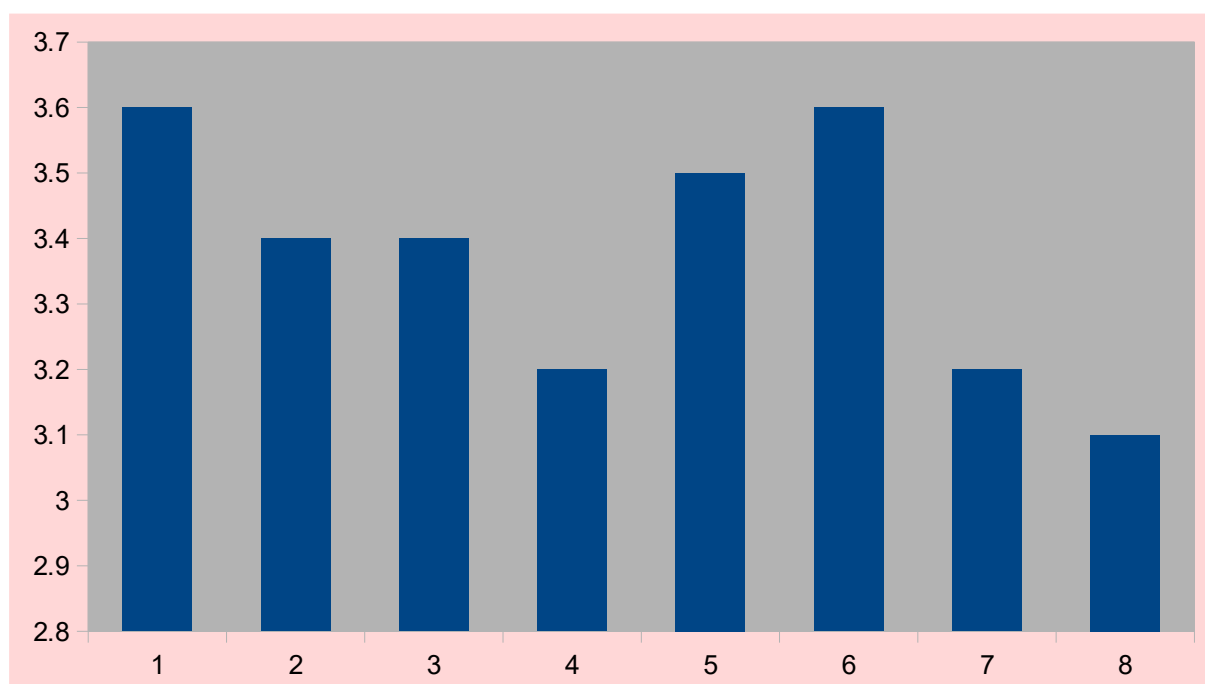
1. Teacher's Regularity and Punctuality
2. Sincerity and Commitment of the Teacher
3. Timely completion of the syllabus
4. Interaction with the Teacher
5. How far the Teacher can explain the questions of the students?
6. Initiative to motivate students by giving assignments
7. Timely checking of assignments
8. Help extended by the teacher outside the classroom
9. Teacher's support during practical class (For lab-based dept. only)
10. Overall rating of the Teacher





**The following 8 parameters were presented to the students of Hons. Departments**

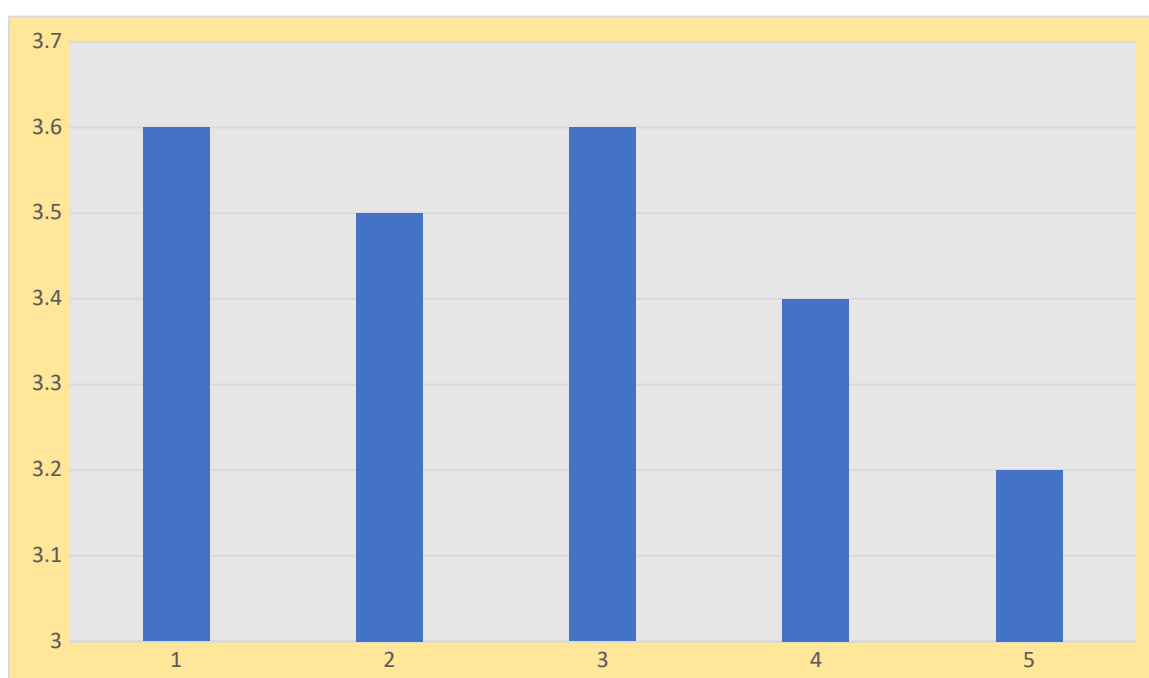
1. Academic environment of the department
2. Interaction with the faculty
3. Departmental library facilities
4. Timely completion of the syllabus
5. Initiative to motivate students
6. Help extended by the teachers outside the classroom
7. Student-Teacher relationship
8. Co and Extra-curricular activities arranged by department (Project/Field works, Quiz, seminar, students' talk, Extended programmes, Cultural activities etc.)



### **Feedback parameters for Lab-based Departments only**

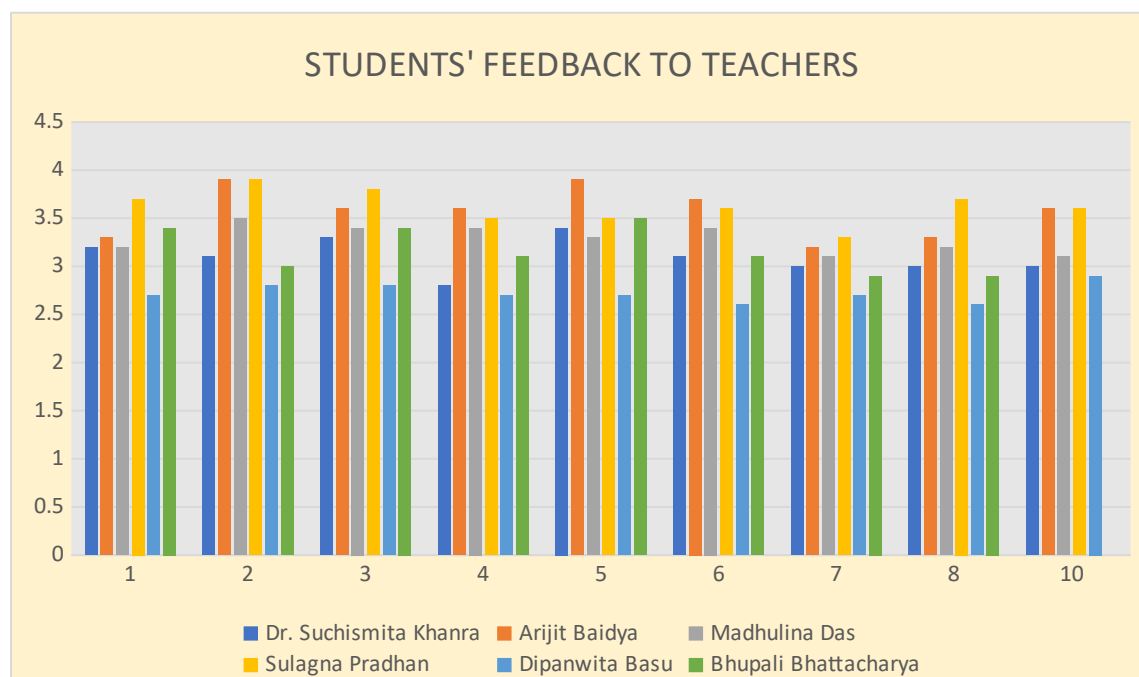
The following 5 parameters were presented to the Hons. students of Lab-based Departments only:

1. Timely completion of the practical syllabus
2. Facilities of practicals as per syllabus
3. Scope of practice of practical classes
4. Support received from non-teaching lab. staff
5. Condition of practical rooms



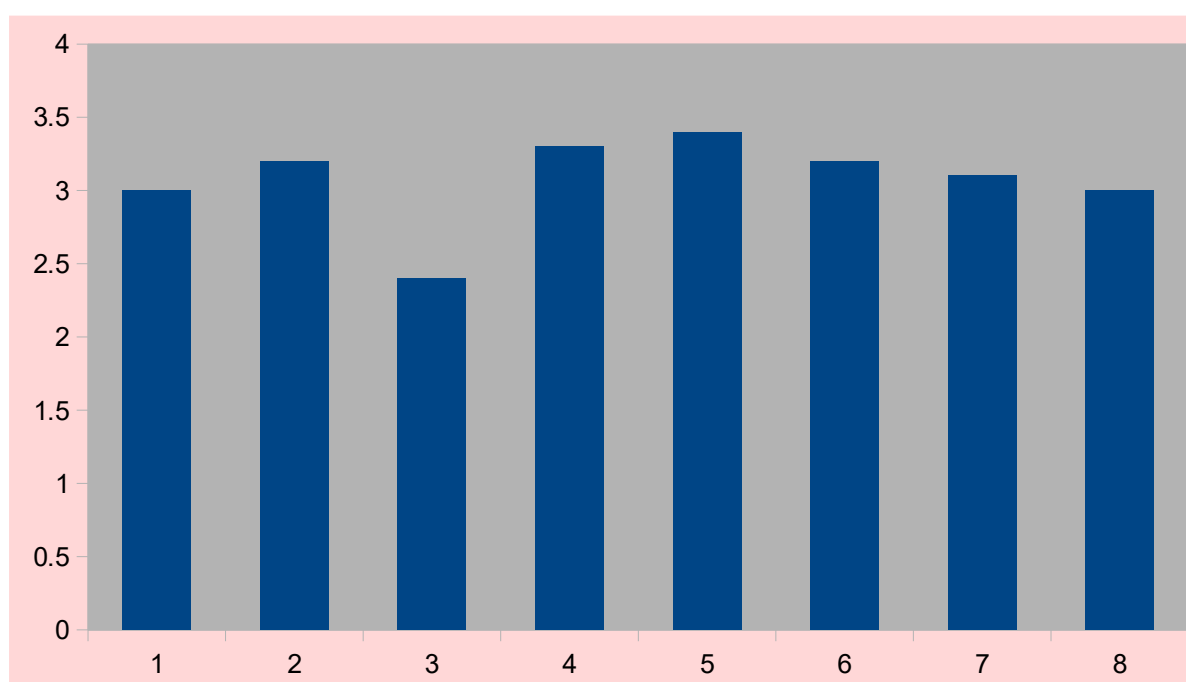
### Feedback parameters for teachers by 3<sup>rd</sup> yr Hons. stds 2020 (DEPT OF SANSKRIT)

1. Teacher's Regularity and Punctuality
2. Sincerity and Commitment of the Teacher
3. Timely completion of the syllabus
4. Interaction with the Teacher
5. How far the Teacher can explain the questions of the students?
6. Initiative to motivate students by giving assignments
7. Timely checking of assignments
8. Help extended by the teacher outside the classroom
9. Teacher's support during practical class (For lab-based dept. only) **Not Applicable**
10. Overall rating of the Teacher



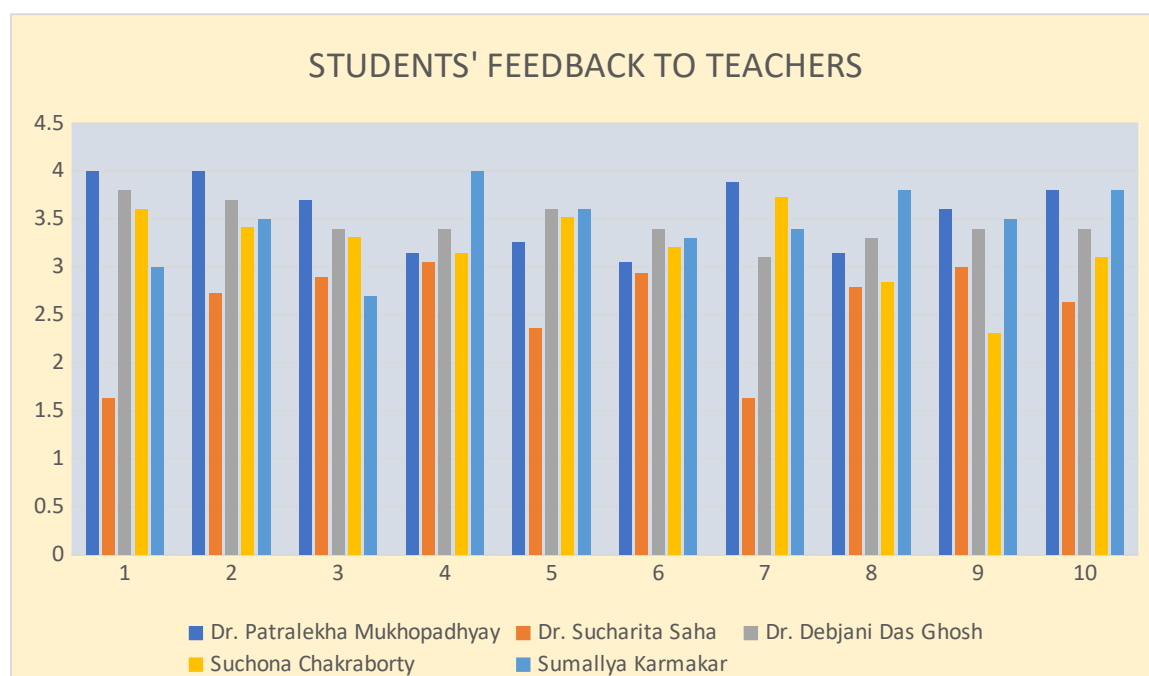
**The following 8 parameters were presented to the students of Hons. Departments**

1. Academic environment of the department
2. Interaction with the faculty
3. Departmental library facilities
4. Timely completion of the syllabus
5. Initiative to motivate students
6. Help extended by the teachers outside the classroom
7. Student-Teacher relationship
8. Co and Extra-curricular activities arranged by department (Project/Field works, Quiz, seminar, students' talk, Extended programmes, Cultural activities etc.)



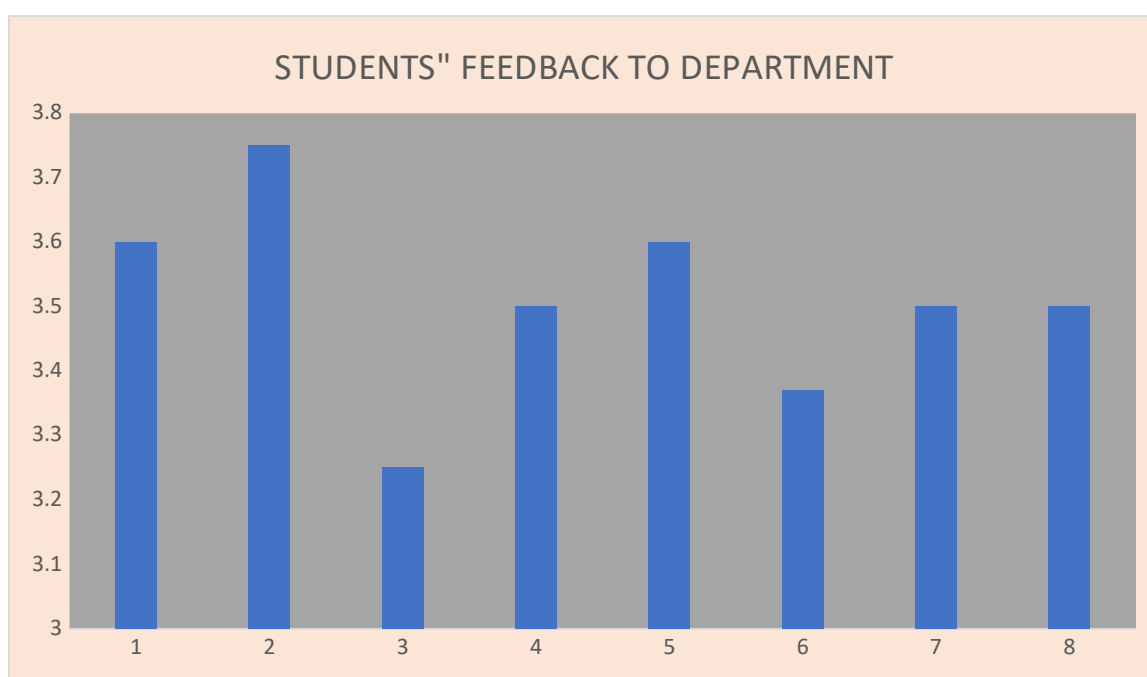
### Feedback parameters for teachers by 3<sup>rd</sup> yr Hons. stds 2020

1. Teacher's Regularity and Punctuality
2. Sincerity and Commitment of the Teacher
3. Timely completion of the syllabus
4. Interaction with the Teacher
5. How far the Teacher can explain the questions of the students?
6. Initiative to motivate students by giving assignments
7. Timely checking of assignments
8. Help extended by the teacher outside the classroom
9. Teacher's support during practical class (For lab-based dept. only)
10. Overall rating of the Teacher



**The following 8 parameters were presented to the students of Hons. Departments**

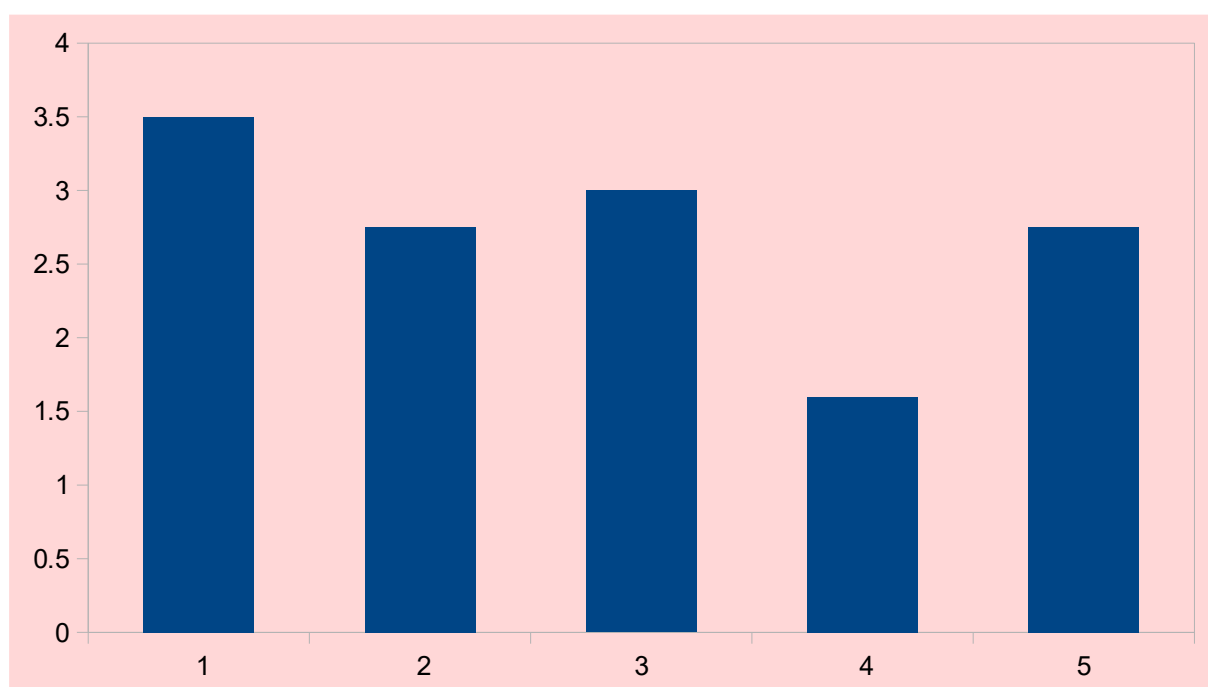
1. Academic environment of the department
2. Interaction with the faculty
3. Departmental library facilities
4. Timely completion of the syllabus
5. Initiative to motivate students
6. Help extended by the teachers outside the classroom
7. Student-Teacher relationship
8. Co and Extra-curricular activities arranged by department (Project/Field works, Quiz, seminar, students' talk, Extended programmes, Cultural activities etc.)



### **Feedback parameters for Lab-based Departments only**

The following 5 parameters were presented to the Hons. students of Lab-based Departments only:

1. Timely completion of the practical syllabus
2. Facilities of practicals as per syllabus
3. Scope of practice of practical classes
4. Support received from non-teaching lab. staff
5. Condition of practical rooms



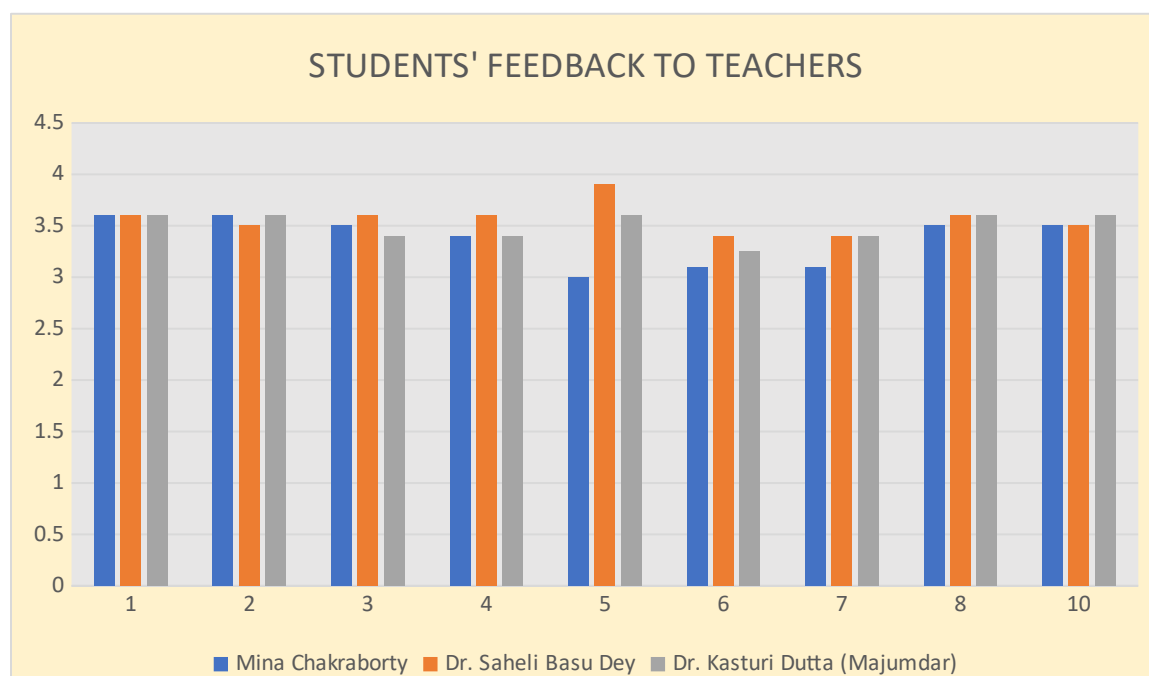






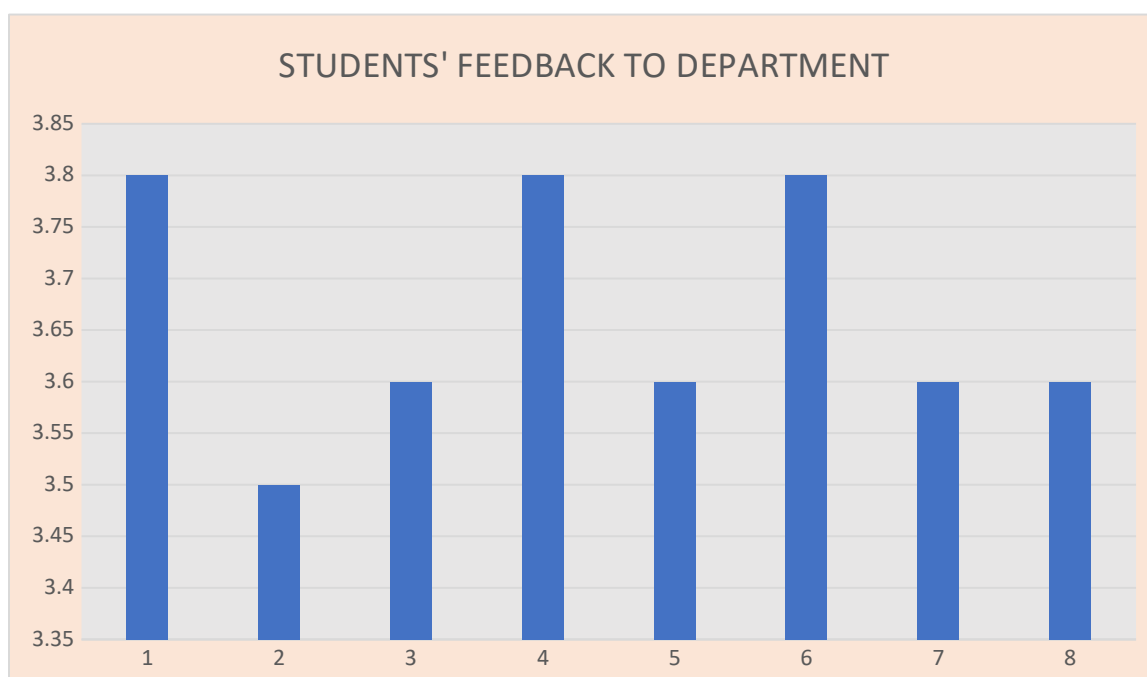
### Feedback parameters for teachers by 3<sup>rd</sup> yr Hons. stds 2020

1. Teacher's Regularity and Punctuality
2. Sincerity and Commitment of the Teacher
3. Timely completion of the syllabus
4. Interaction with the Teacher
5. How far the Teacher can explain the questions of the students?
6. Initiative to motivate students by giving assignments
7. Timely checking of assignments
8. Help extended by the teacher outside the classroom
9. Teacher's support during practical class (For lab-based dept. only) **Not applicable**
10. Overall rating of the Teacher



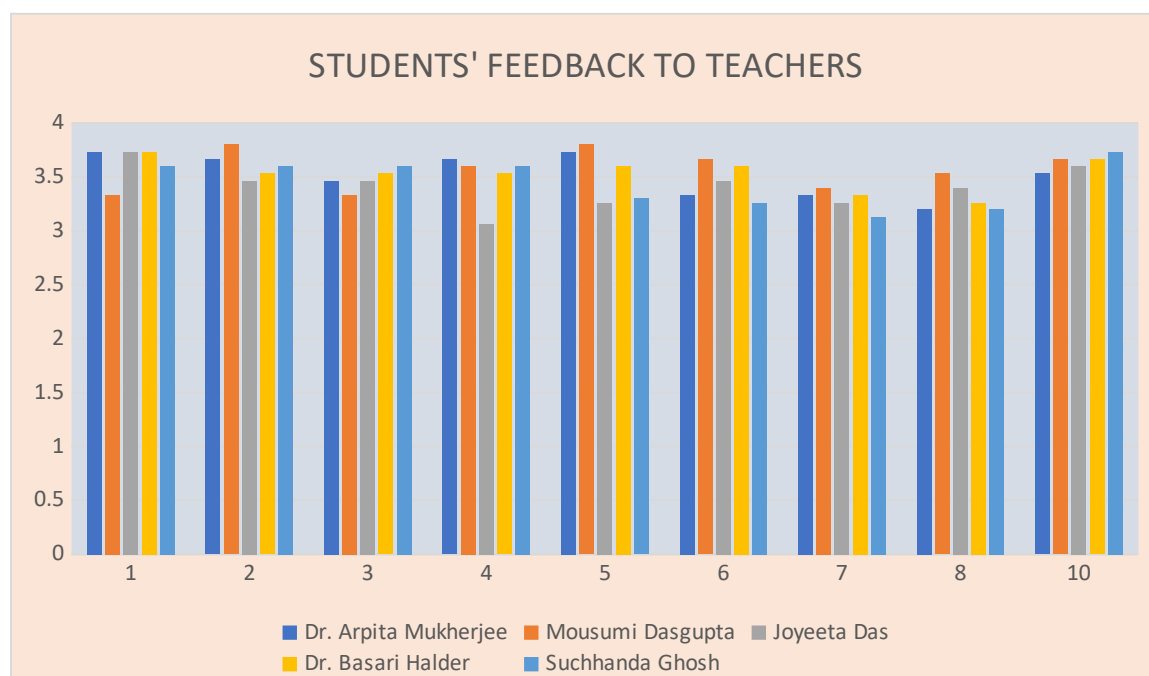
**The following 8 parameters were presented to the students of Hons. Departments**

1. Academic environment of the department
2. Interaction with the faculty
3. Departmental library facilities
4. Timely completion of the syllabus
5. Initiative to motivate students
6. Help extended by the teachers outside the classroom
7. Student-Teacher relationship
8. Co and Extra-curricular activities arranged by department (Project/Field works, Quiz, seminar, students' talk, Extended programmes, Cultural activities etc.)



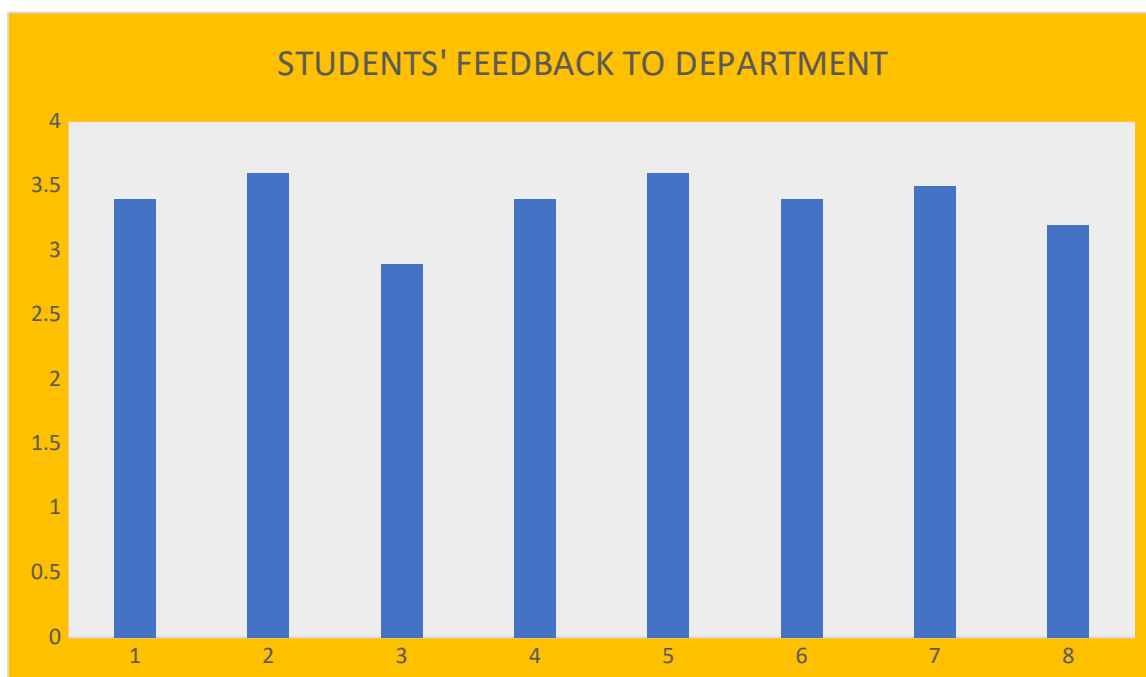
### Feedback parameters for teachers by 3<sup>rd</sup> yr Hons. stds 2020

1. Teacher's Regularity and Punctuality
2. Sincerity and Commitment of the Teacher
3. Timely completion of the syllabus
4. Interaction with the Teacher
5. How far the Teacher can explain the questions of the students?
6. Initiative to motivate students by giving assignments
7. Timely checking of assignments
8. Help extended by the teacher outside the classroom
9. Teacher's support during practical class (For lab-based dept. only) **Not applicable**
10. Overall rating of the Teacher



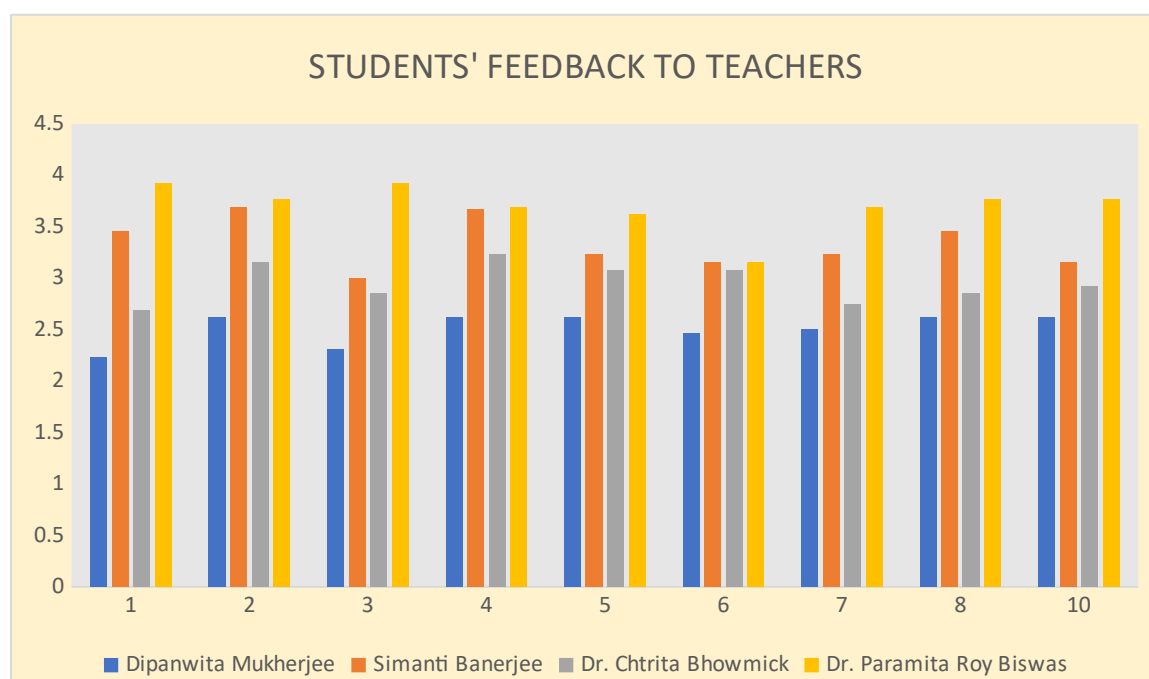
**The following 8 parameters were presented to the students of Hons. Departments**

1. Academic environment of the department
2. Interaction with the faculty
3. Departmental library facilities
4. Timely completion of the syllabus
5. Initiative to motivate students
6. Help extended by the teachers outside the classroom
7. Student-Teacher relationship
8. Co and Extra-curricular activities arranged by department (Project/Field works, Quiz, seminar, students' talk, Extended programmes, Cultural activities etc.)



### Feedback parameters for teachers by 3<sup>rd</sup> yr Hons. stds 2020

1. Teacher's Regularity and Punctuality
2. Sincerity and Commitment of the Teacher
3. Timely completion of the syllabus
4. Interaction with the Teacher
5. How far the Teacher can explain the questions of the students?
6. Initiative to motivate students by giving assignments
7. Timely checking of assignments
8. Help extended by the teacher outside the classroom
9. Teacher's support during practical class (For lab-based dept. only)
10. Overall rating of the Teacher



**The following 8 parameters were presented to the students of Hons. Departments**

1. Academic environment of the department
2. Interaction with the faculty
3. Departmental library facilities
4. Timely completion of the syllabus
5. Initiative to motivate students
6. Help extended by the teachers outside the classroom
7. Student-Teacher relationship
8. Co and Extra-curricular activities arranged by department (Project/Field works, Quiz, seminar, students' talk, Extended programmes, Cultural activities etc.)

