

## **Index**

### **Feedback Analysis on the Syllabus and its Transaction at the Institution from the following stakeholders –**

1. Students 2020	Page 1 -9
2. Students 2021	Page 10- 19
3. Teachers	Page 20 – 28
4. Alumni	Page 29

## **Analysis of Students' Feedback, 2020**

Q. A - Content and phrasing of the syllabus clear and concise.

Q. B - The learning materials like lectures, readings, videos, extension activities etc. practiced in your college pertain to the syllabus.

Q. C - The library, laboratory, electronic audio-visual resources, project and field-trips are adequate to deal with the curriculum.

Q. D - The syllabus designed is completed within the stipulated time.

Q. E - Teachers help you to identify your strengths and provide adequate guidance regarding your future prospects.

Q. F - Teachers are approachable and friendly beyond classroom teaching.

Q. G - The syllabus facilitate multi-disciplinary learning.

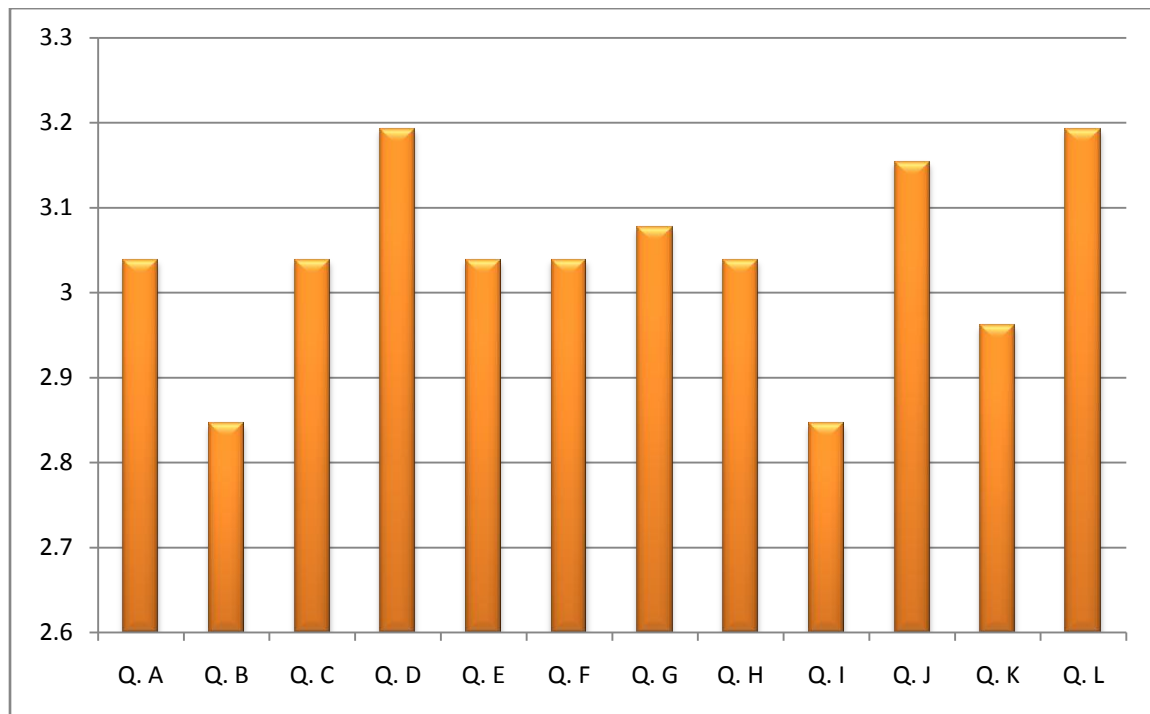
Q. H - The course facilitate development of intellectual skills like critical or creative thinking, problem-solving, quantitative reasoning etc.

Q. I - The course facilitate development of professional skills like written and oral communication, computer literacy, teamwork etc.

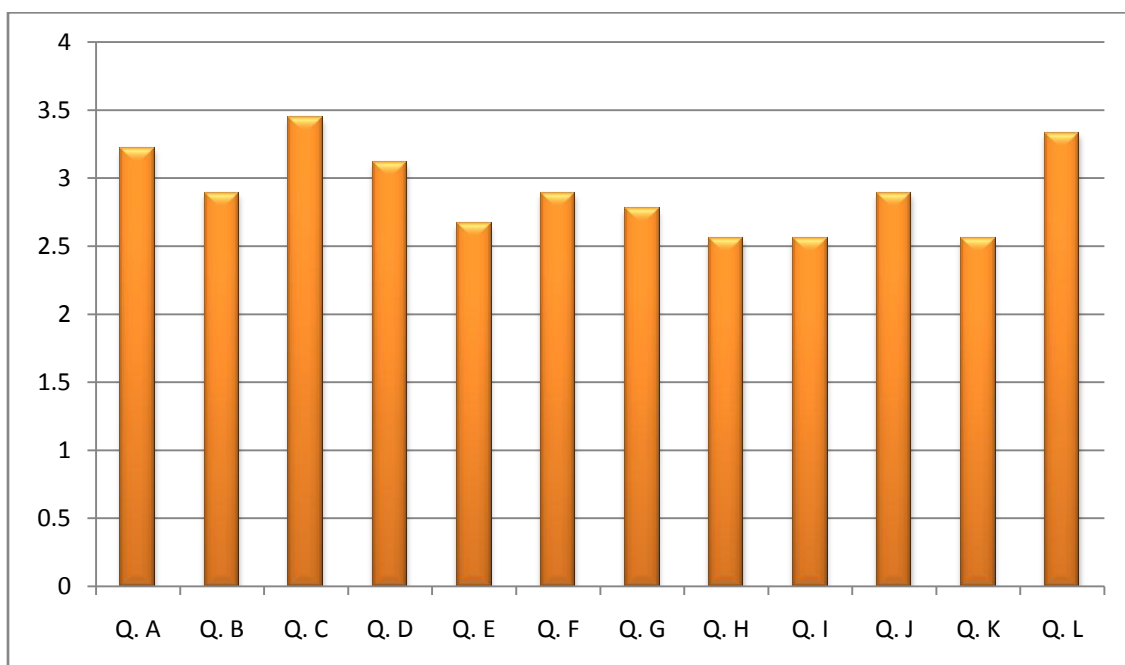
Q. J - The course enhances your social responsibility.

Q. K - The syllabus includes issues of contemporary relevance.

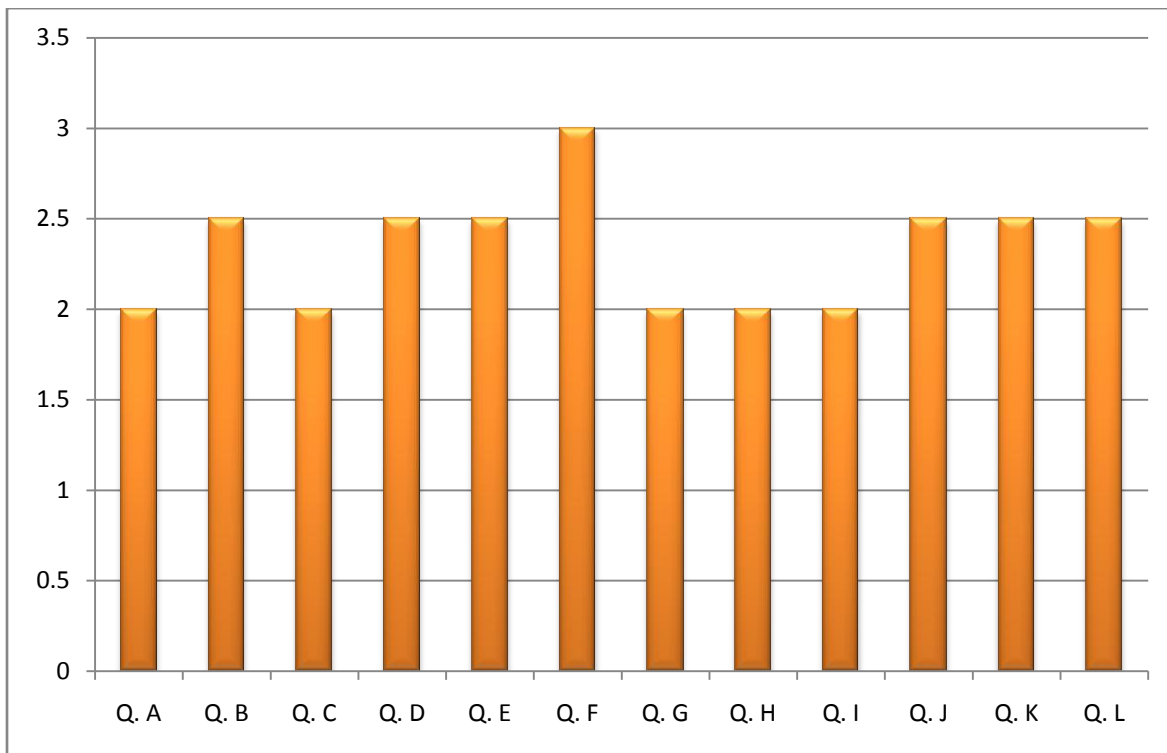
### Dept. of Bengali



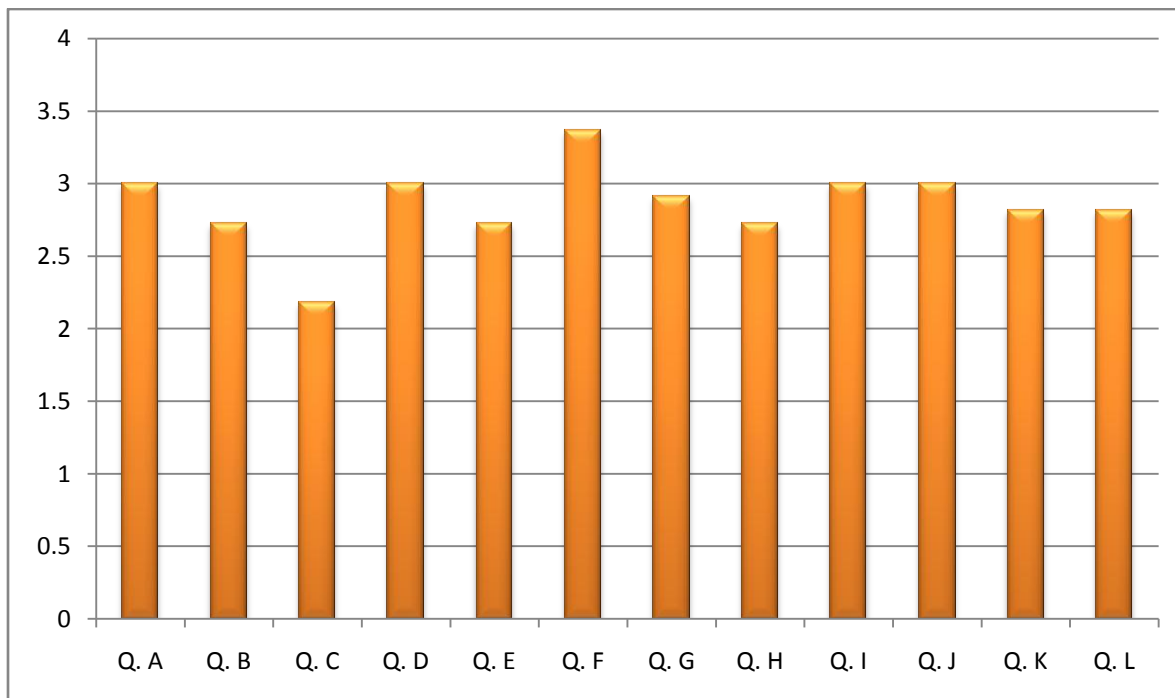
### Dept. of Botany



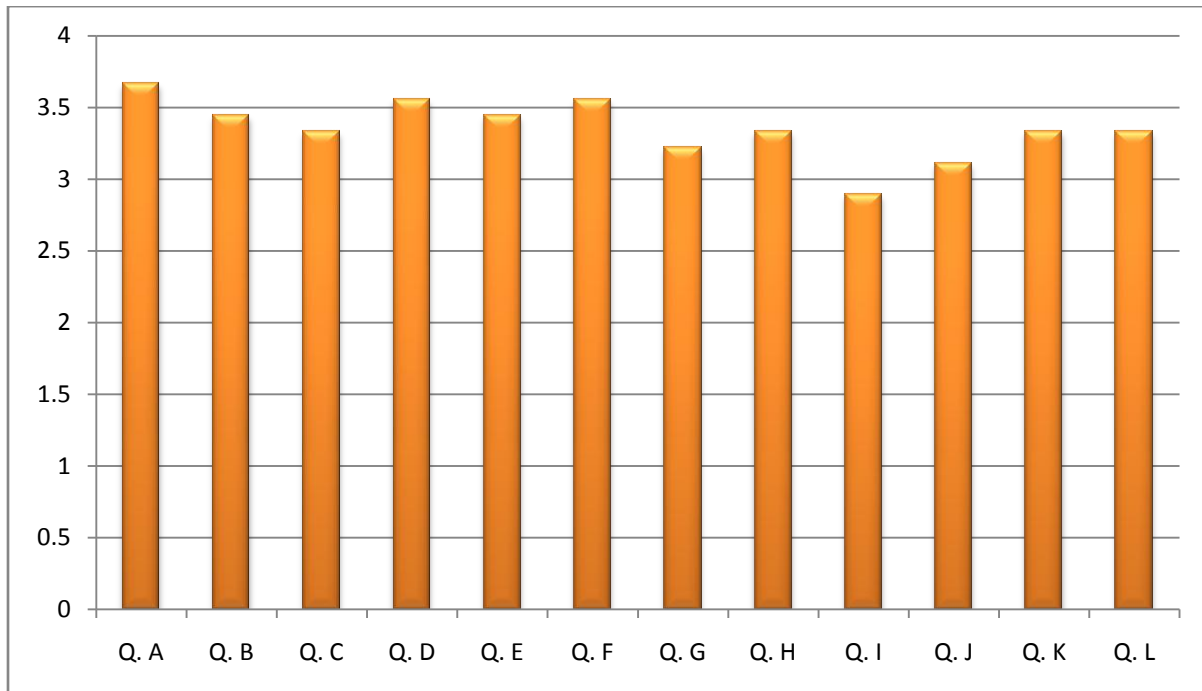
### Dept. of Chemistry



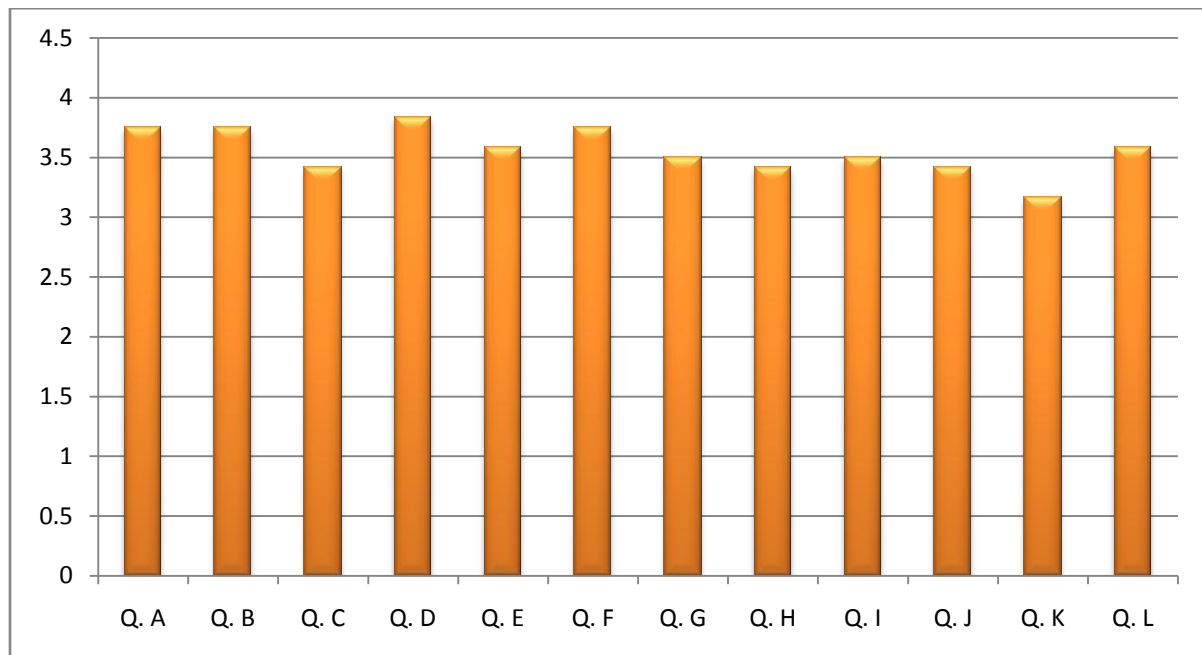
### Dept. of Commerce



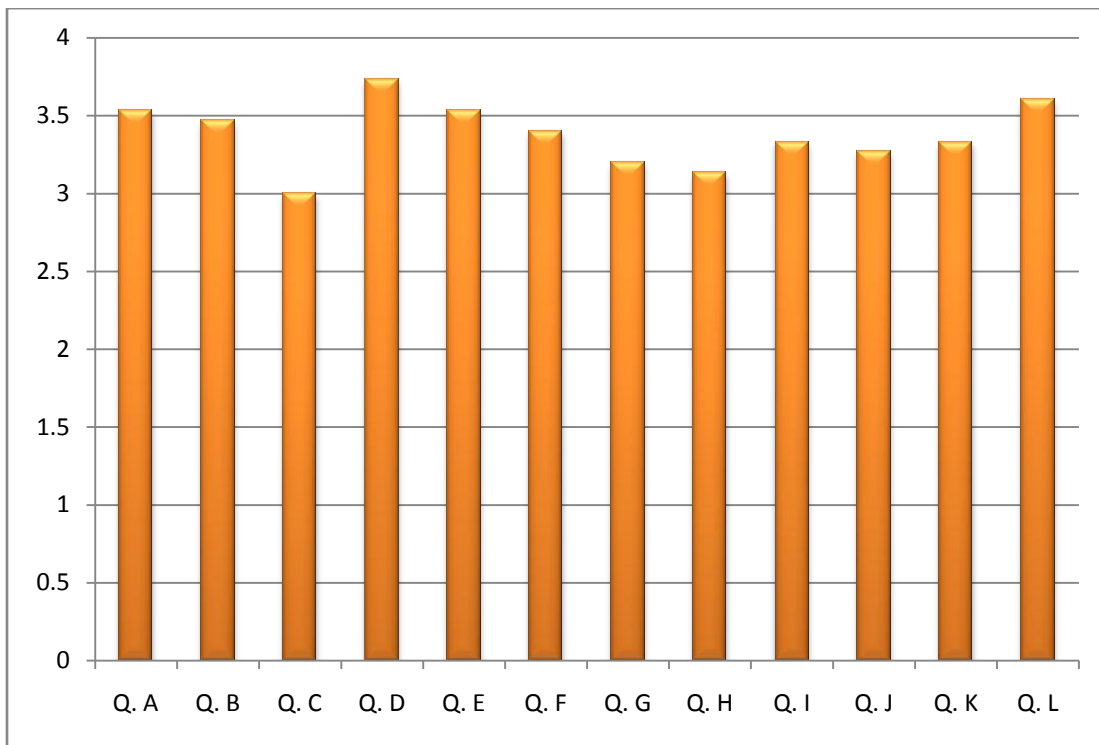
### Dept. of Economics



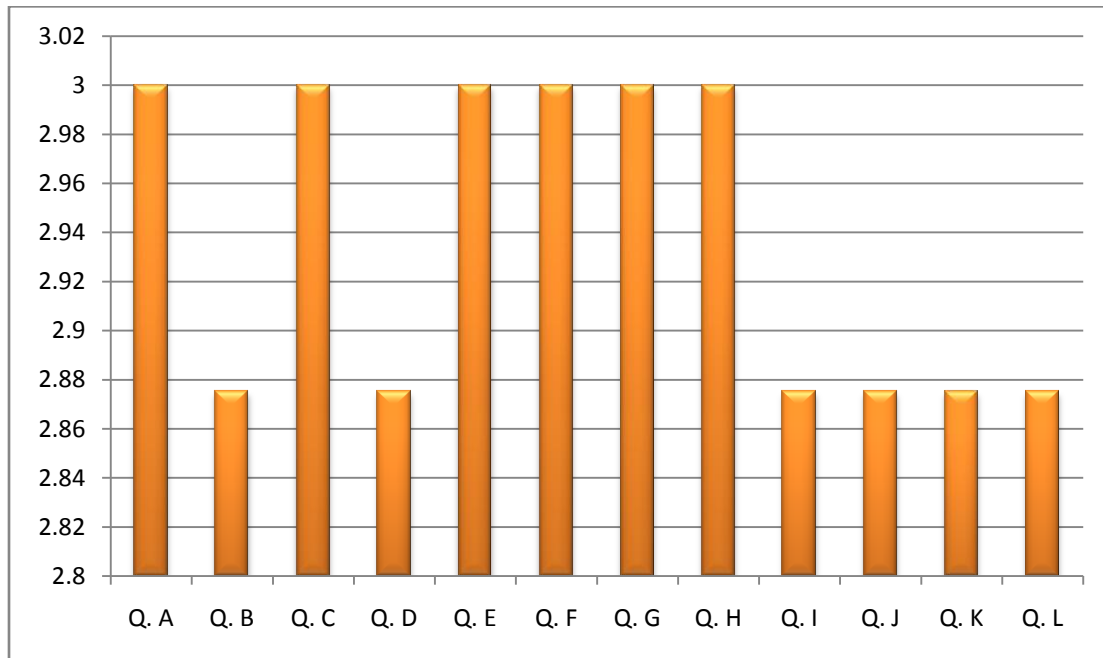
### Dept. of English



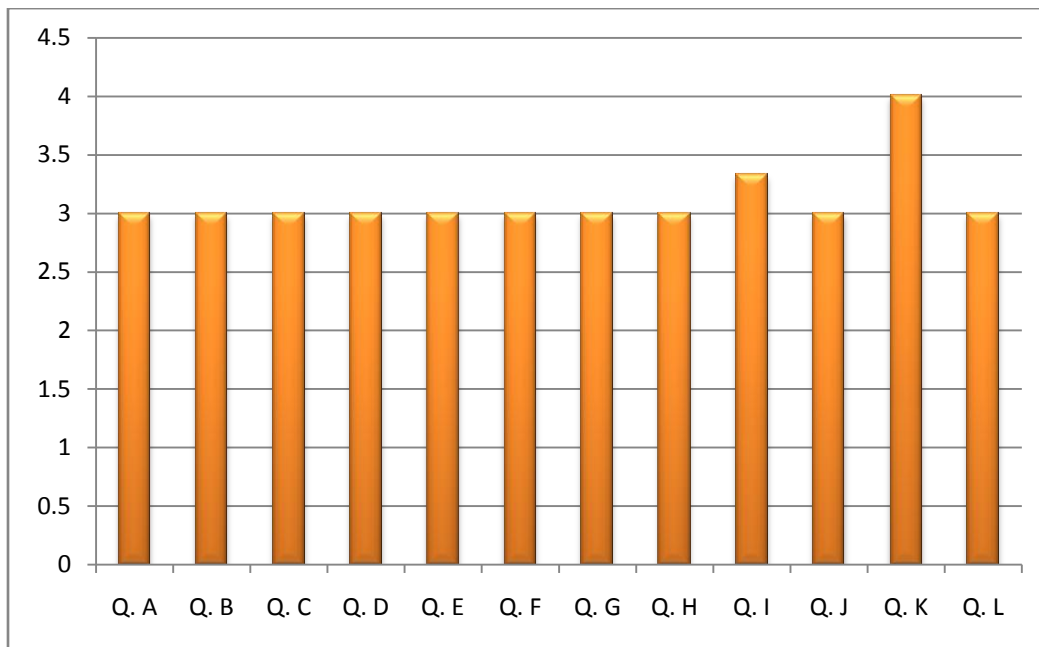
### Dept. of Geography



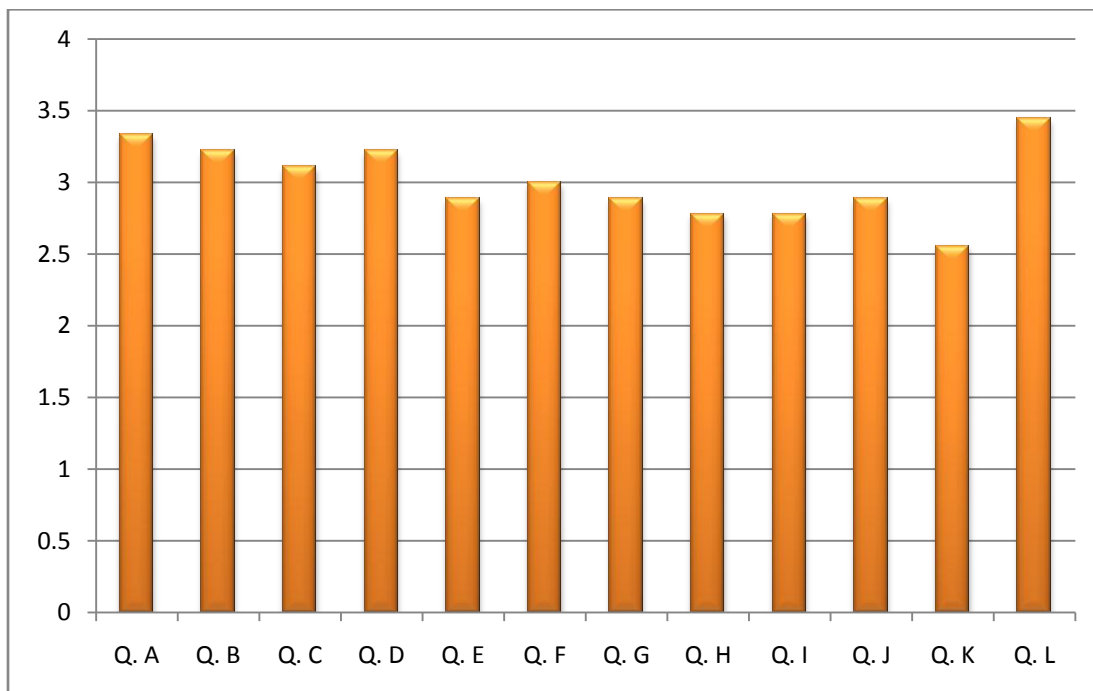
### Dept. of History



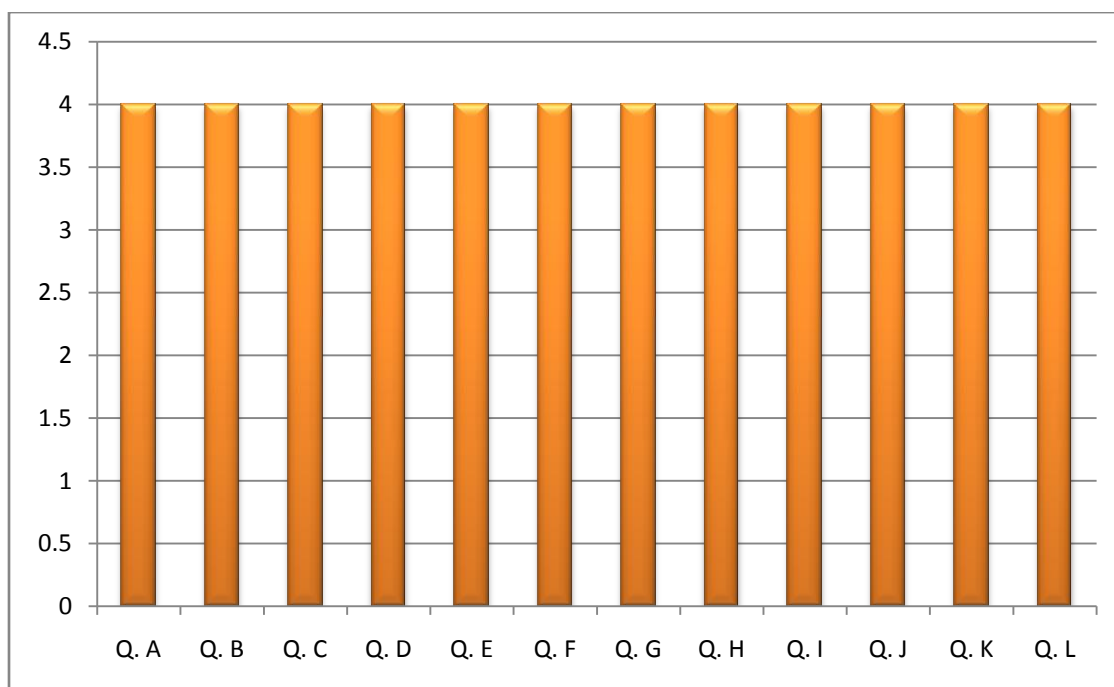
### Dept. of Mass communication and Journalism



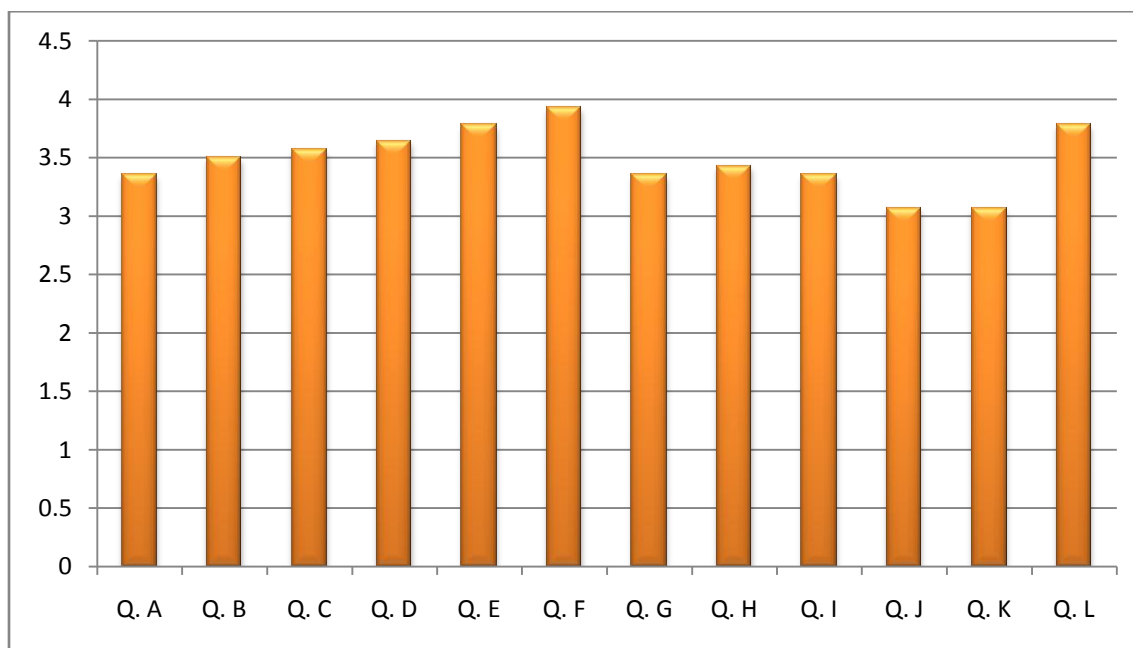
### Dept. of Mathematics



### Dept. of Philosophy

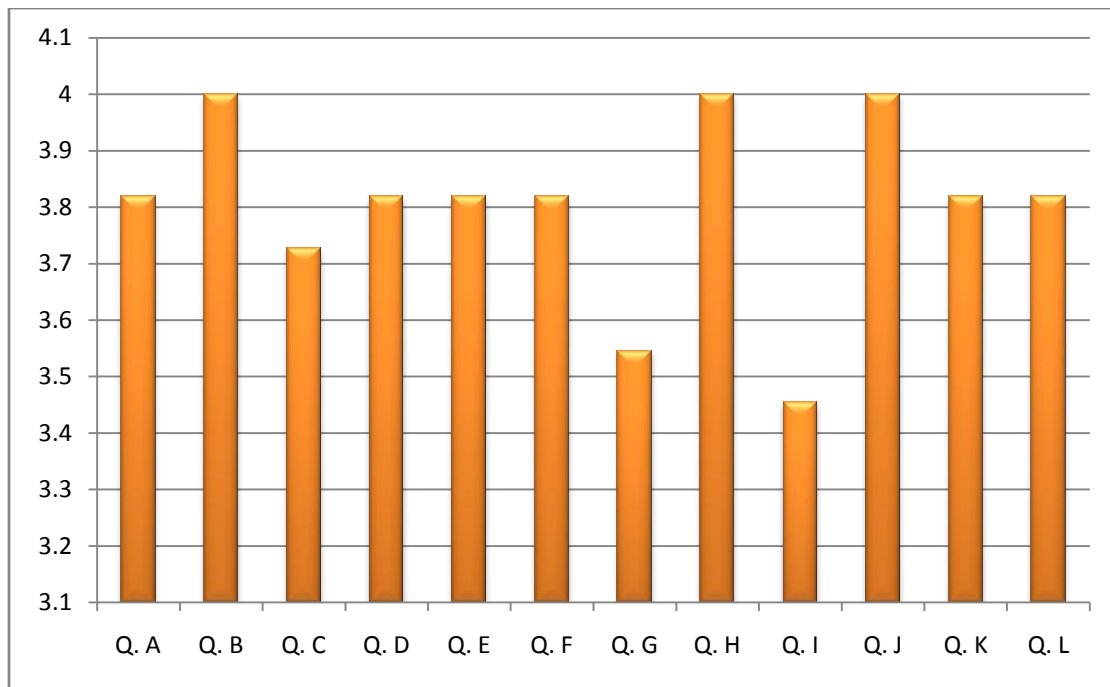


### Dept. of Physics

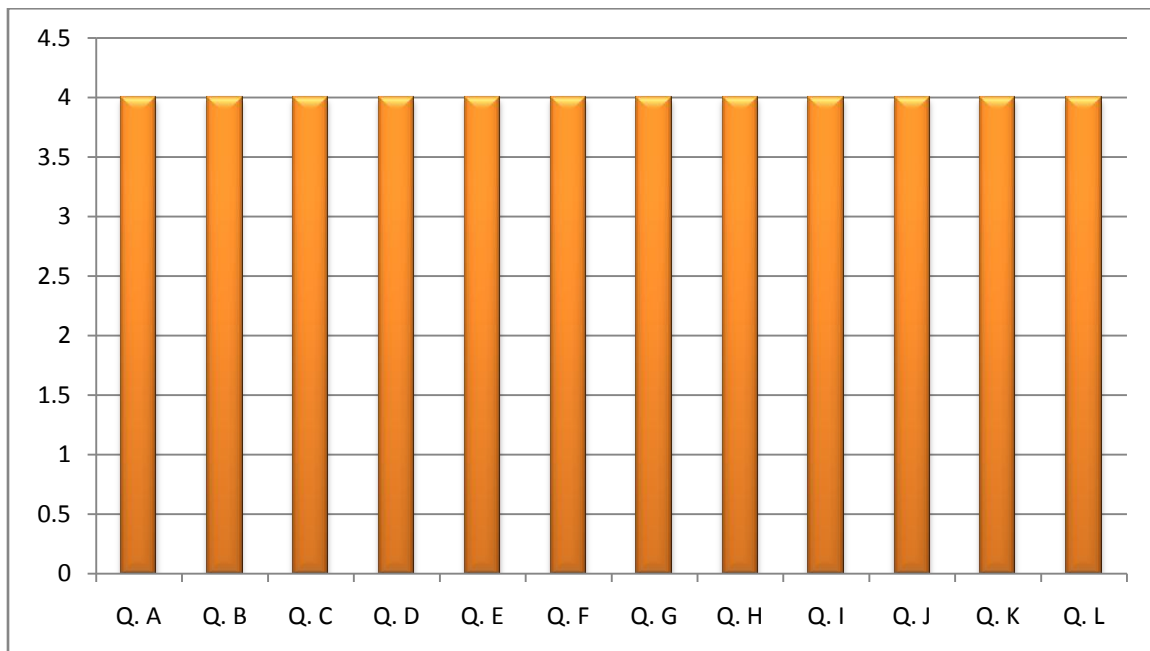




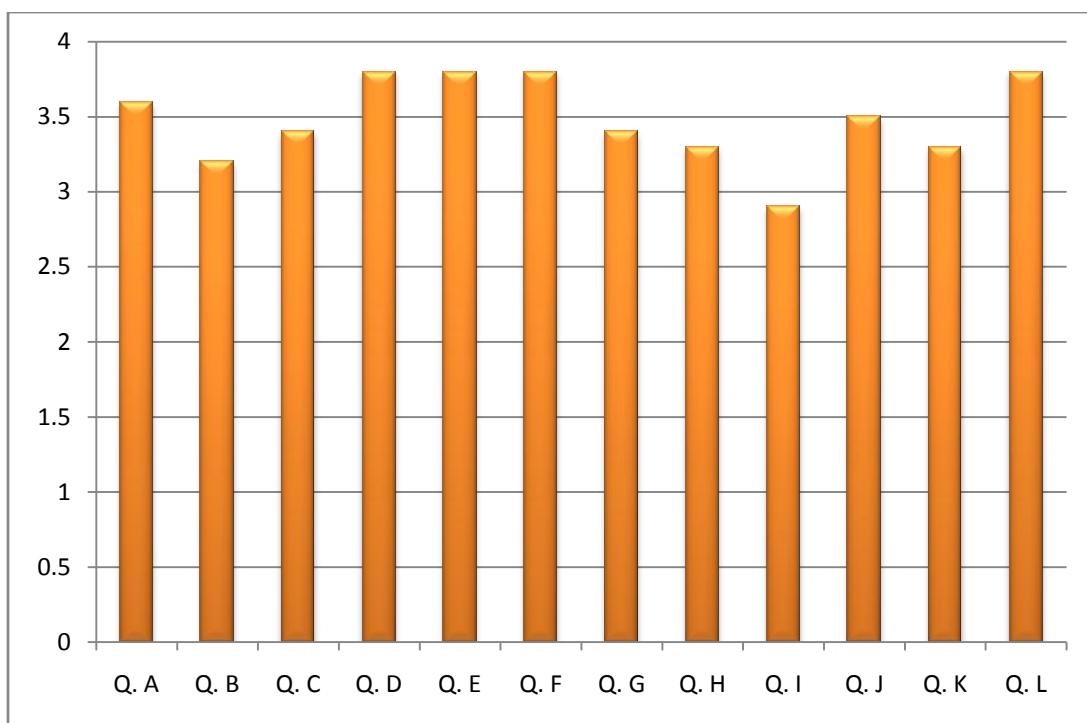
### Dept. of Political Science



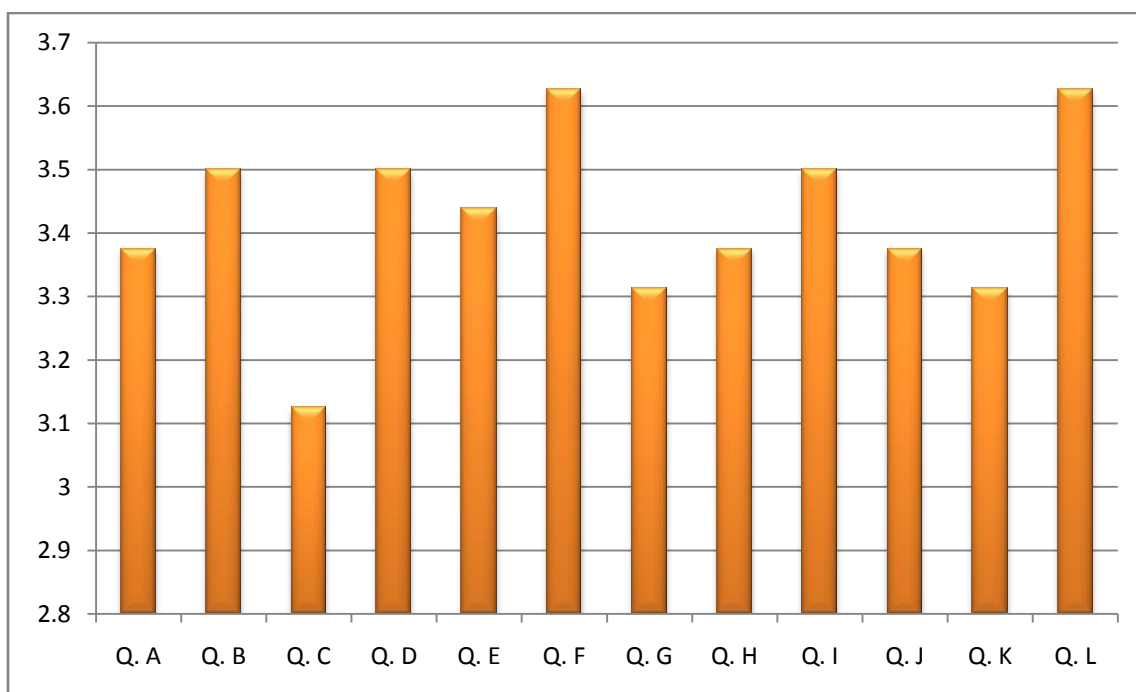
### Dept. of Psychology



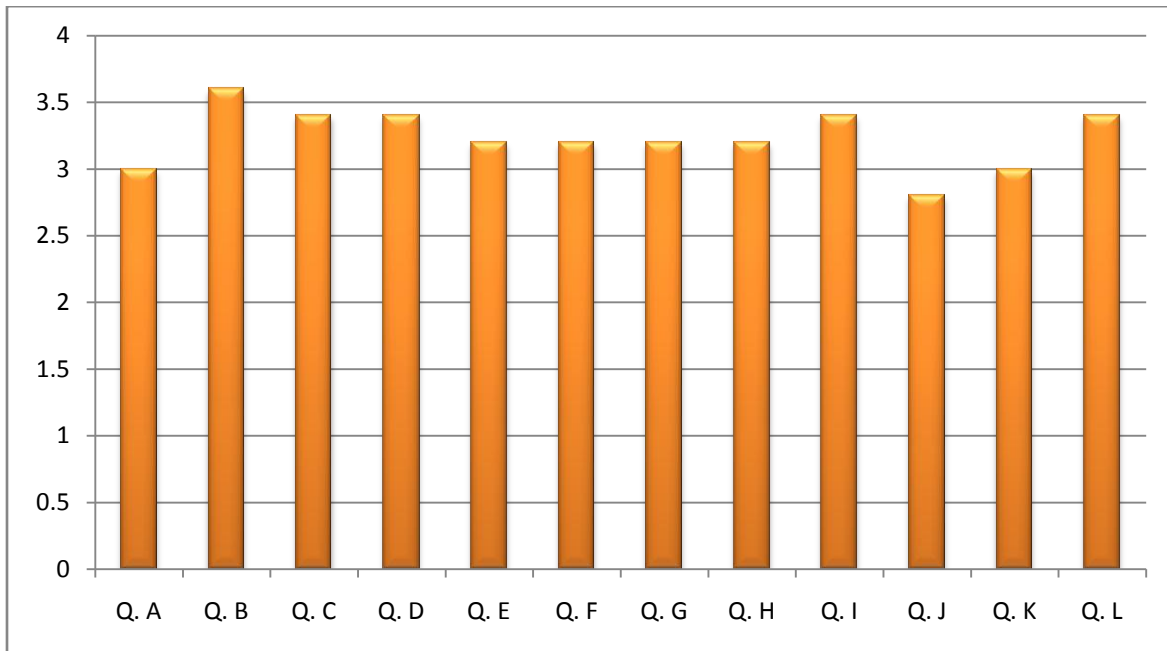
### Dept. of Sanskrit



### Dept. of Urdu



### Dept. of Zoology



## **Analysis of Students' Feedback, 2021**

Q. A - Content and phrasing of the syllabus clear and concise.

Q. B - The learning materials like lectures, readings, videos, extension activities etc. practiced in your college pertain to the syllabus.

Q. C - The library, laboratory, electronic audio-visual resources, project and field-trips are adequate to deal with the curriculum.

Q. D - The syllabus designed is completed within the stipulated time.

Q. E - Teachers help you to identify your strengths and provide adequate guidance regarding your future prospects.

Q. F - Teachers are approachable and friendly beyond classroom teaching.

Q. G - The syllabus facilitate multi-disciplinary learning.

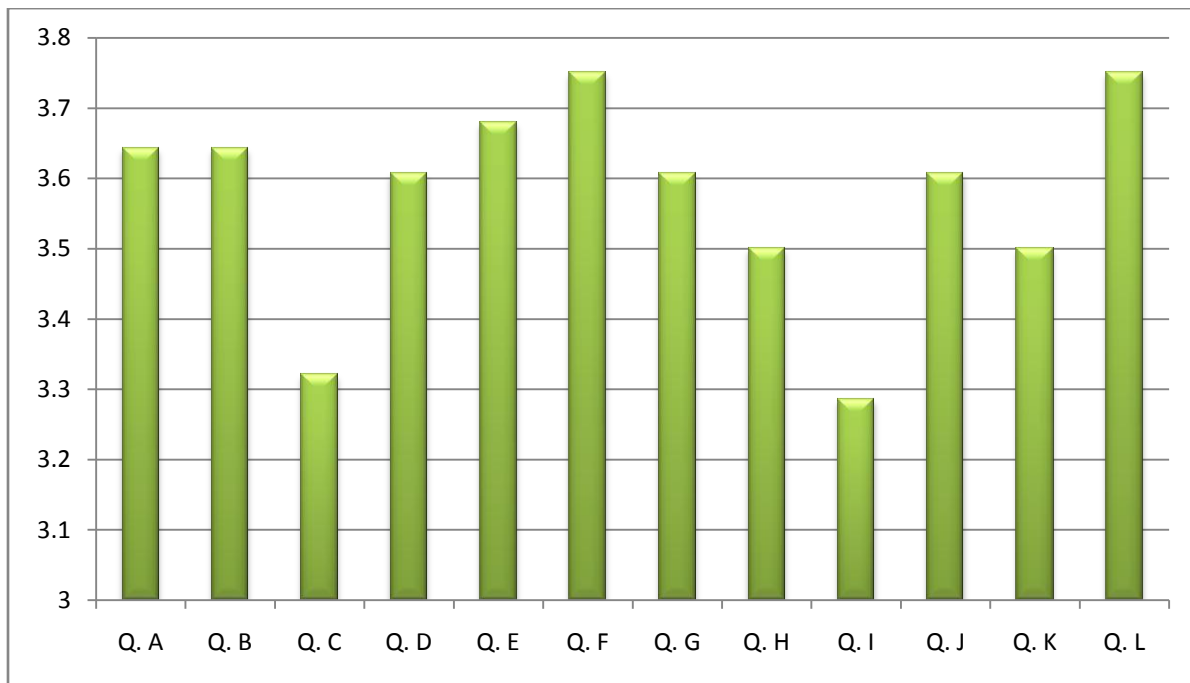
Q. H - The course facilitate development of intellectual skills like critical or creative thinking, problem-solving, quantitative reasoning etc.

Q. I - The course facilitate development of professional skills like written and oral communication, computer literacy, teamwork etc.

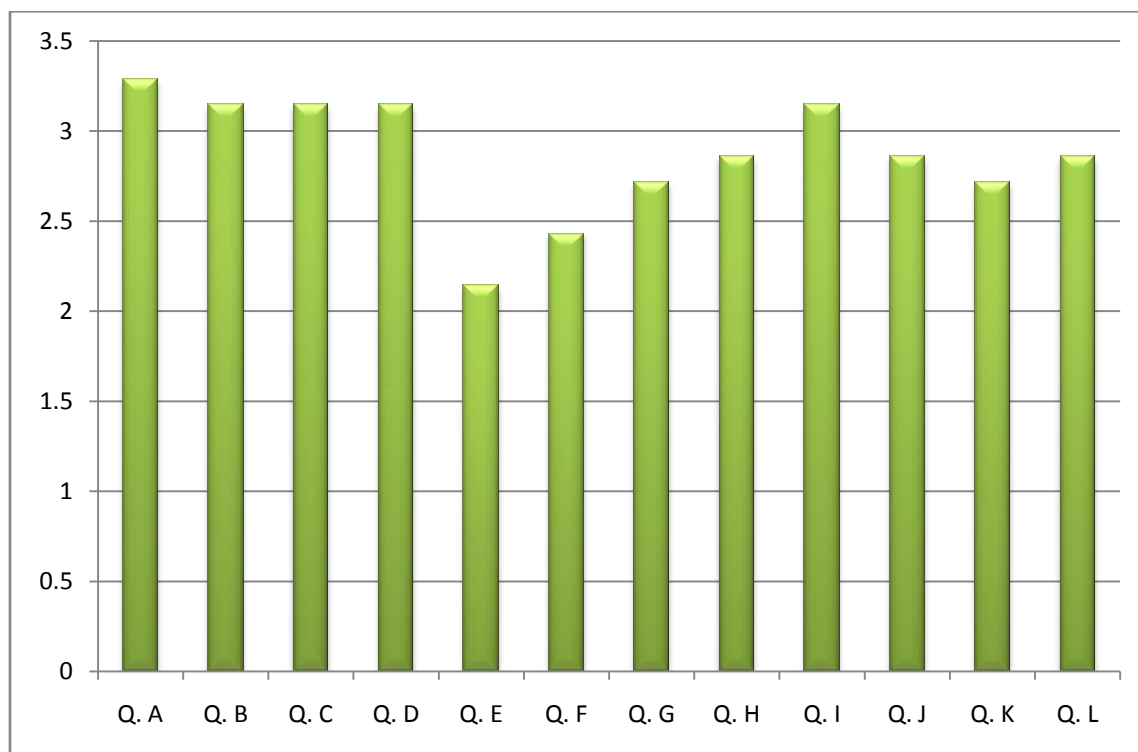
Q. J - The course enhances your social responsibility.

Q. K - The syllabus includes issues of contemporary relevance.

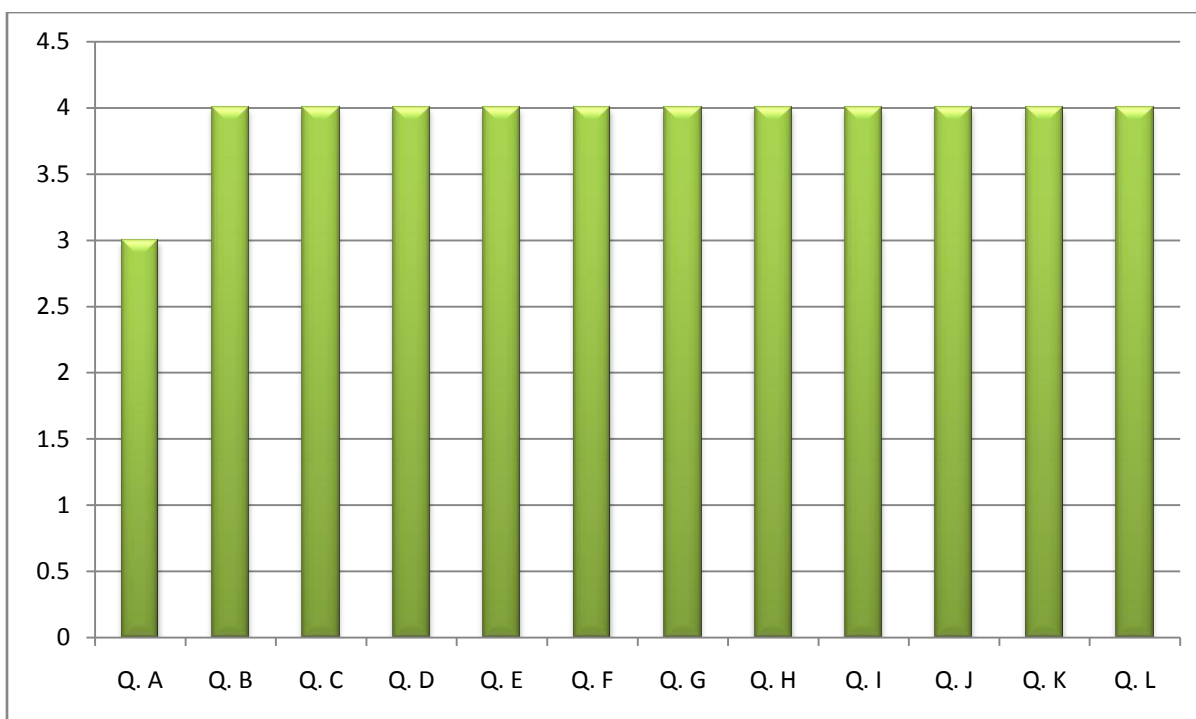
### Dept. of Bengali



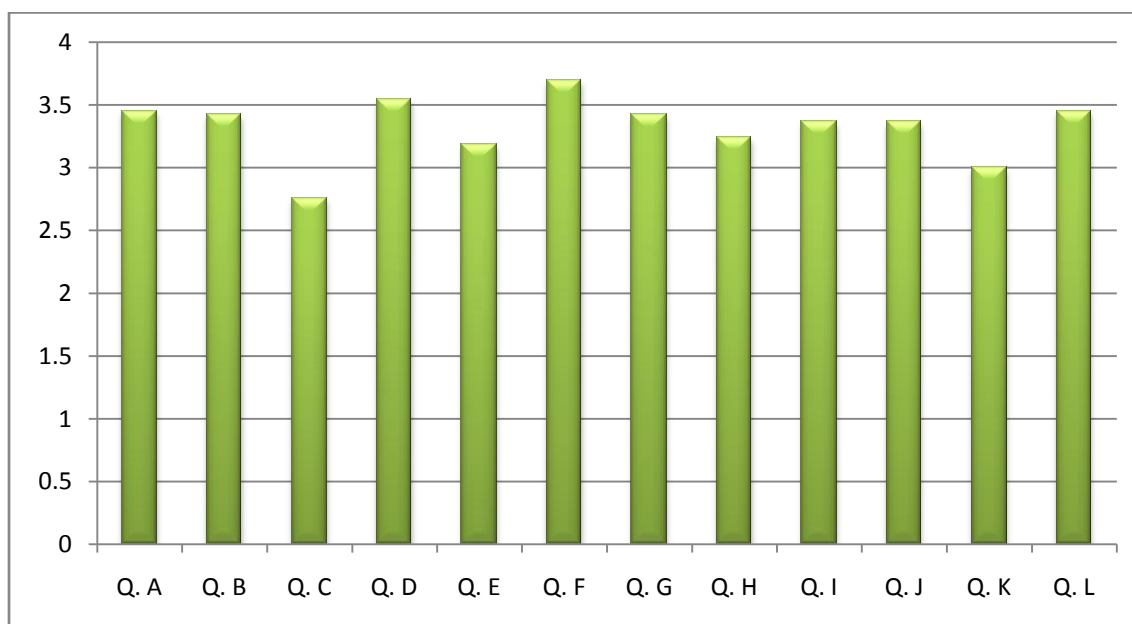
### Dept. of Botany



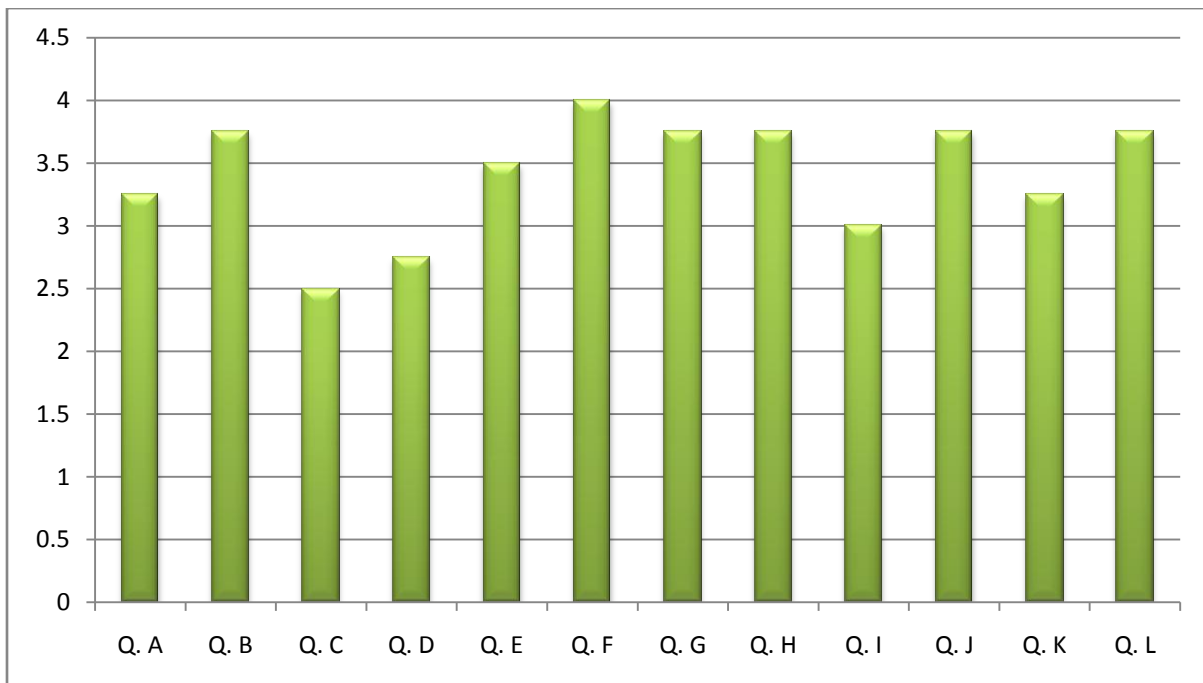
### Dept. of Chemistry



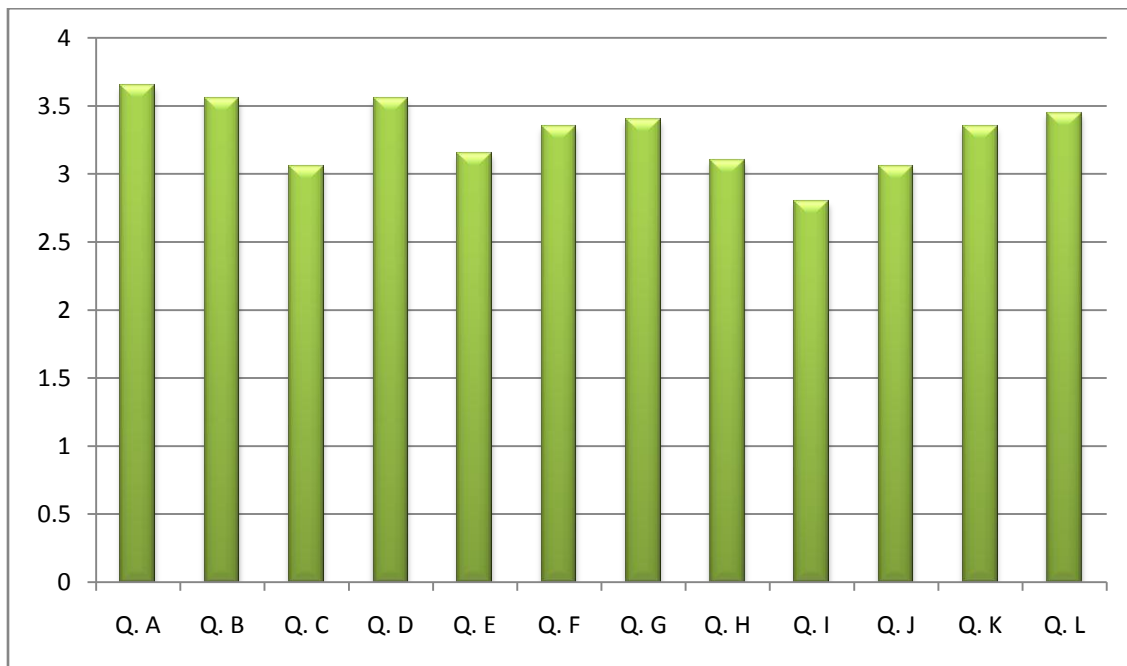
### Dept. of Commerce



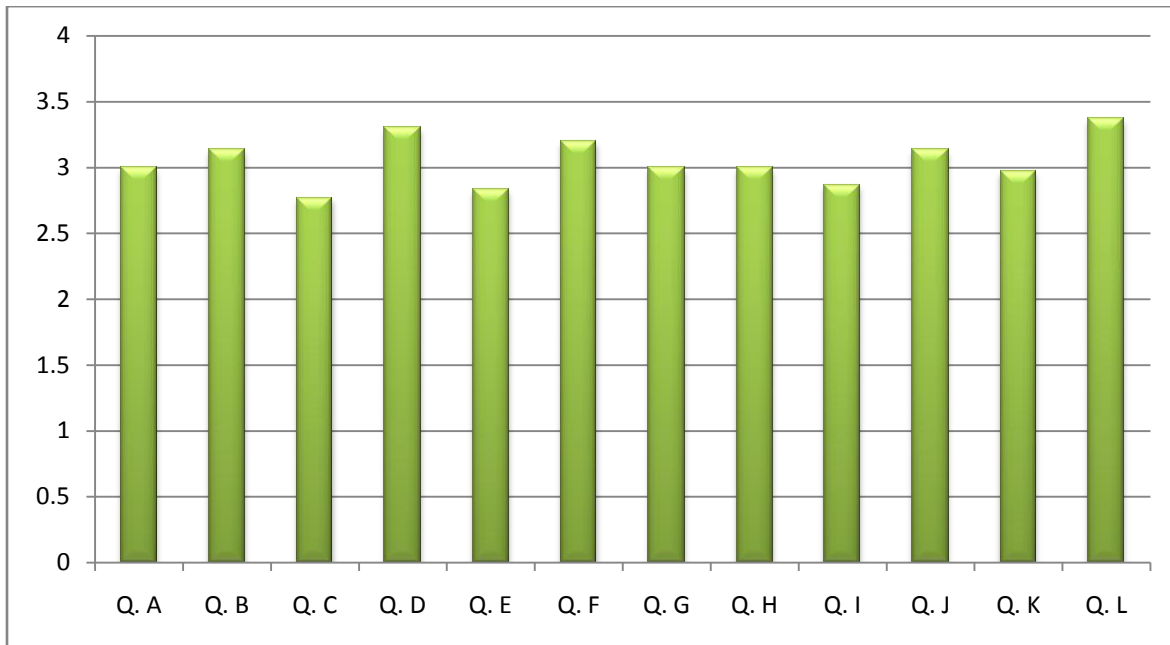
### Dept. of Economics



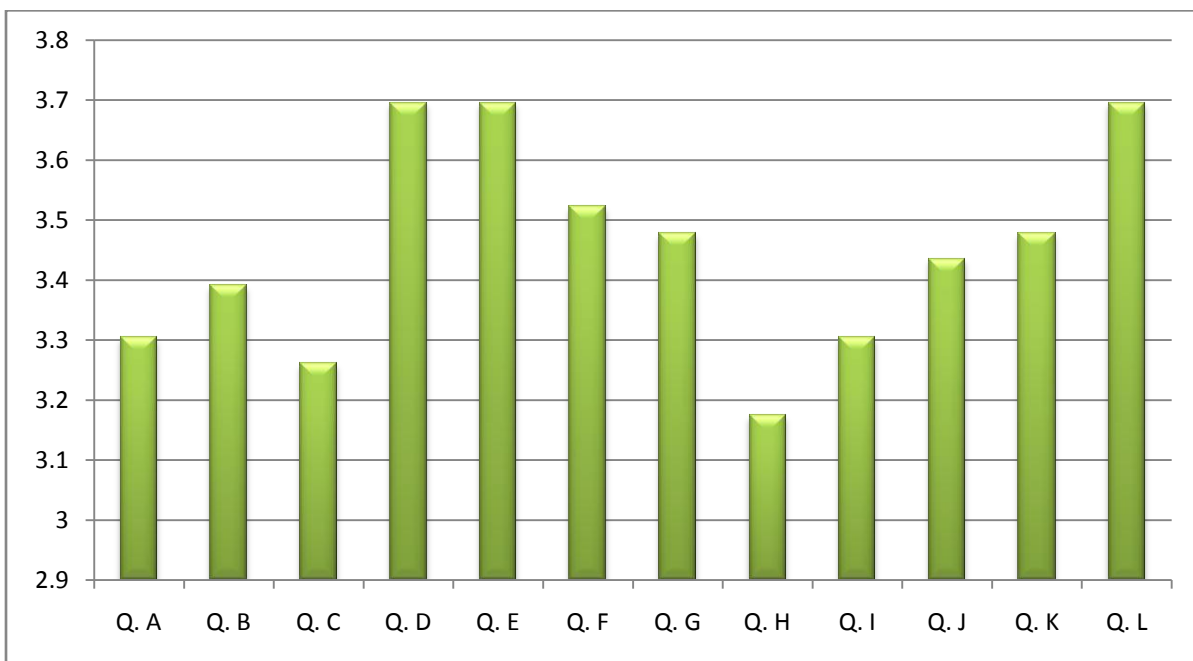
### Dept. of English



### Dept. of Geography

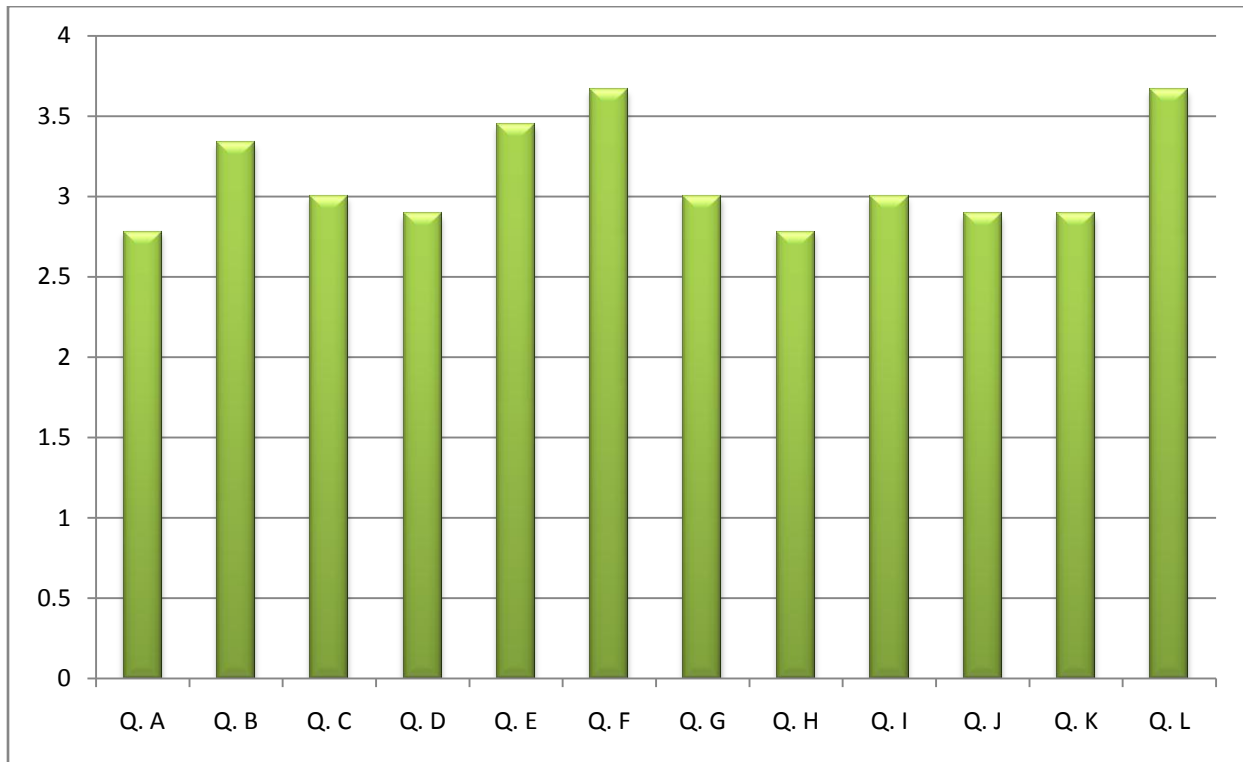


### Dept. of History

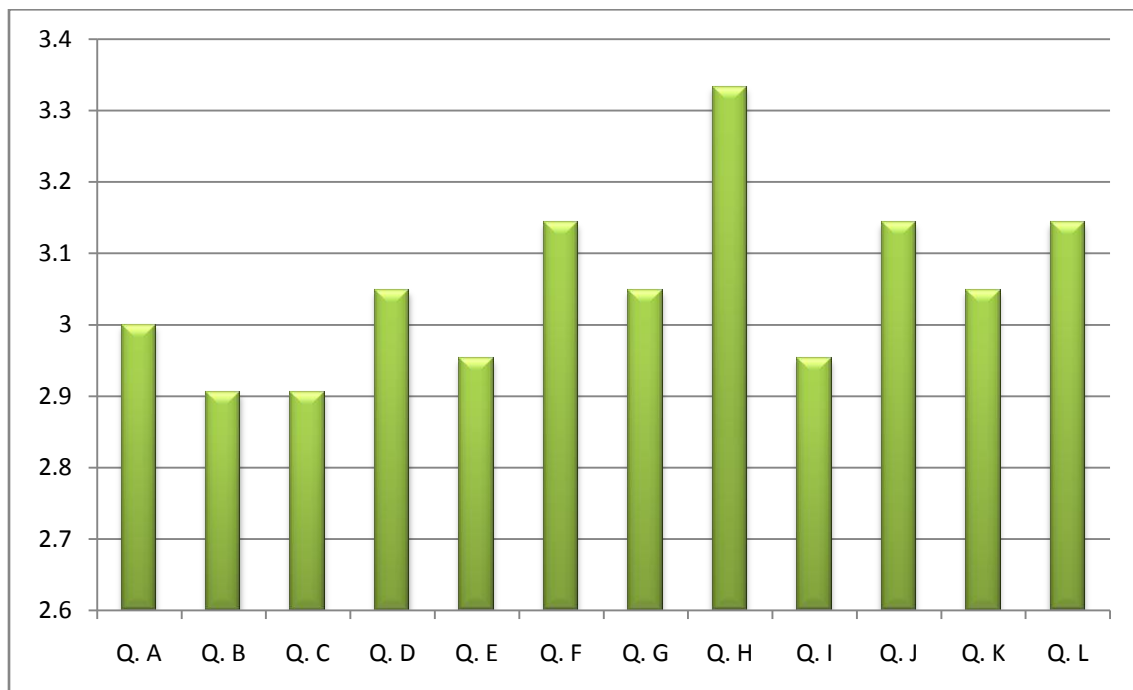




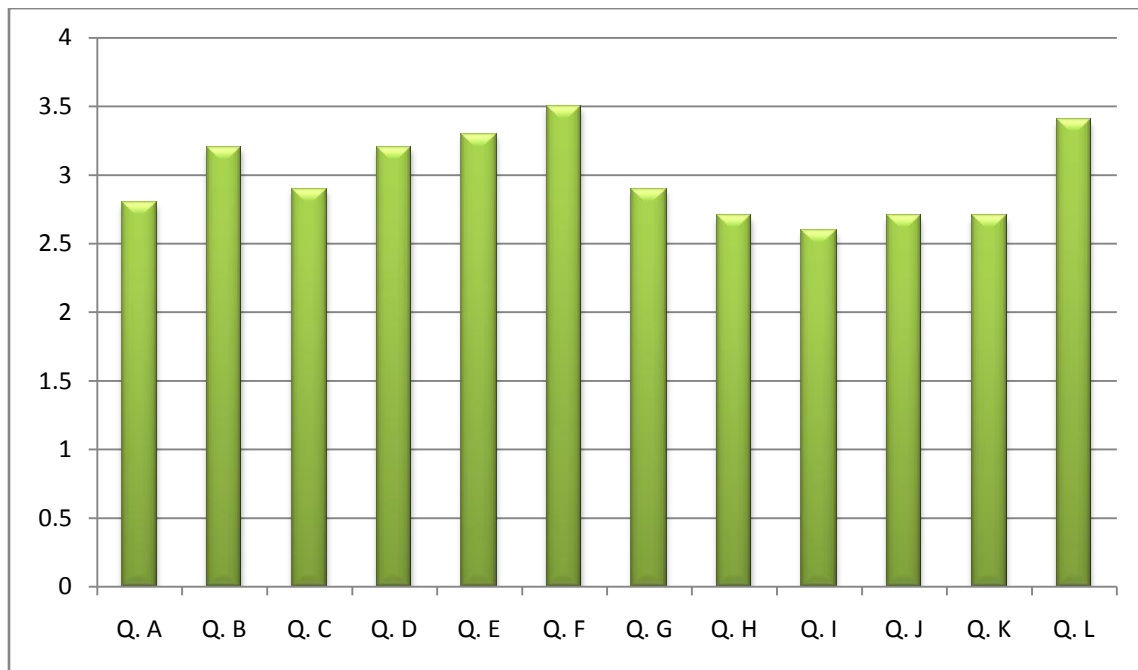
### Dept. of Mathematics



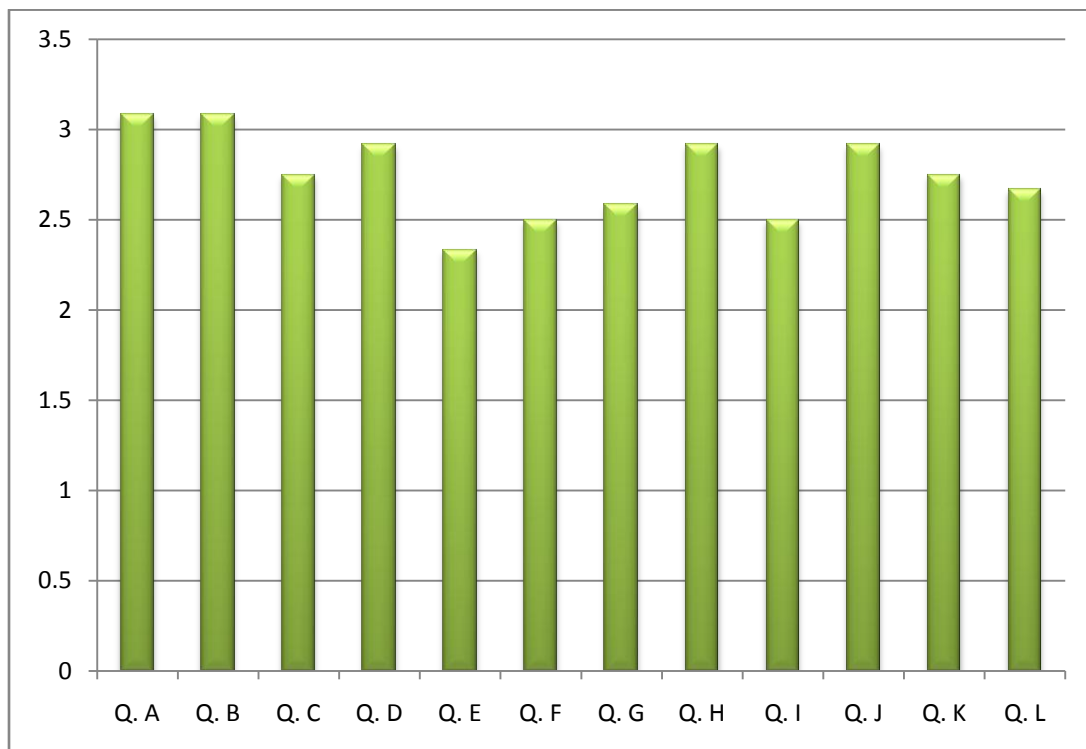
### Dept. of Philosophy



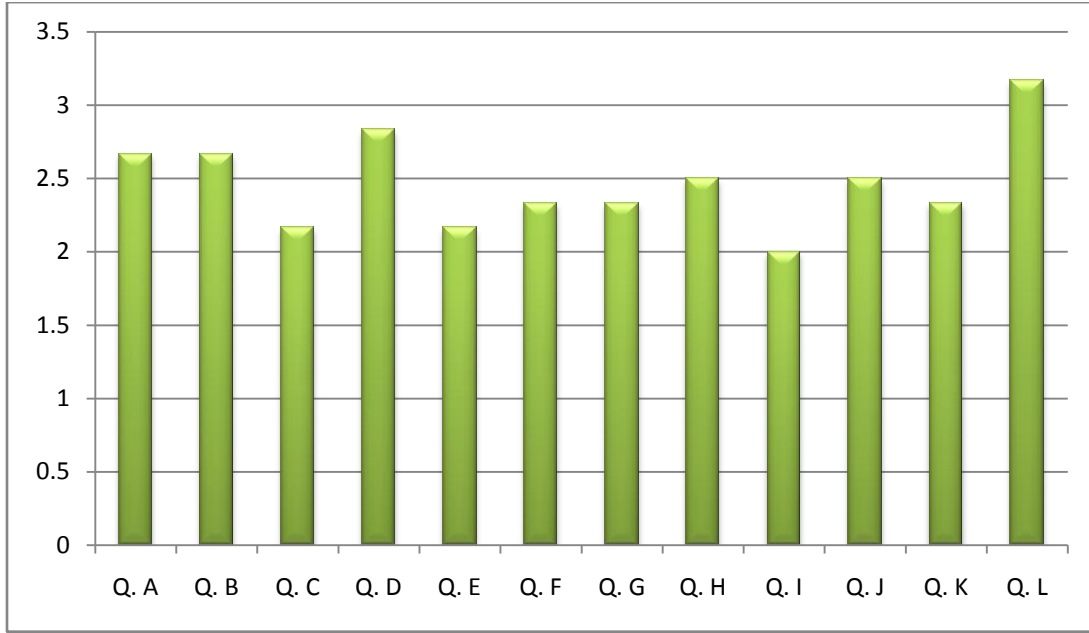
### Dept. of Physics



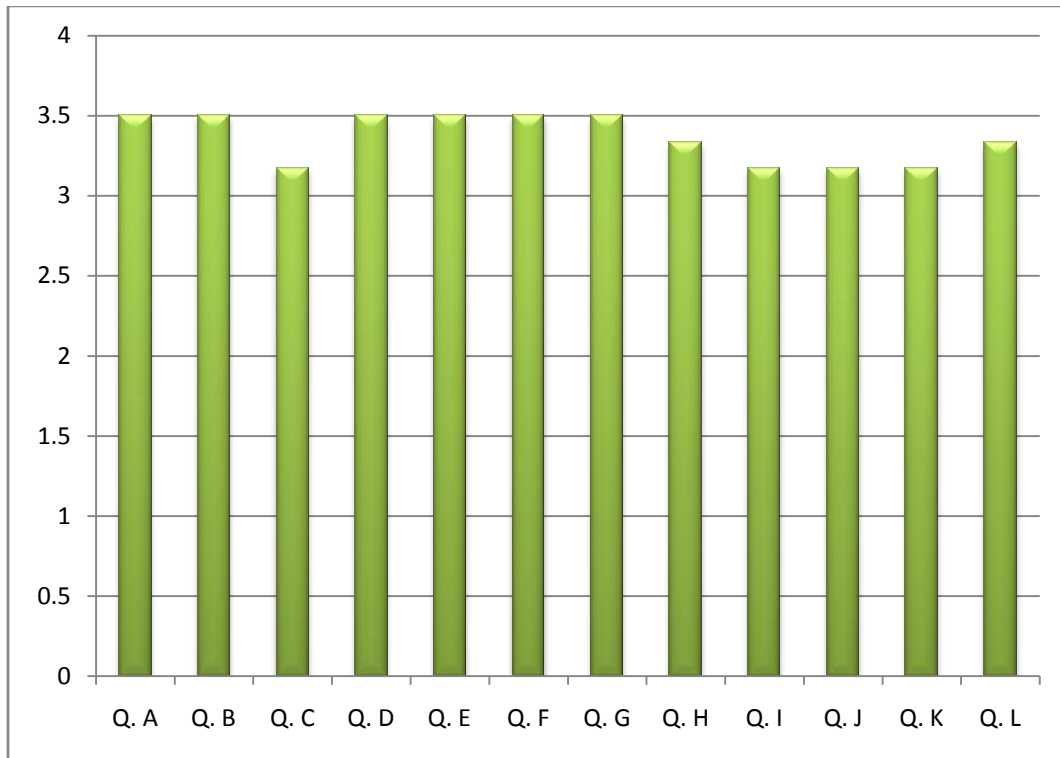
### Dept. of Political Science



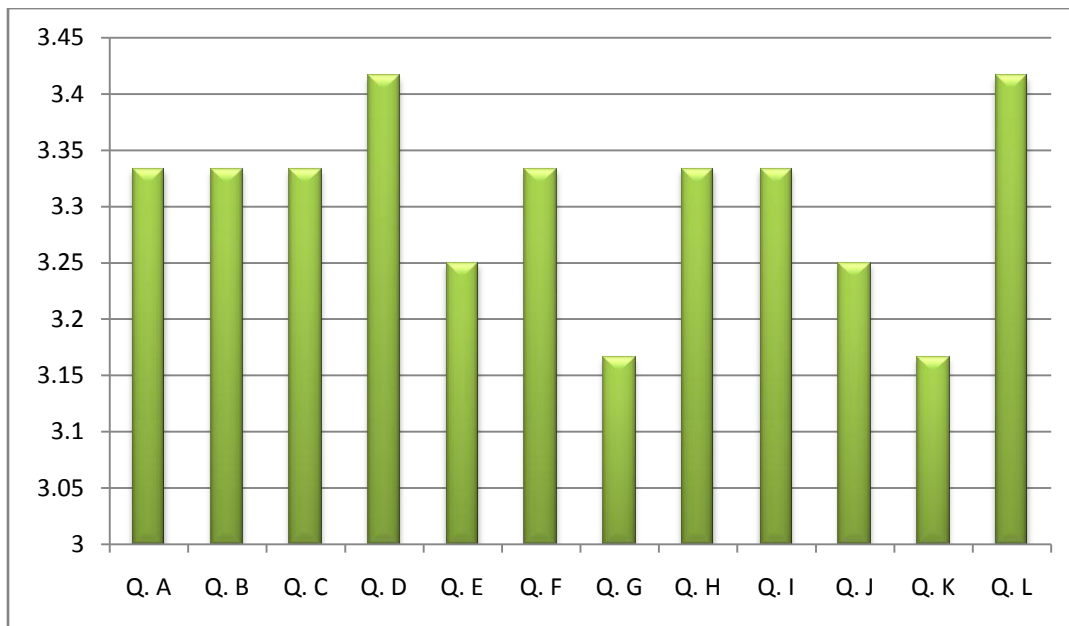
### Dept. of Psychology



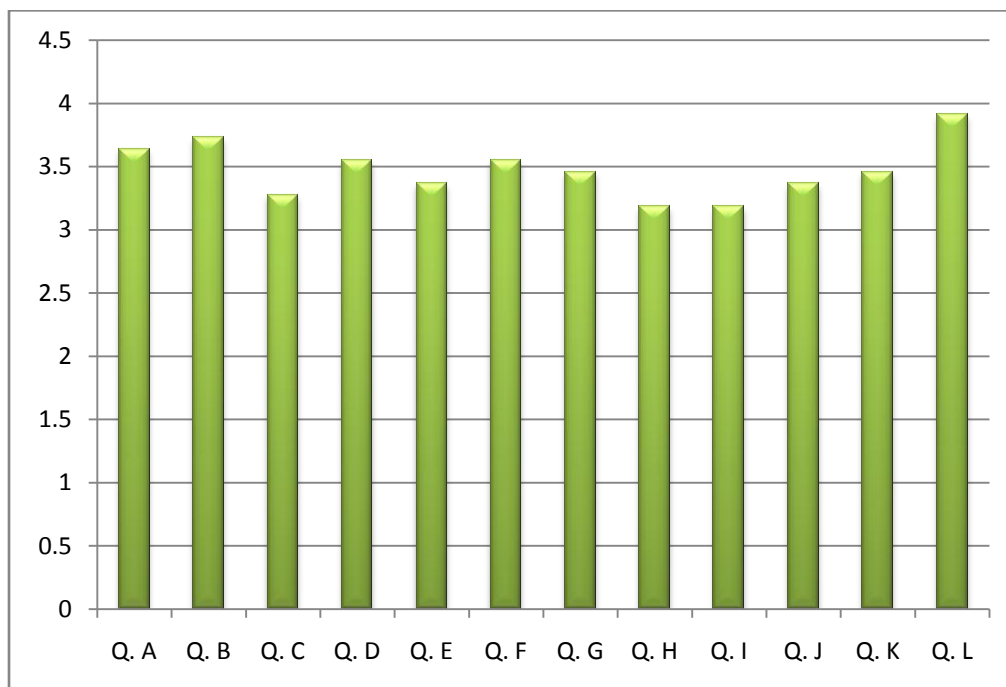
### Dept. of Sanskrit



### Dept. of Urdu



### Dept. of Zoology



## Analysis of Teachers' Feedback, 2020-21

**Q. A - The content and phrasing of the syllabus clear and concise.**

**Q. B - Time stipulated is adequate to complete the syllabus**

**Q. C - Syllabus incorporates adequate practical/ field trips/project work**

**Q. D - Audio-visual mode and extension activities are good methods for supplementing the lecture-mode.**

**Q. E - Lesson Plan helps structuring your method of teaching better**

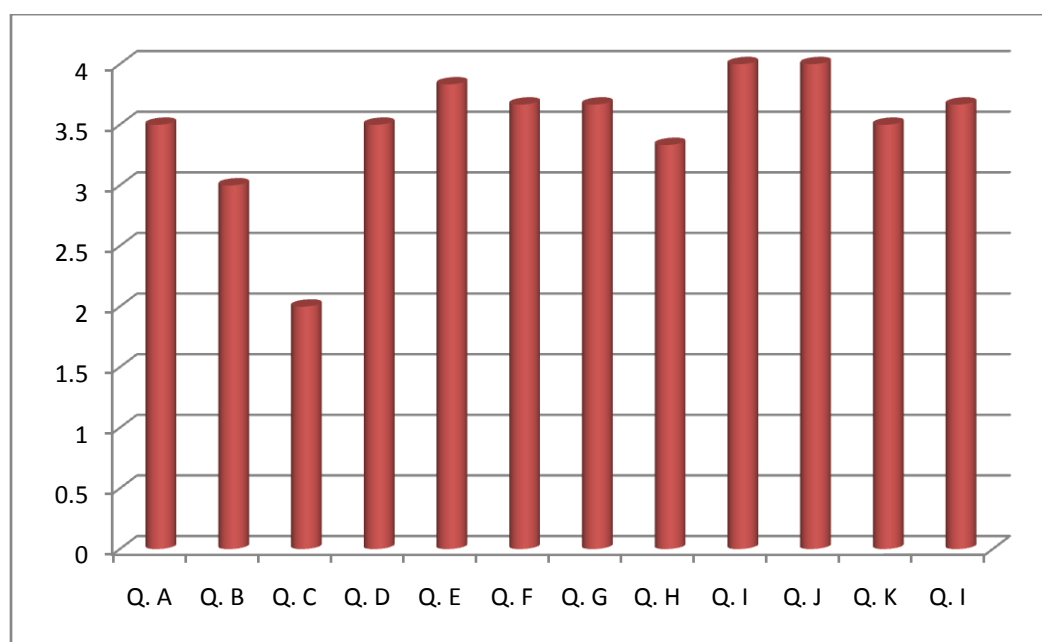
**Q. F - The syllabus gives a comprehensive idea about the discipline.**

**Q. G - The syllabus includes issues of contemporary relevance.**

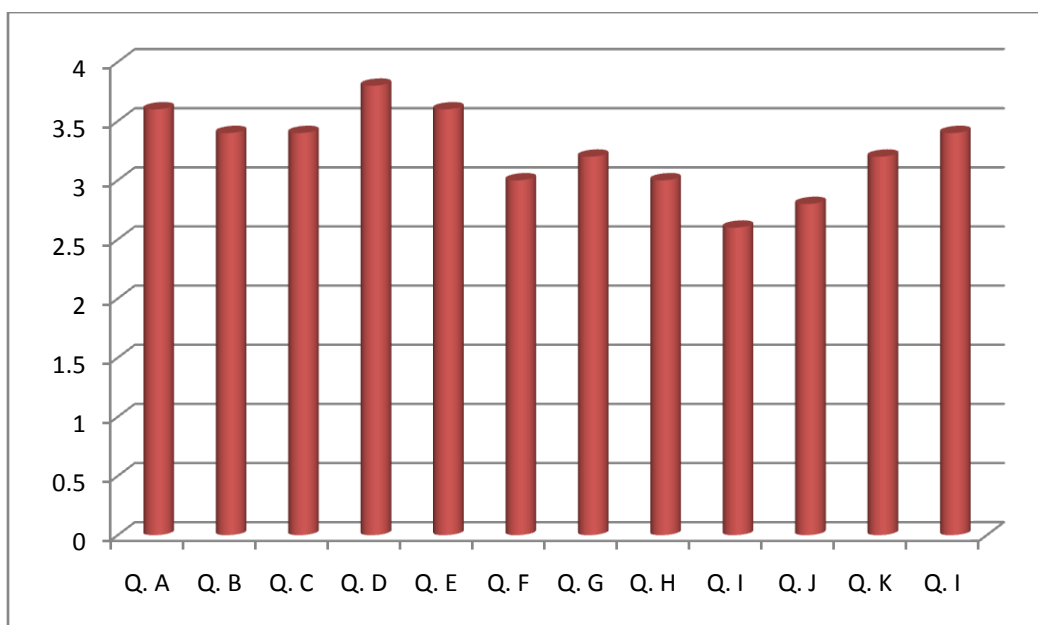
**Q. H - The scope to try innovative methods for better teaching-learning process.**

**Q. I - The number of teachers in the department is adequate to deal with the syllabus.**

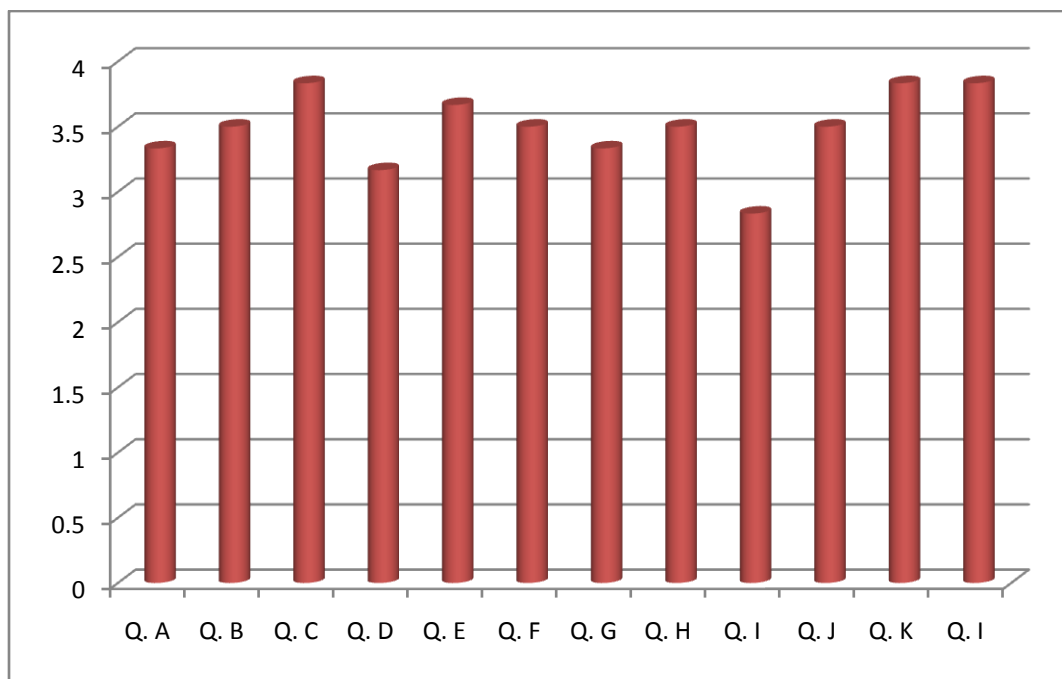
### Dept. of Bengali



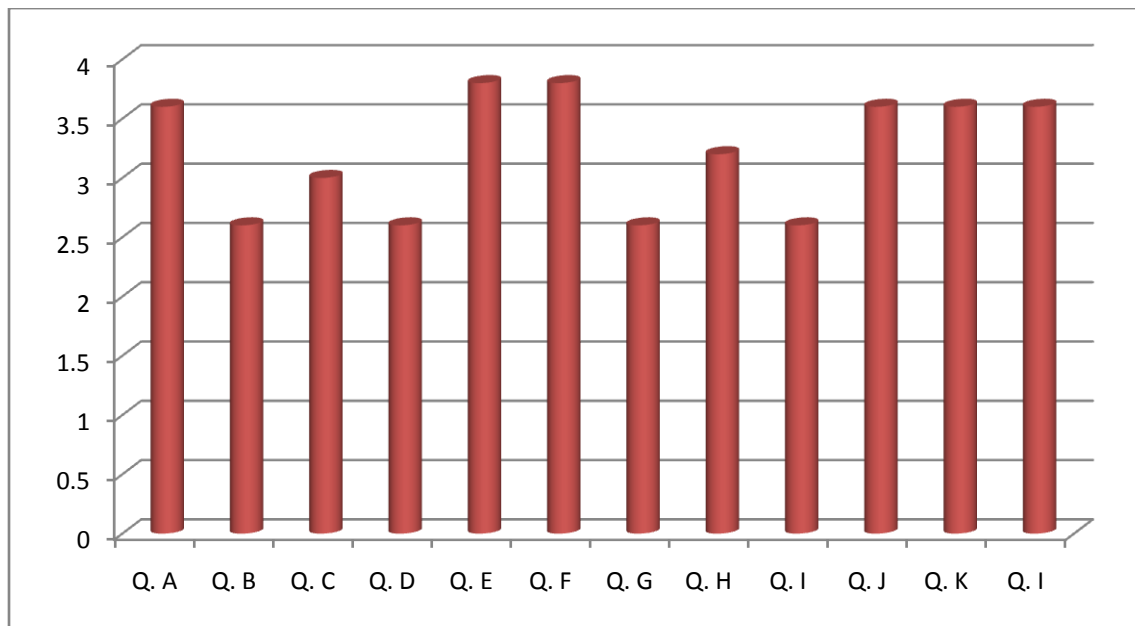
### Dept. of Botany



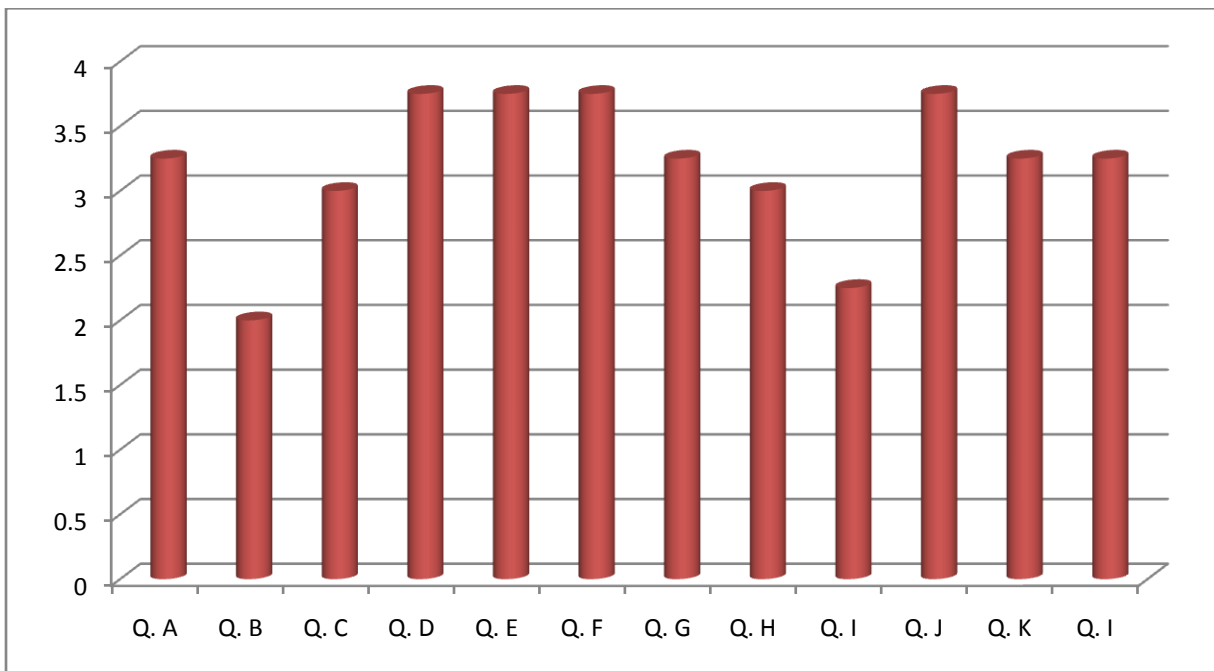
### Dept. of Chemistry



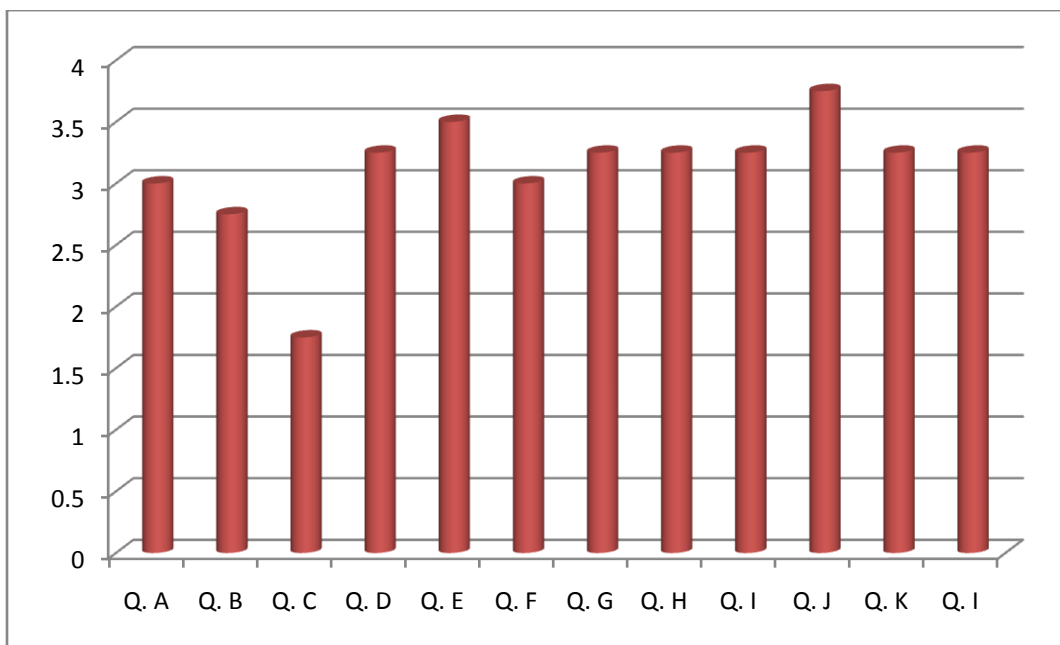
### Dept. of Commerce



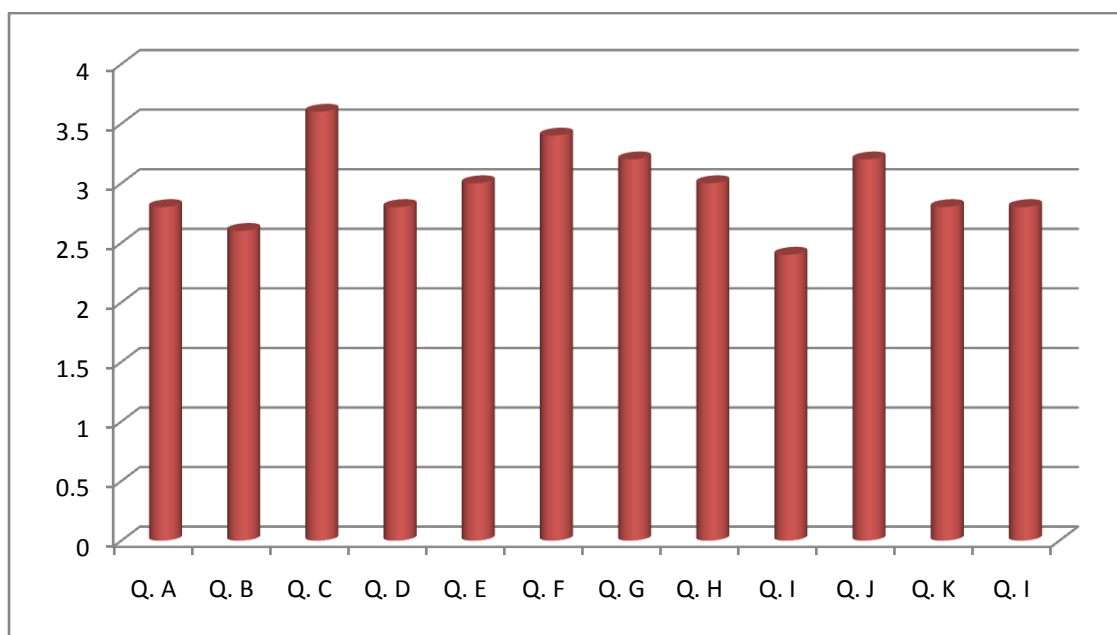
### Dept. of Economics



### Dept. of English

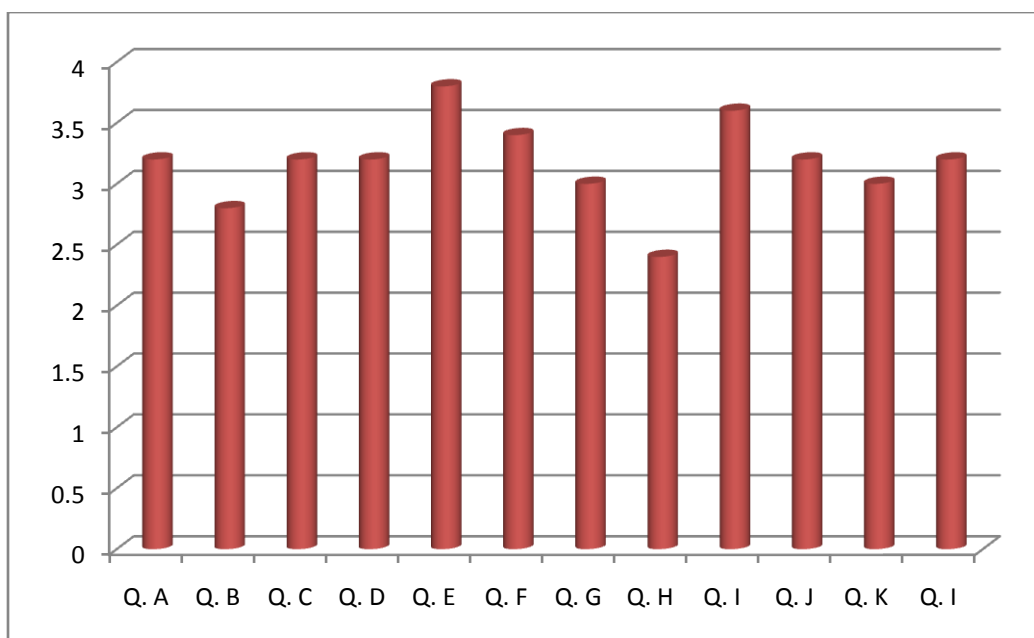


### Dept. of Geography

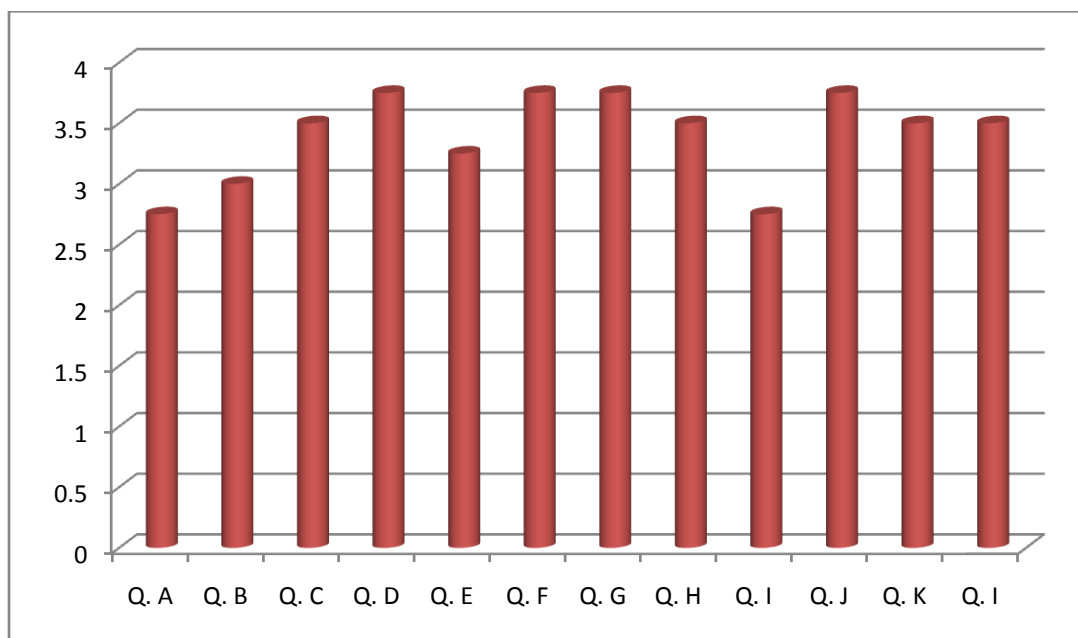




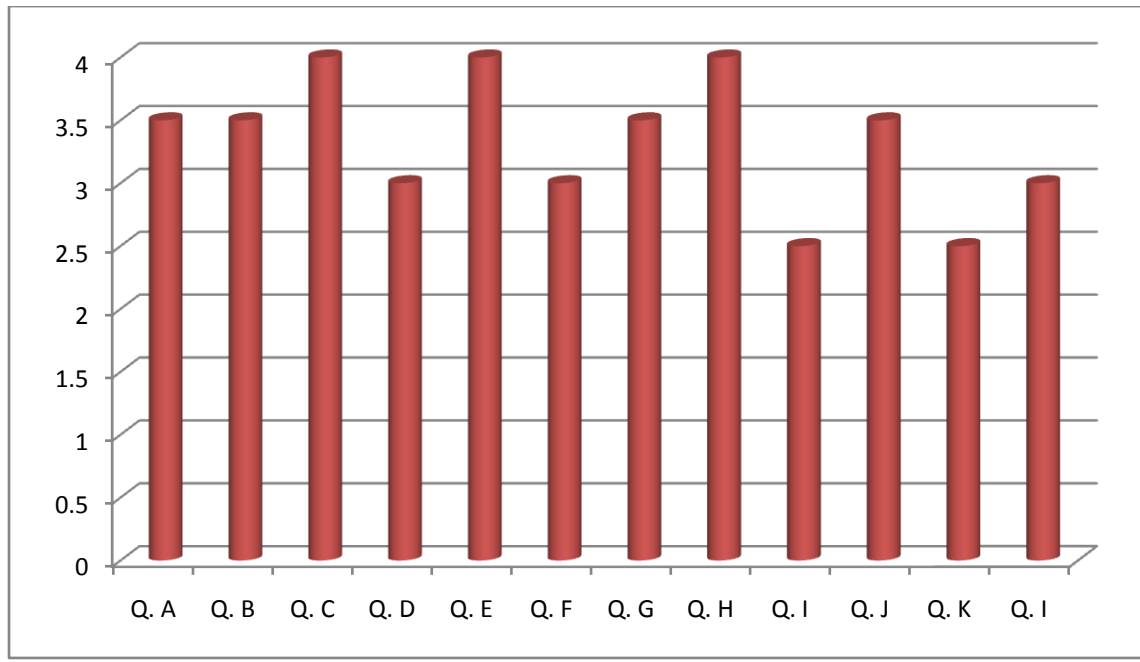
### Dept. of History



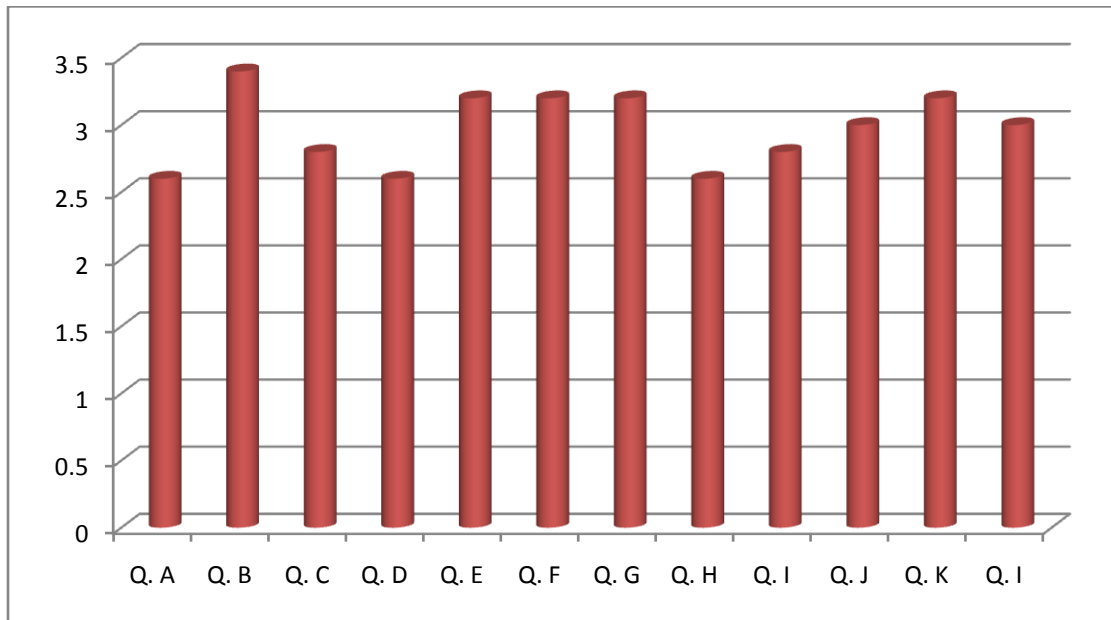
### Dept. of Mathematics



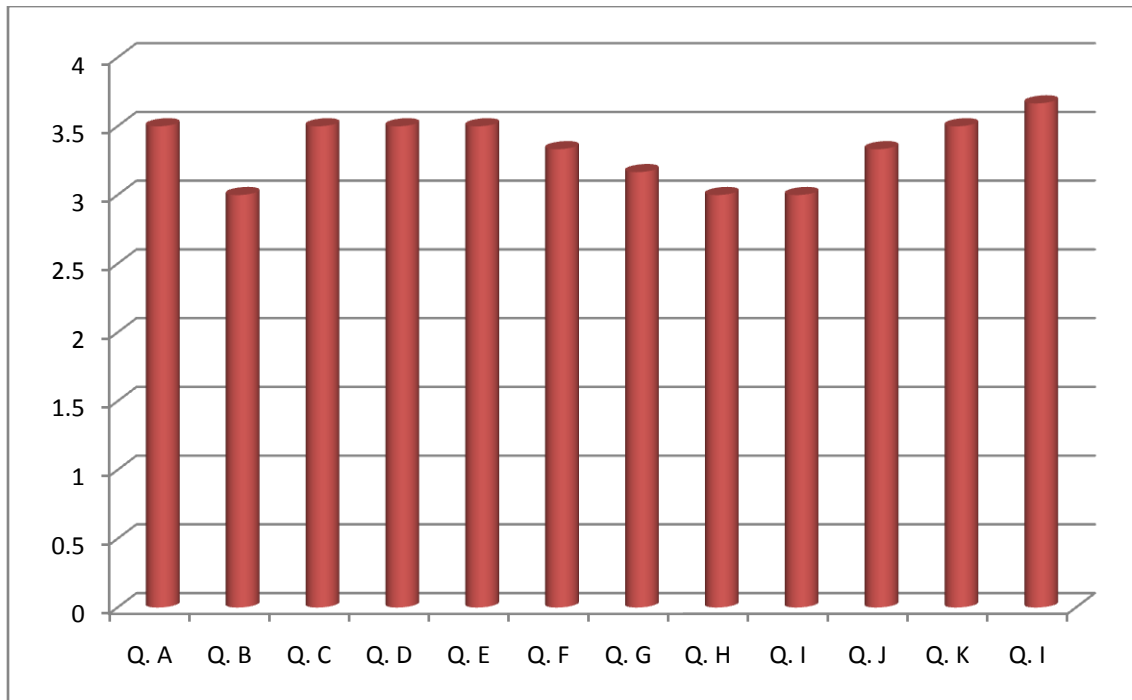
### Dept. of Mass Com and Journalism



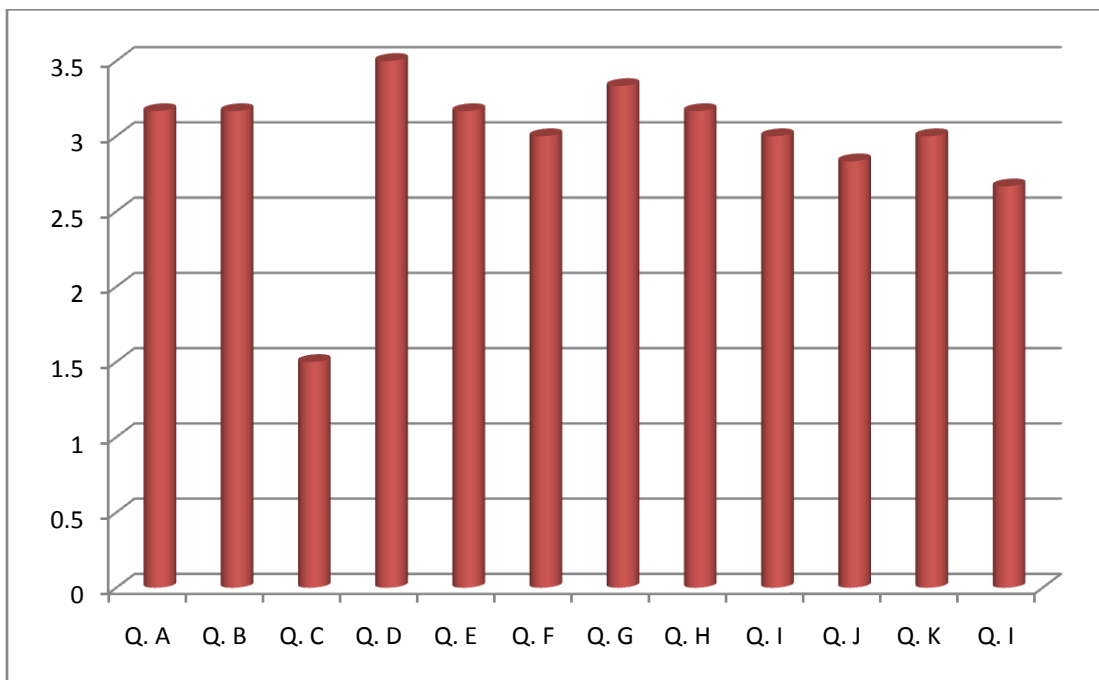
### Dept. of Philosophy



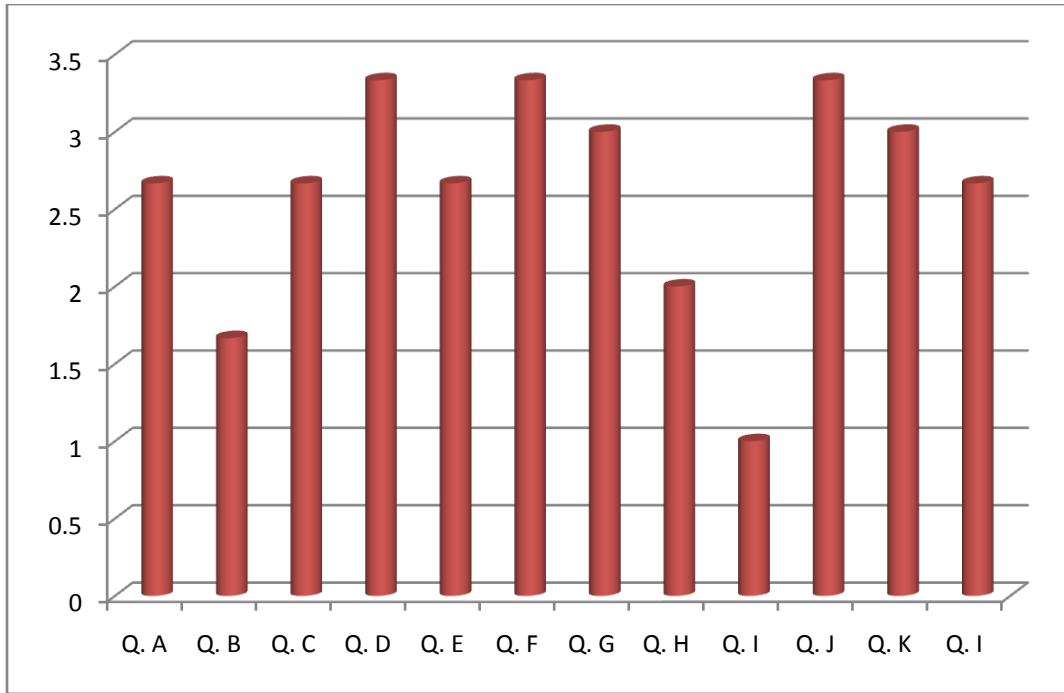
### Dept. of Physics



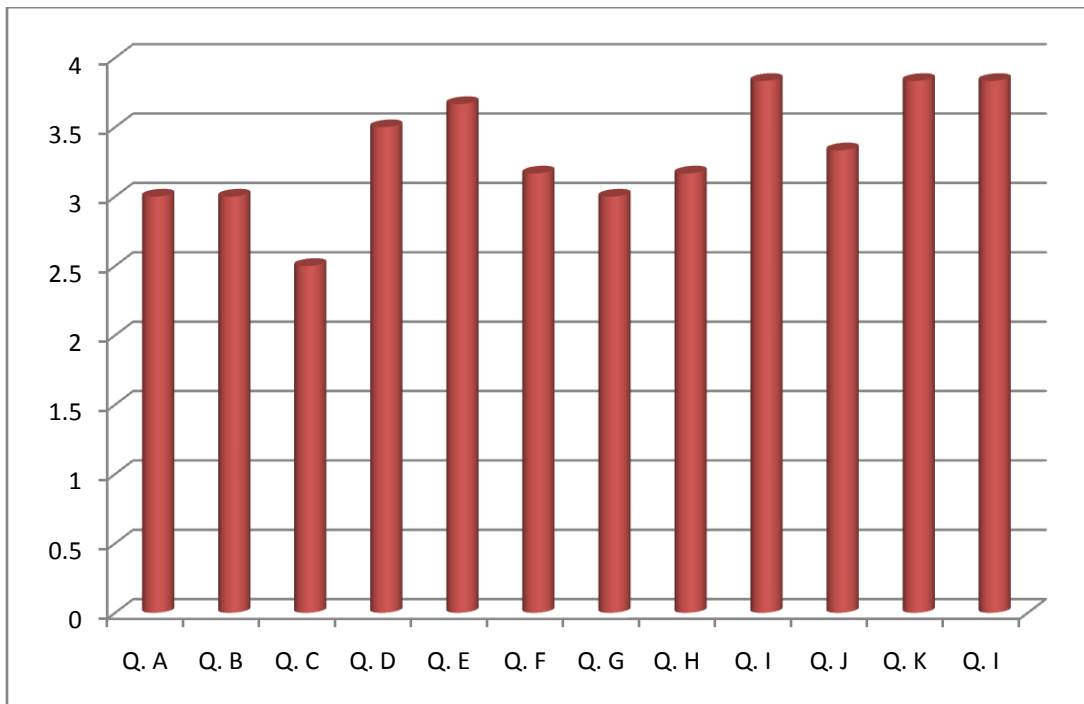
### Dept. of Political Science



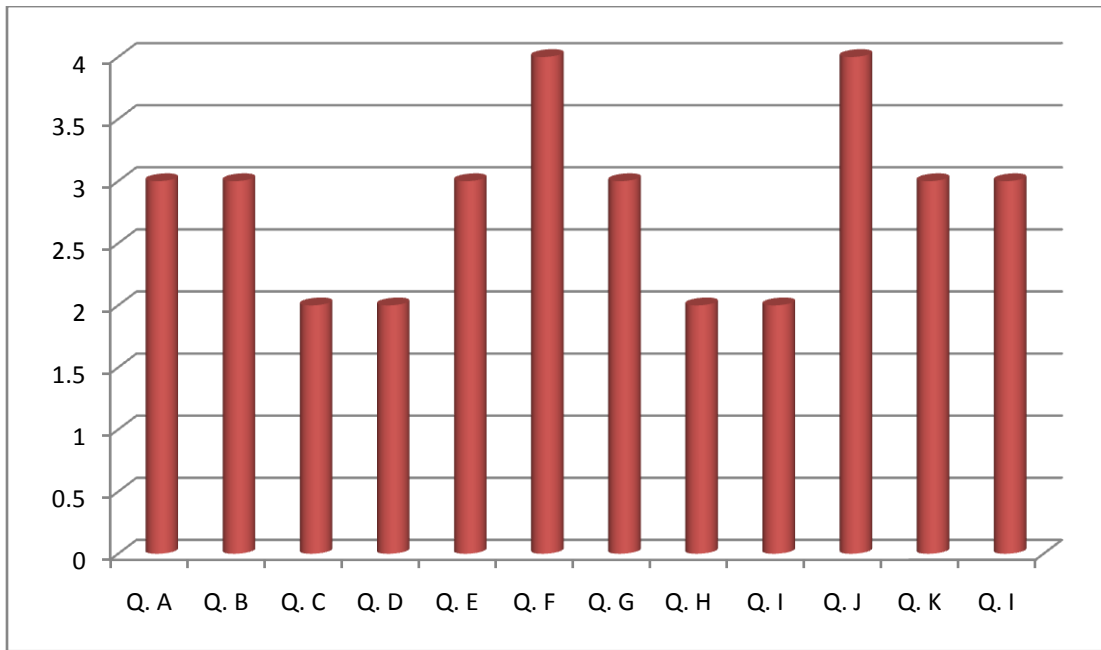
### Dept. of Psychology



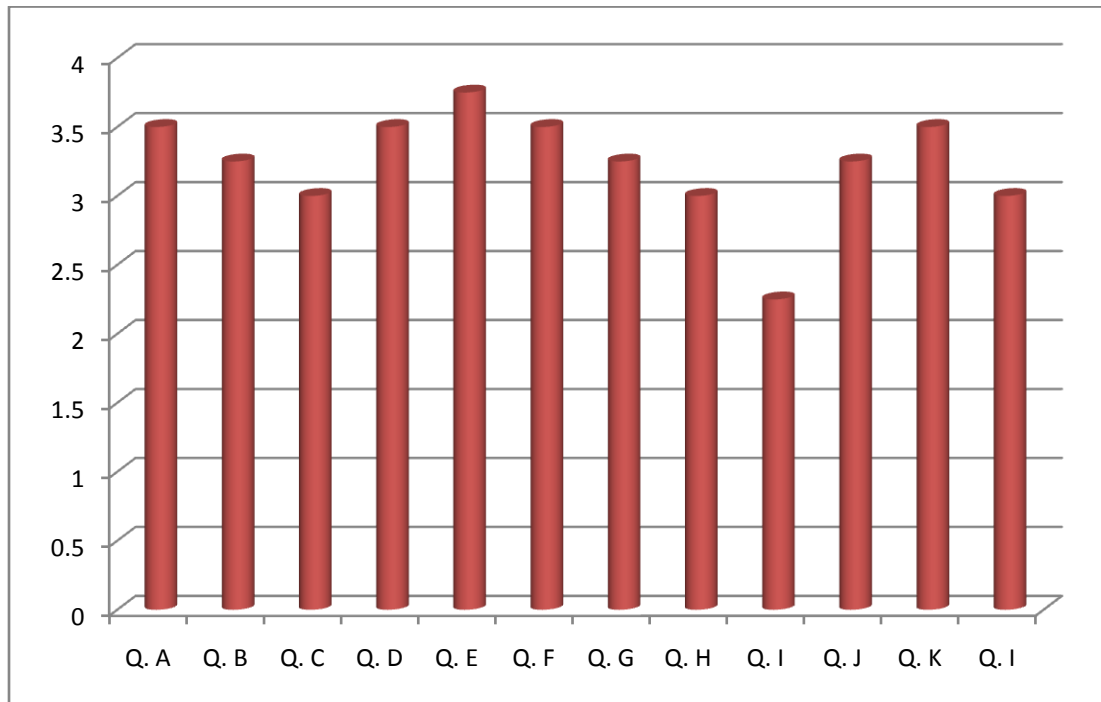
### Dept. of Sanskrit



### Dept. of Urdu



### Dept. of Zoology



## Analysis of Alumni Feedback, 2020-21

**Q. A - Adequate knowledge gained during your course of study.**

**Q. B - Knowledge gained in college is relevant in your present study/job.**

**Q. C - Faculty members were co-operative and approachable for academic support.**

**Q. D - Curriculum facilitate placement opportunities on campus/off-campus.**

**Q. E - Career counseling and guidance for higher studies.**

**Q. F - Getting regular updates about activities and development from college.**

**Q. G - Adequate extension activities to support the syllabus.**

**Q. H - Adequate infra-structural facilities.**

**Q. I - Role of college in instilling confidence.**

**Q. J - Overall rating of the course and its transaction.**

