

INDEX

Feedback Analysis on the Syllabus and Its Transaction at the Institution from Its Stakeholders

1. Students 2022	Page 2-12
2. Teachers	Page 13-22
3. Alumni	Page 23

Analysis of Students' Feedback, 2022

Q. A - Content and phrasing of the syllabus clear and concise.

Q. B - The learning materials like lectures, readings, videos, extension activities etc. practiced in your college pertain to the syllabus.

Q. C - The library, laboratory, electronic audio-visual resources, project and field-trips are adequate to deal with the curriculum.

Q. D - The syllabus designed is completed within the stipulated time.

Q. E - Teachers help you to identify your strengths and provide adequate guidance regarding your future prospects.

Q. F - Teachers are approachable and friendly beyond classroom teaching.

Q. G - The syllabus facilitate multi-disciplinary learning.

Q. H - The course facilitate development of intellectual skills like critical or creative thinking, problem-solving, quantitative reasoning etc.

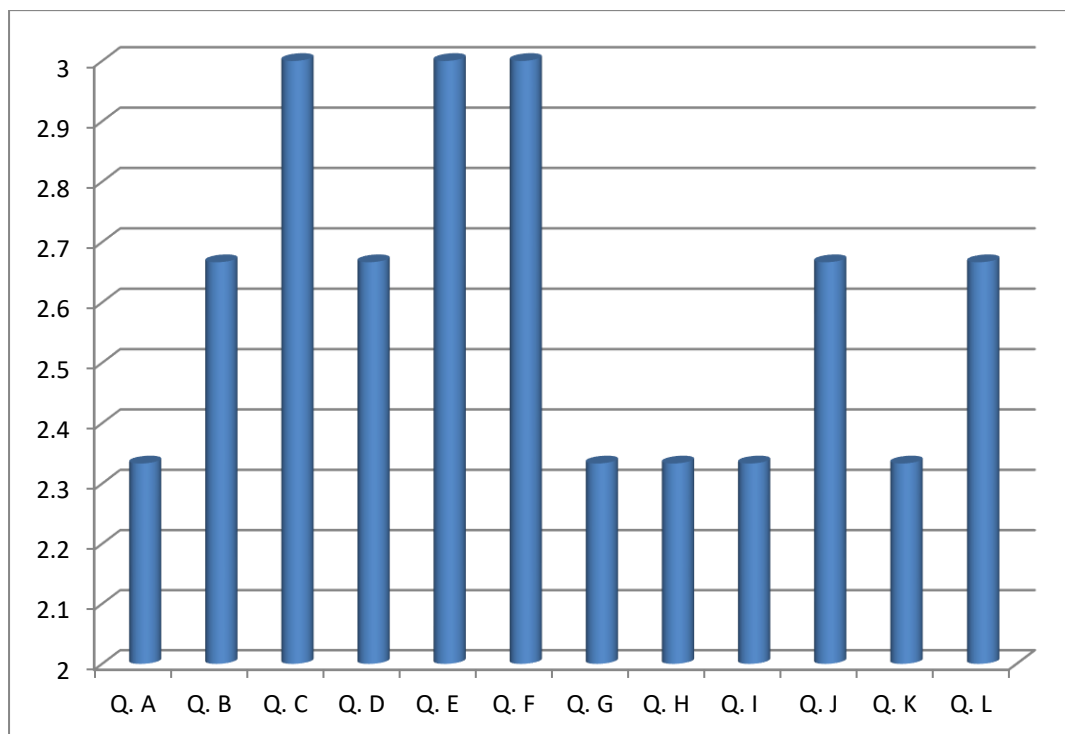
Q. I - The course facilitate development of professional skills like written and oral communication, computer literacy, teamwork etc.

Q. J - The course enhances your social responsibility.

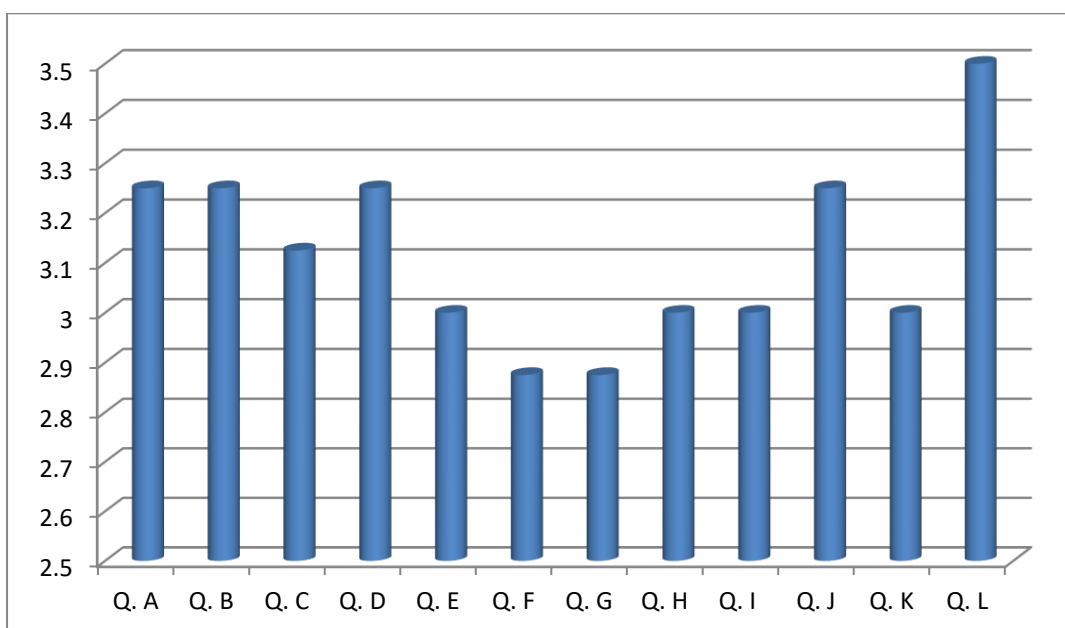
Q. K - The syllabus includes issues of contemporary relevance.

Q. L - There are opportunities for active participation in class.

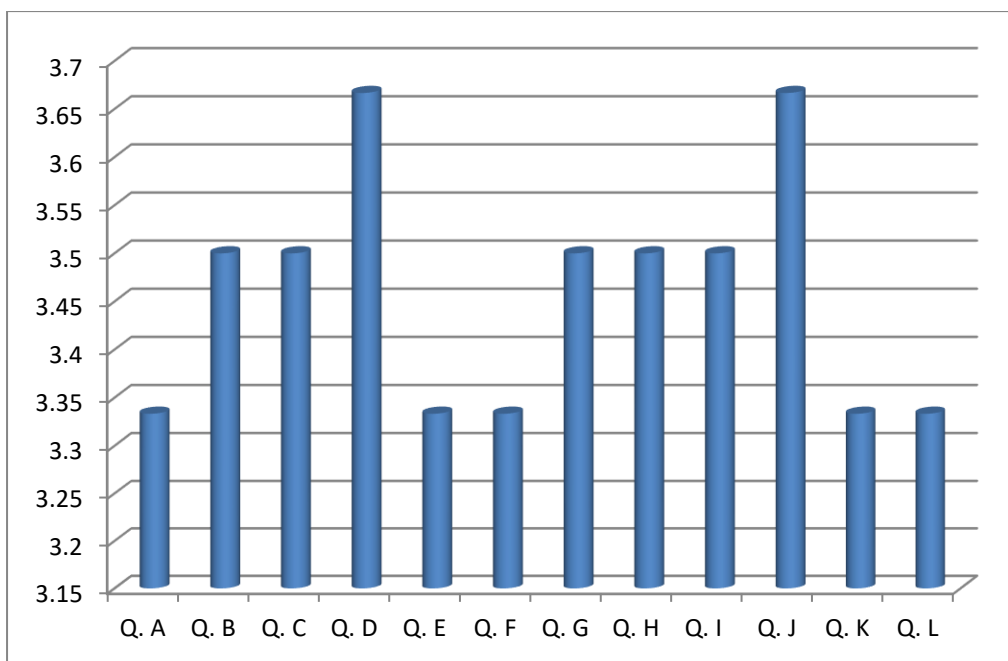
Dept. of Bengali



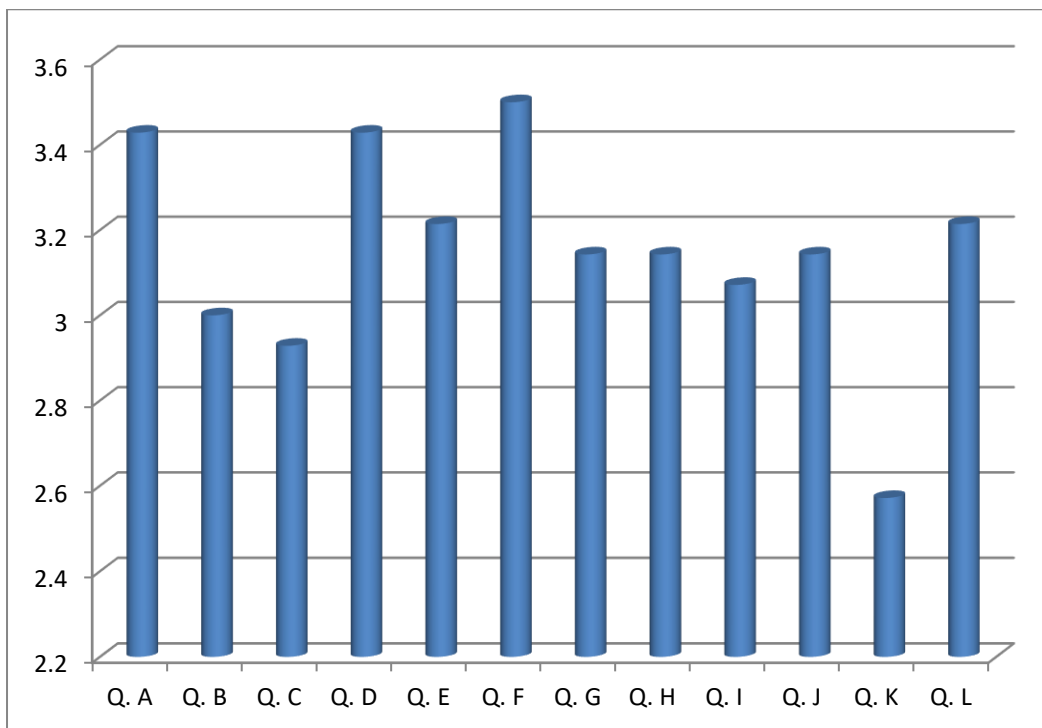
Dept. of Botany



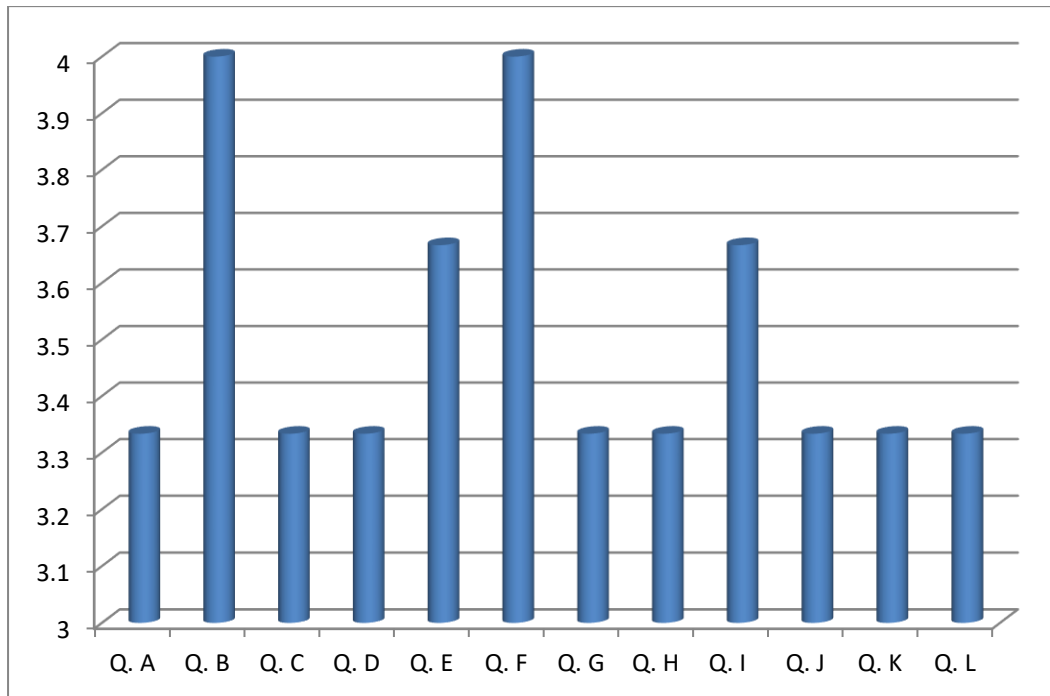
Dept. of Chemistry



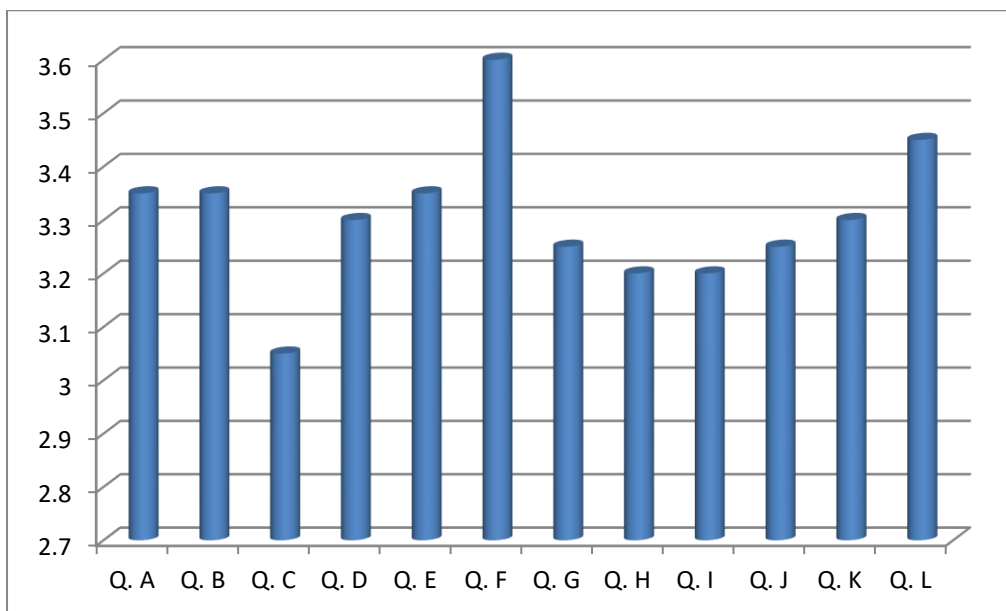
Dept. of Commerce



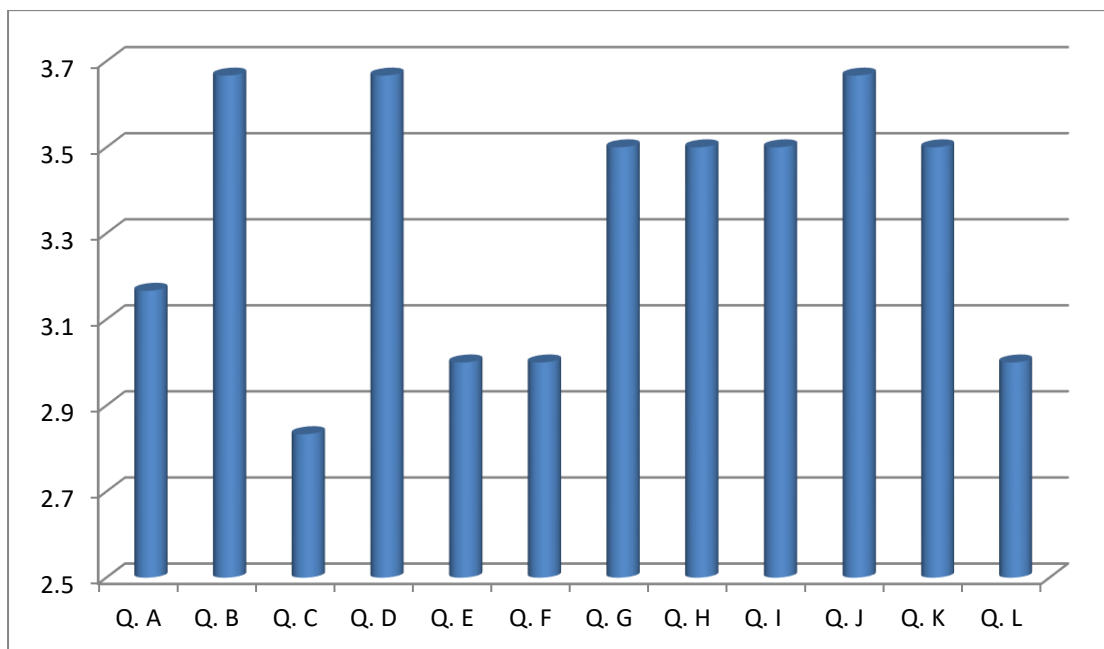
Dept. of Economics



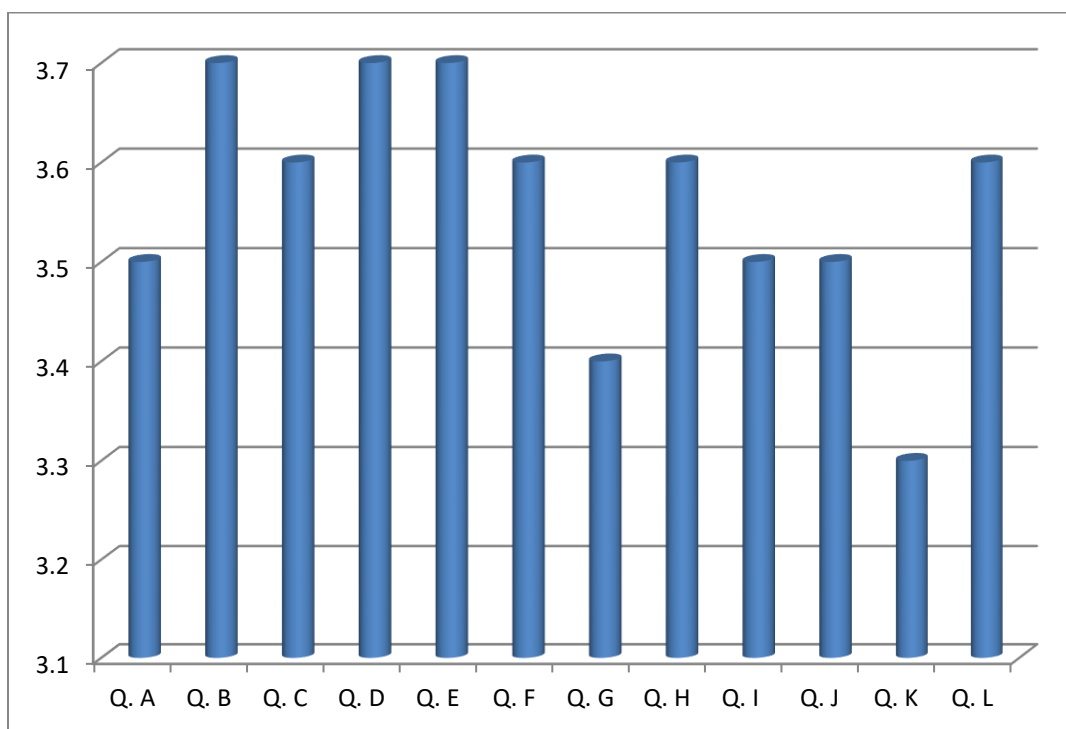
Dept. of English



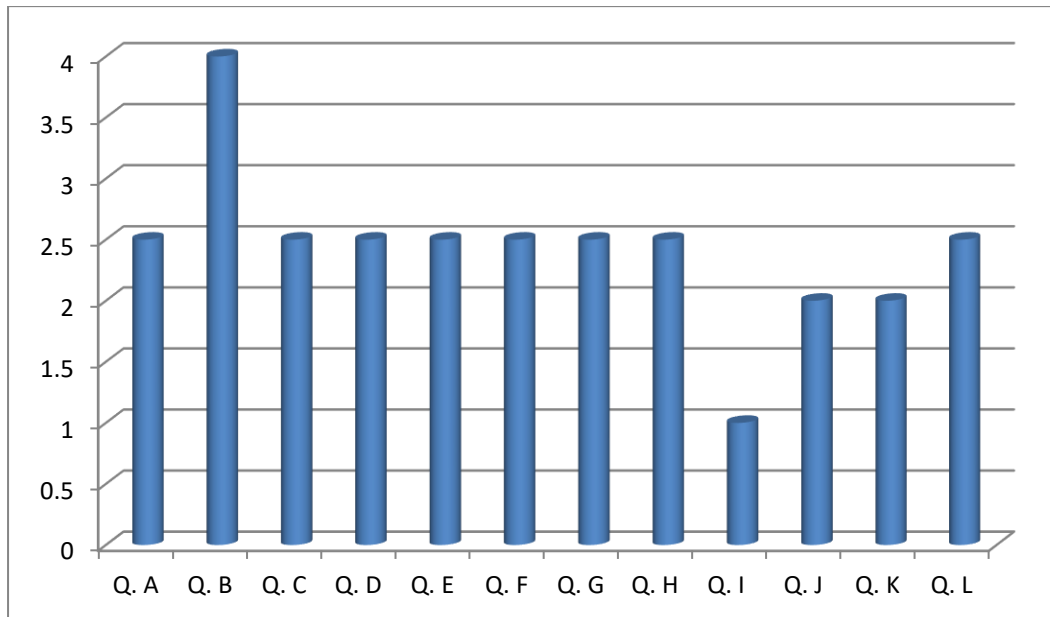
Dept. of Geography



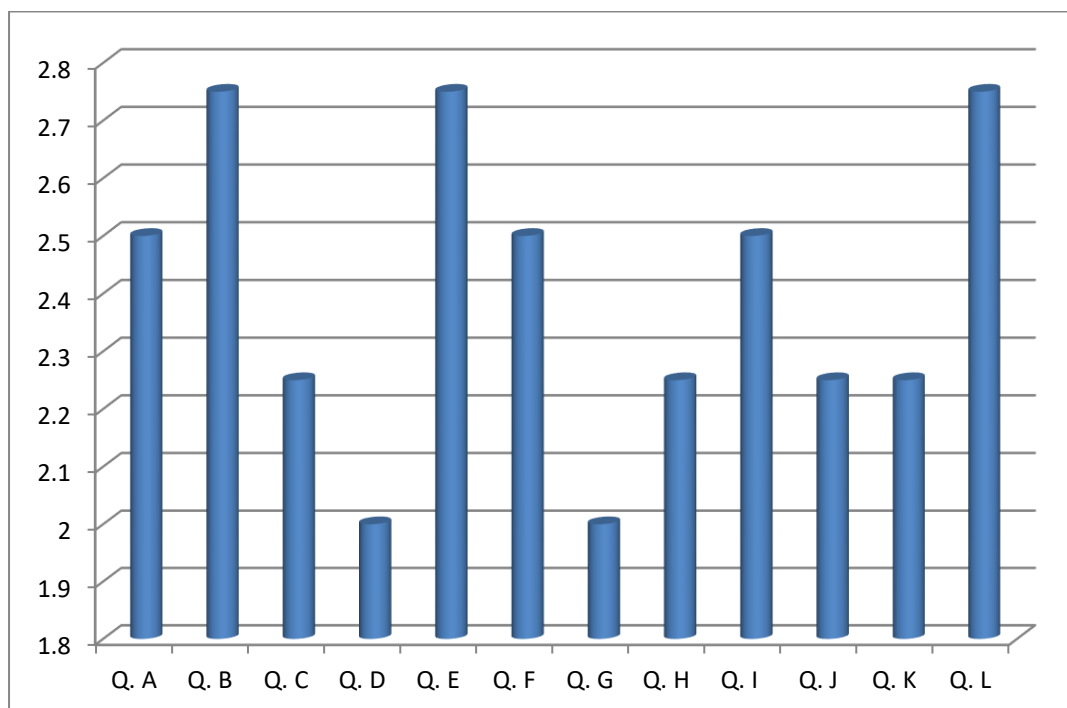
Dept. of History



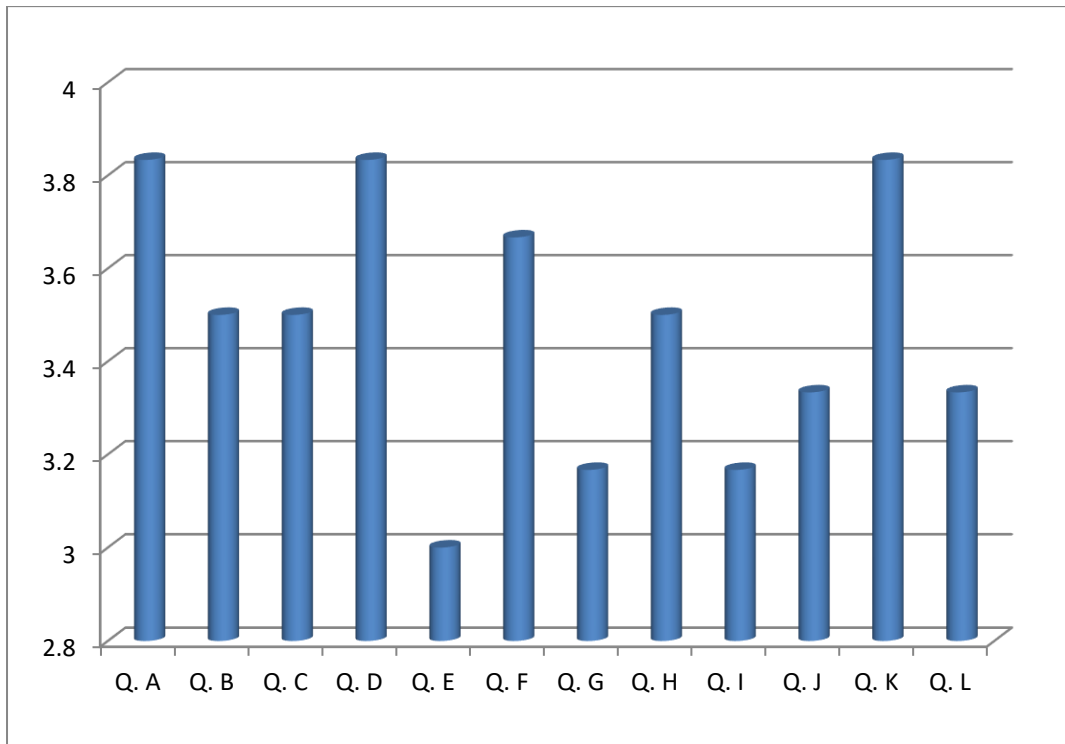
Dept. of Mass communication and Journalism



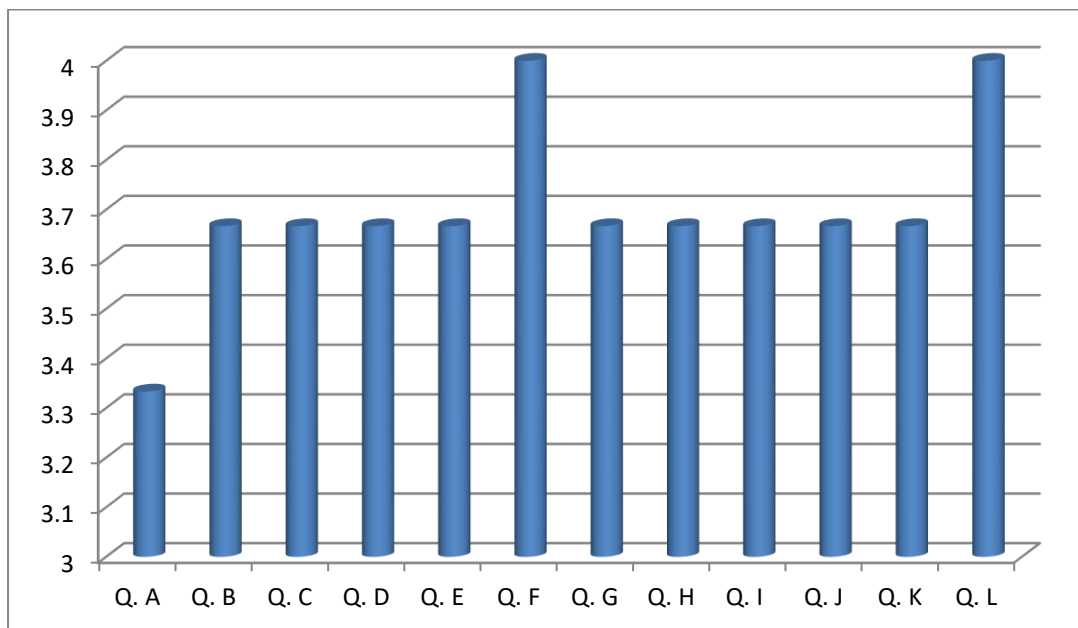
Dept. of Mathematics



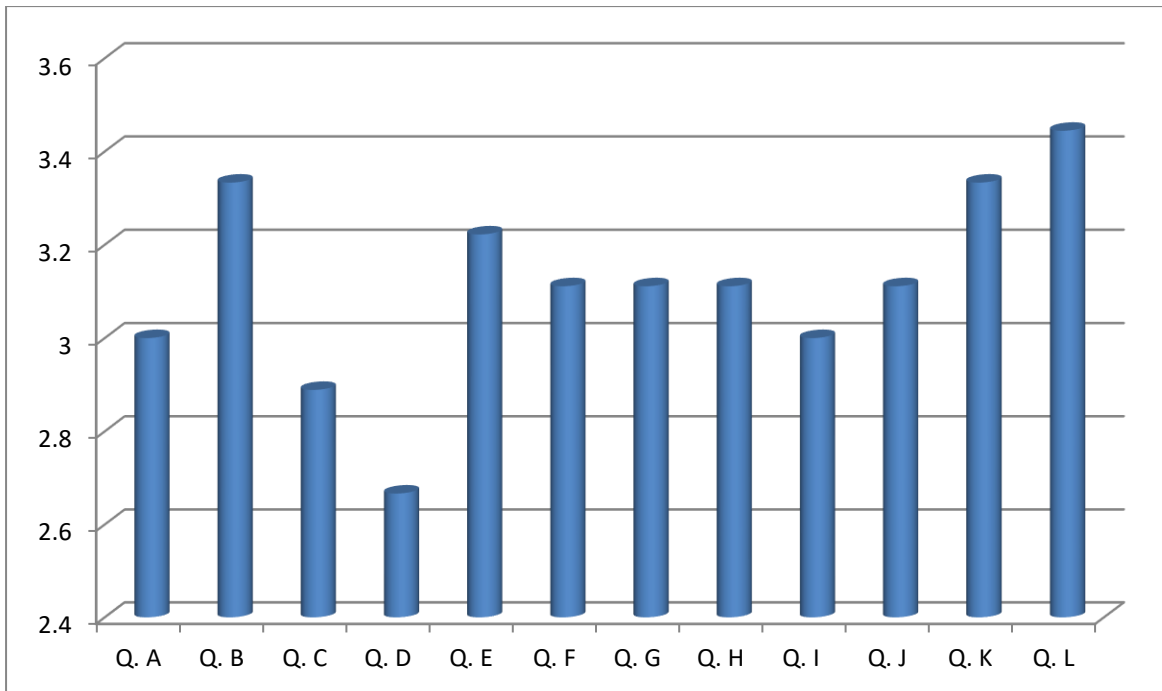
Dept. of Philosophy



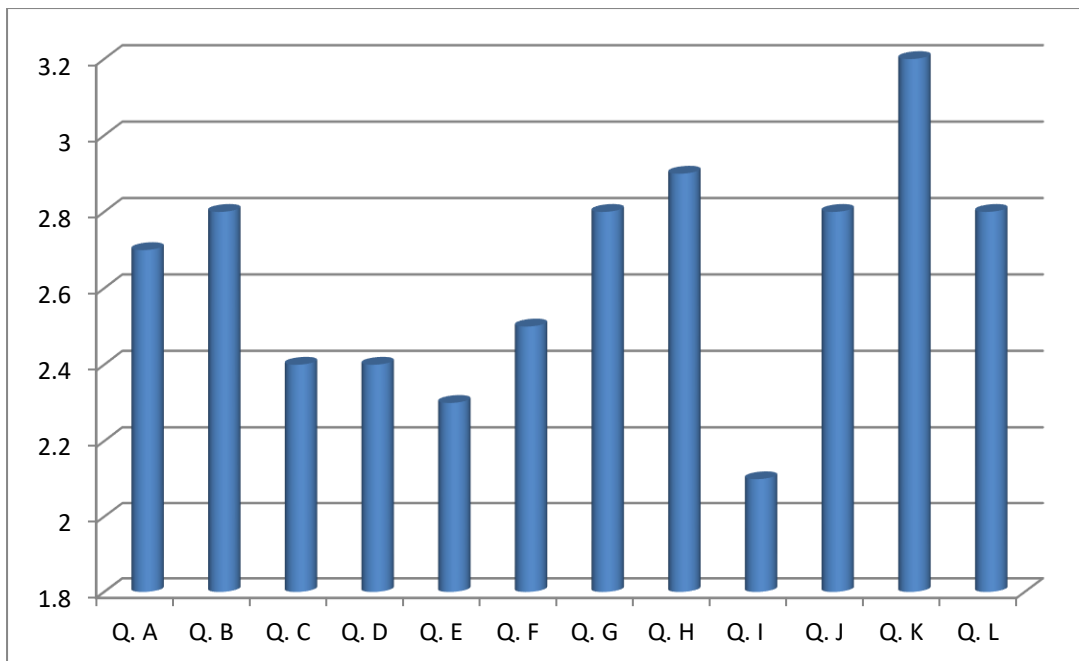
Dept. of Physics



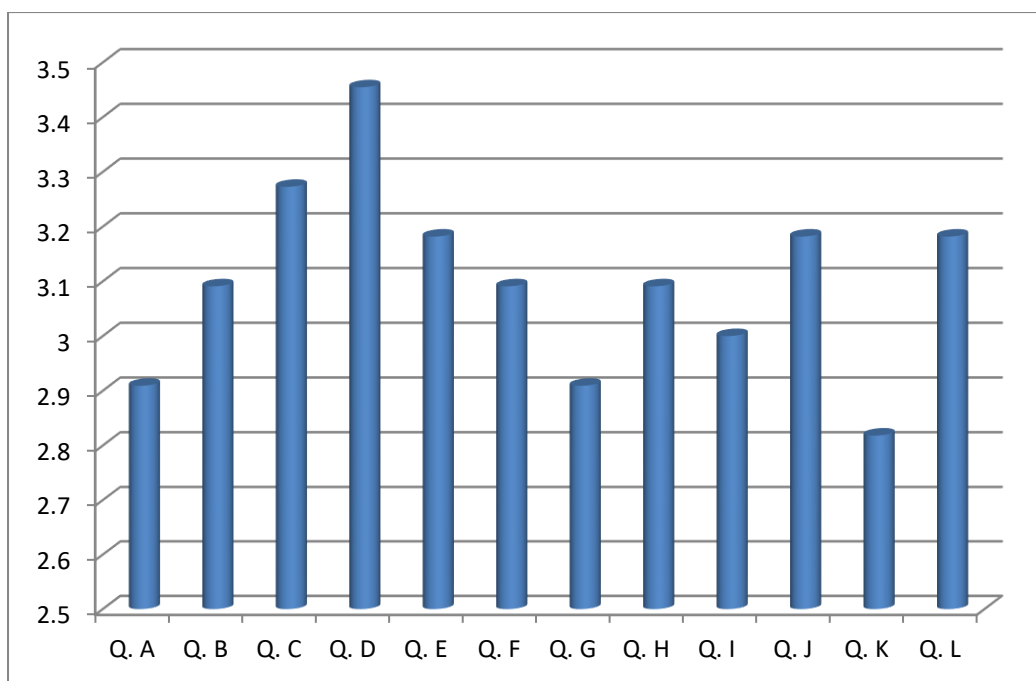
Dept. of Political Science



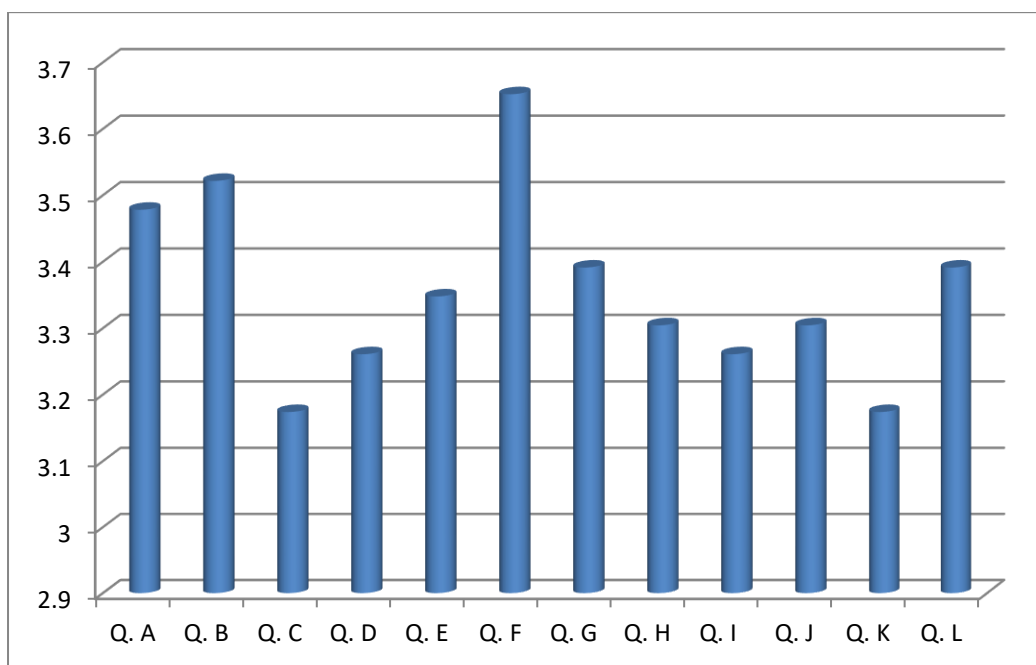
Dept. of Psychology



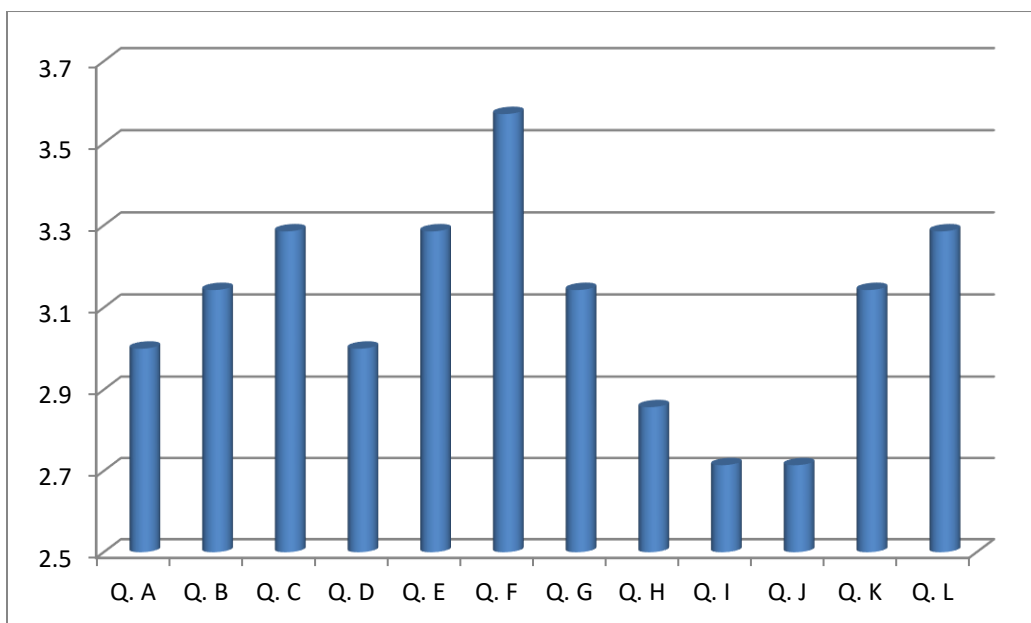
Dept. of Sanskrit



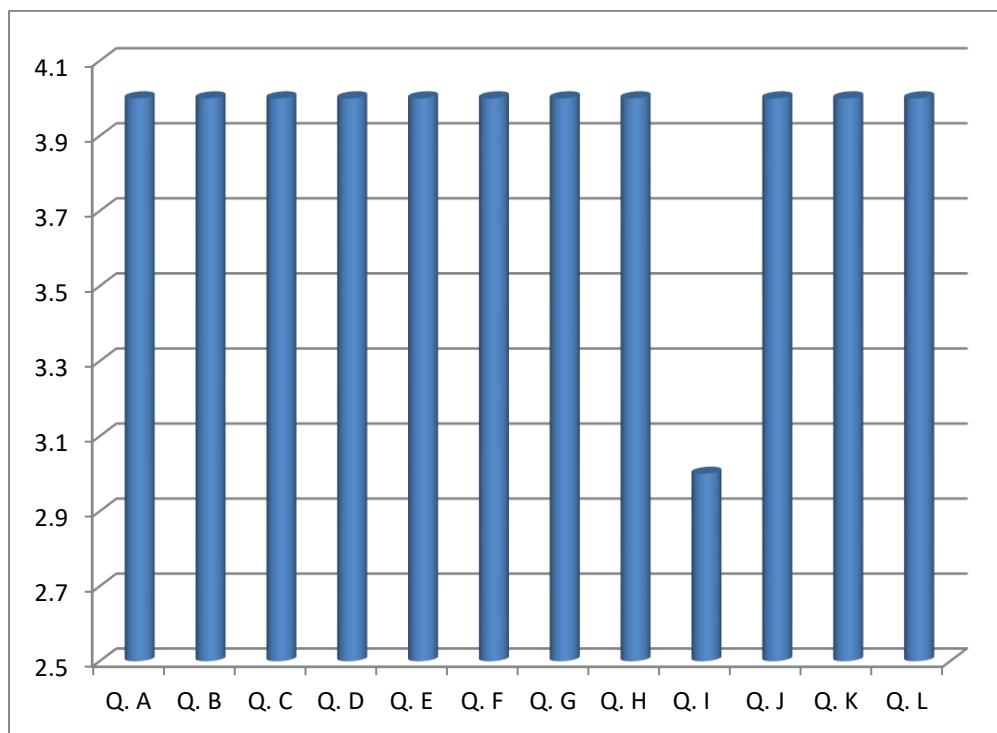
Dept. of Urdu



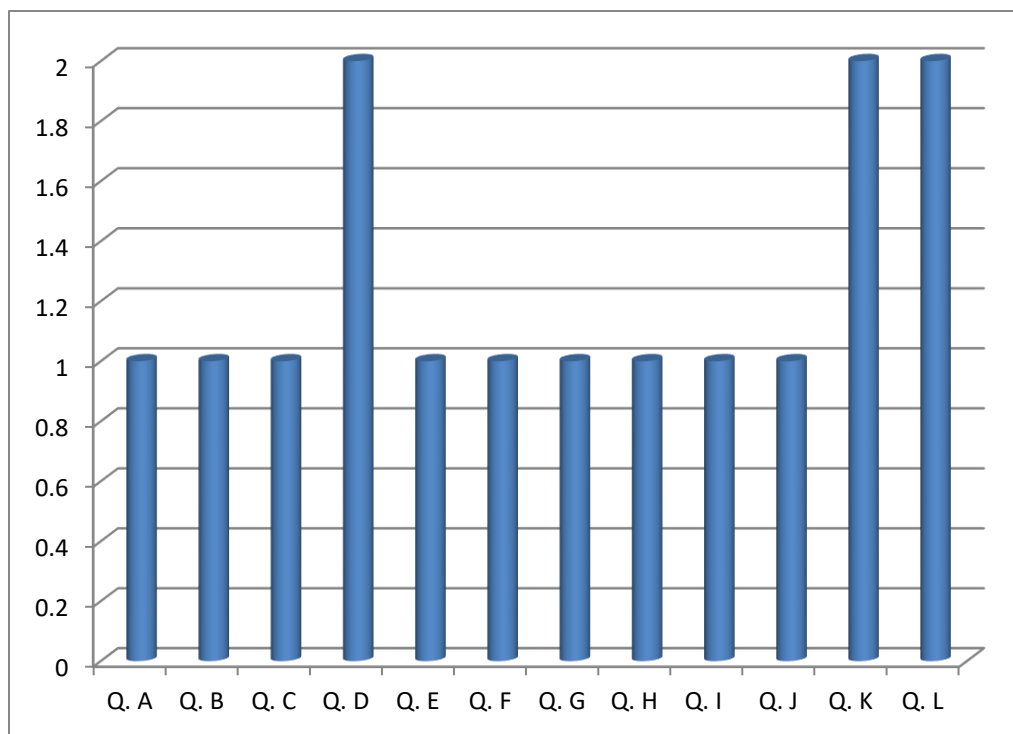
Dept. of Zoology



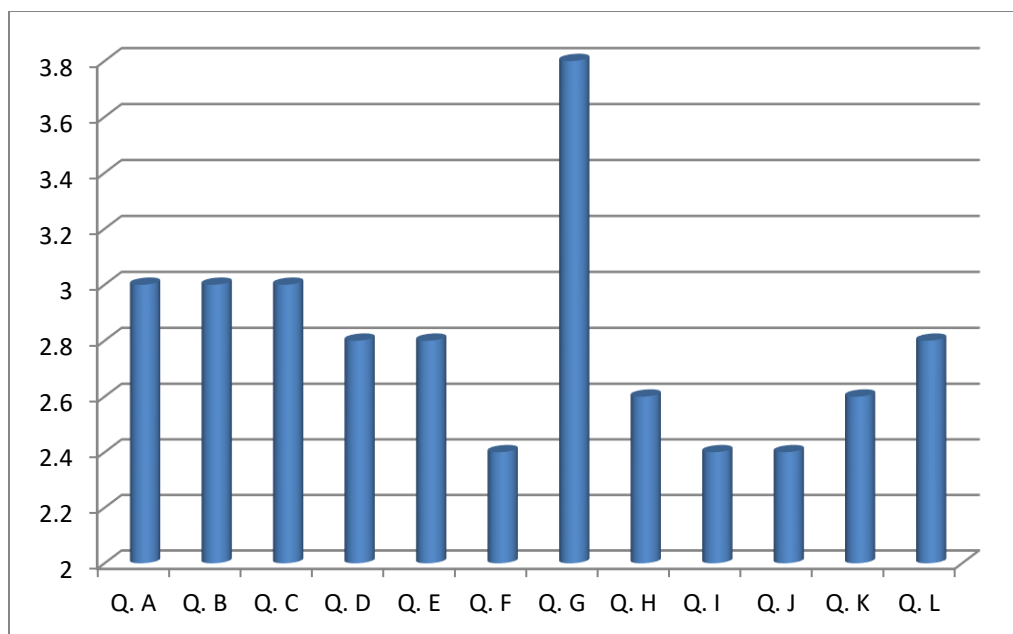
B. A. Gen



B. Sc. Gen



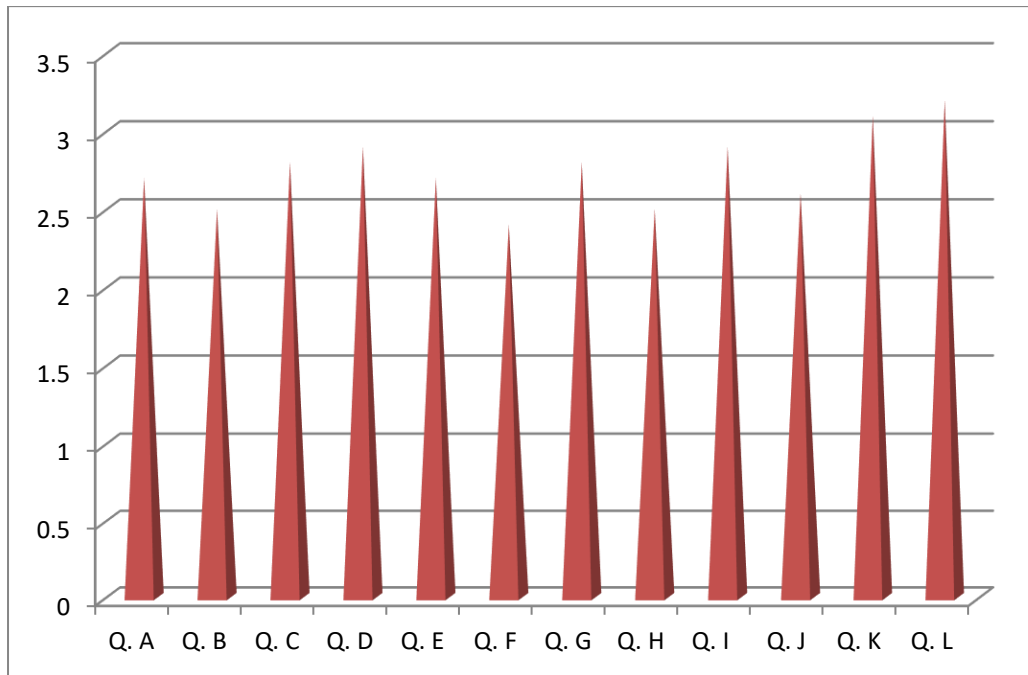
B. Com. Gen



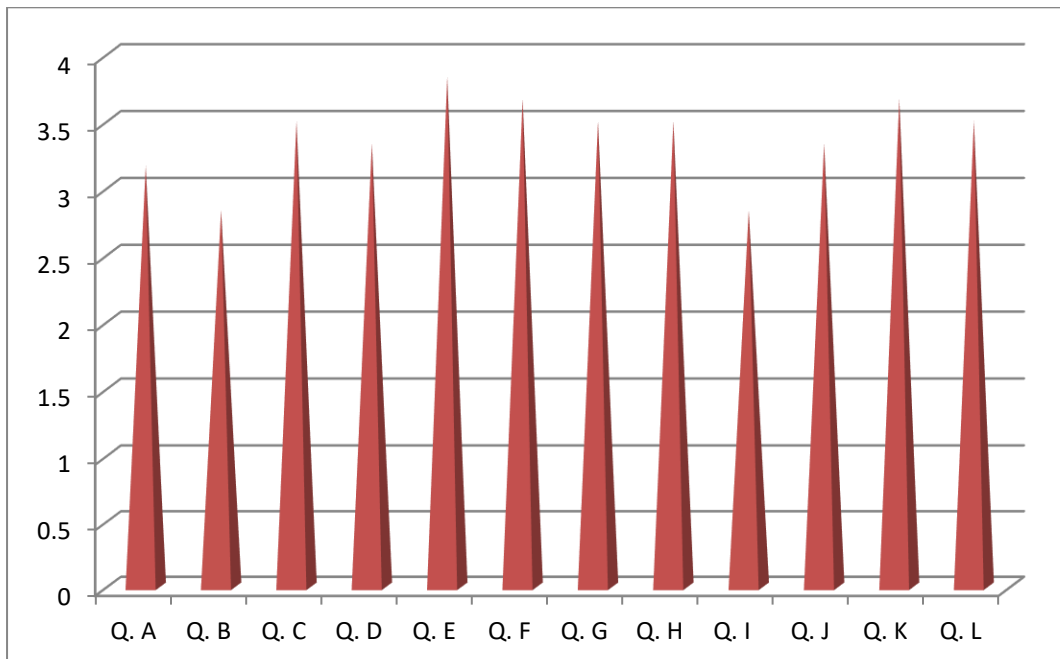
Analysis of Teachers' Feedback, 2022

- Q. A - The content and phrasing of the syllabus clear and concise.**
- Q. B - Time stipulated is adequate to complete the syllabus**
- Q. C - Syllabus incorporates adequate practical/ field trips/project work**
- Q. D - Audio-visual mode and extension activities are good methods for supplementing the lecture-mode.**
- Q. E - Lesson Plan helps structuring your method of teaching better**
- Q. F - The syllabus gives a comprehensive idea about the discipline.**
- Q. G - The syllabus includes issues of contemporary relevance.**
- Q. H - The scope to try innovative methods for better teaching-learning process.**
- Q. I - The number of teachers in the department is adequate to deal with the syllabus.**
- Q. J - Professional development activities (e.g., Orientation programme, Refresher Course, Short-term Course, Workshop etc.) have a positive impact on your teaching.**
- Q. K - The level of support you receive from the institution for your professional development.**
- Q. L - The level of support you receive from the administration for organizing Extension activities.**

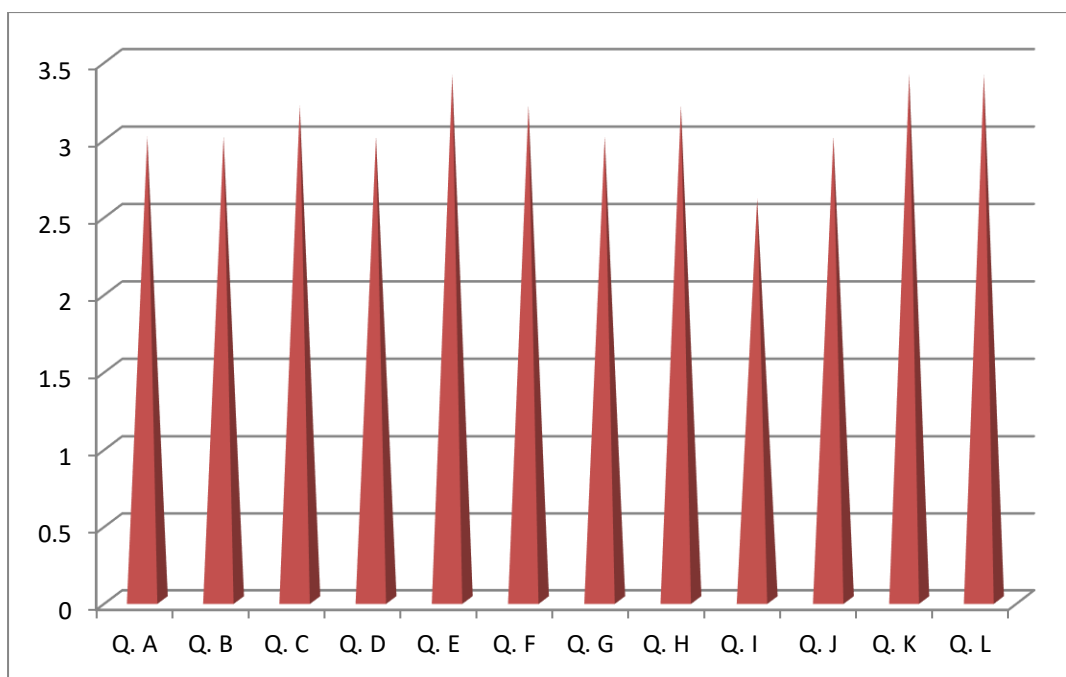
Dept. of Bengali



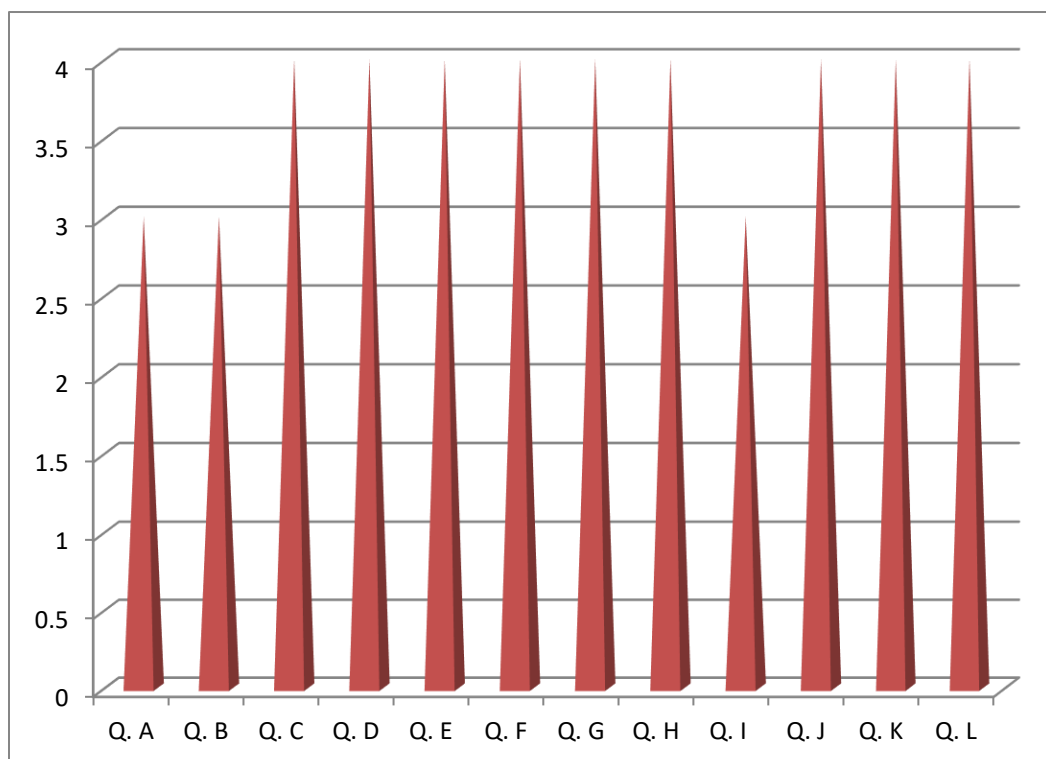
Dept. of Botany



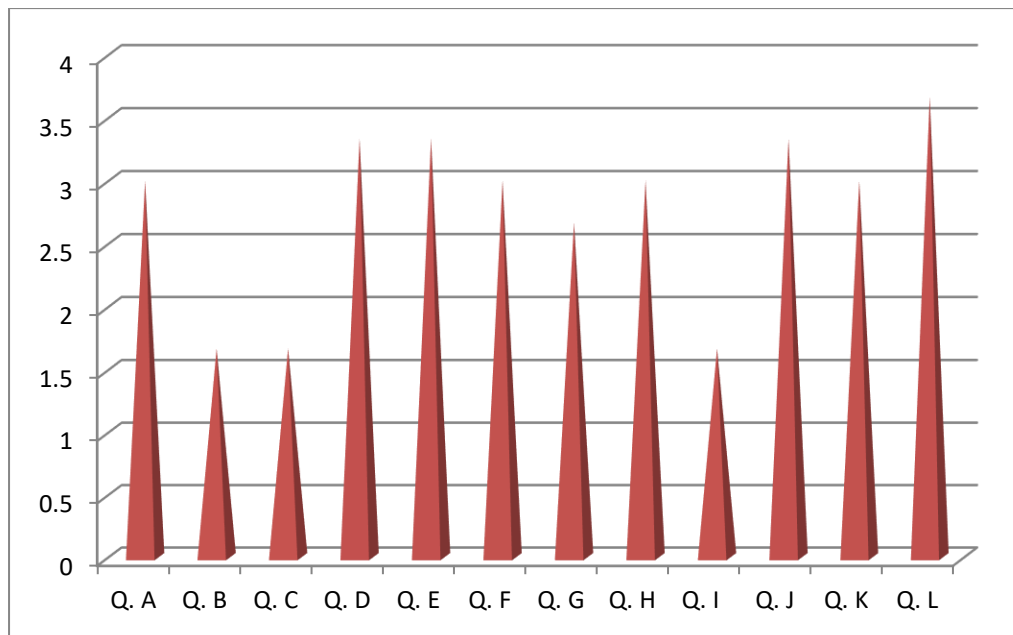
Dept. of Chemistry



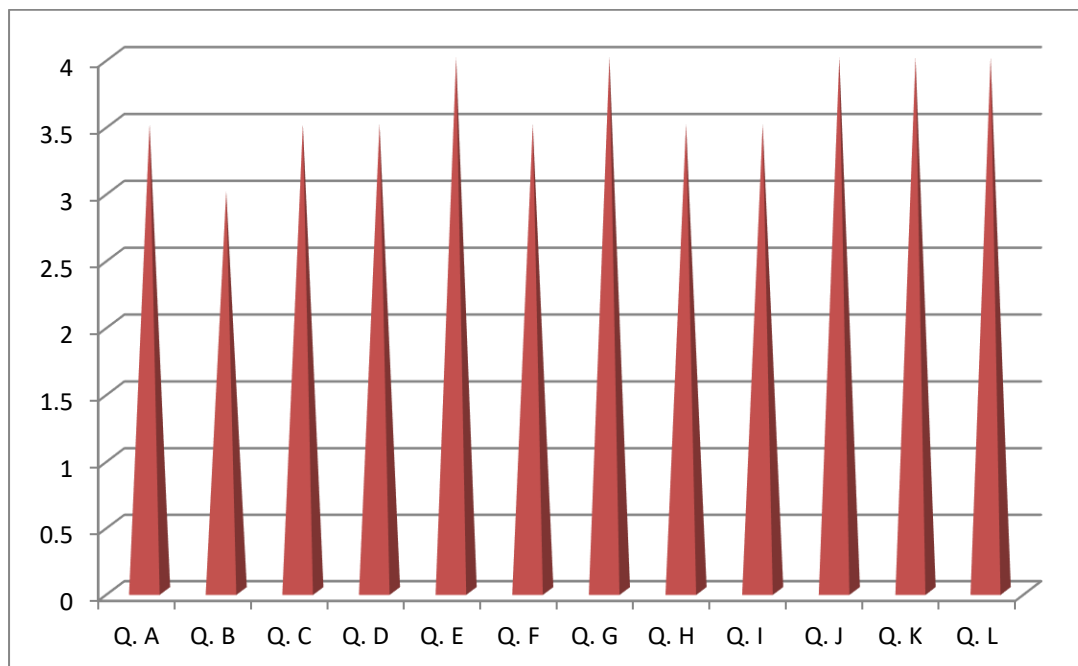
Dept. of Commerce



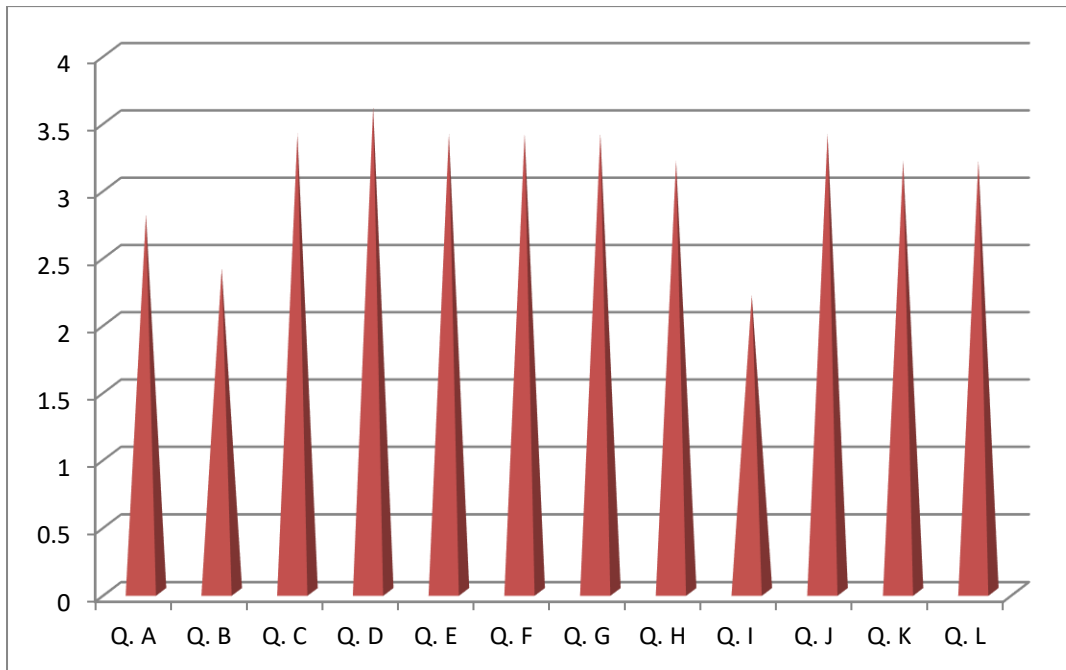
Dept. of Economics



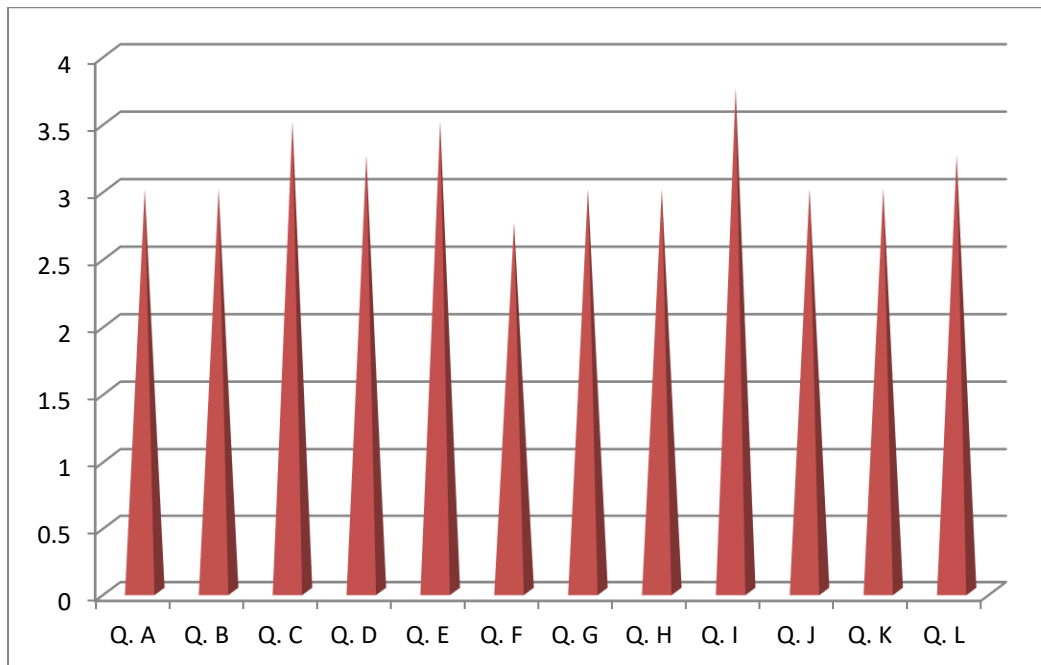
Dept. of English



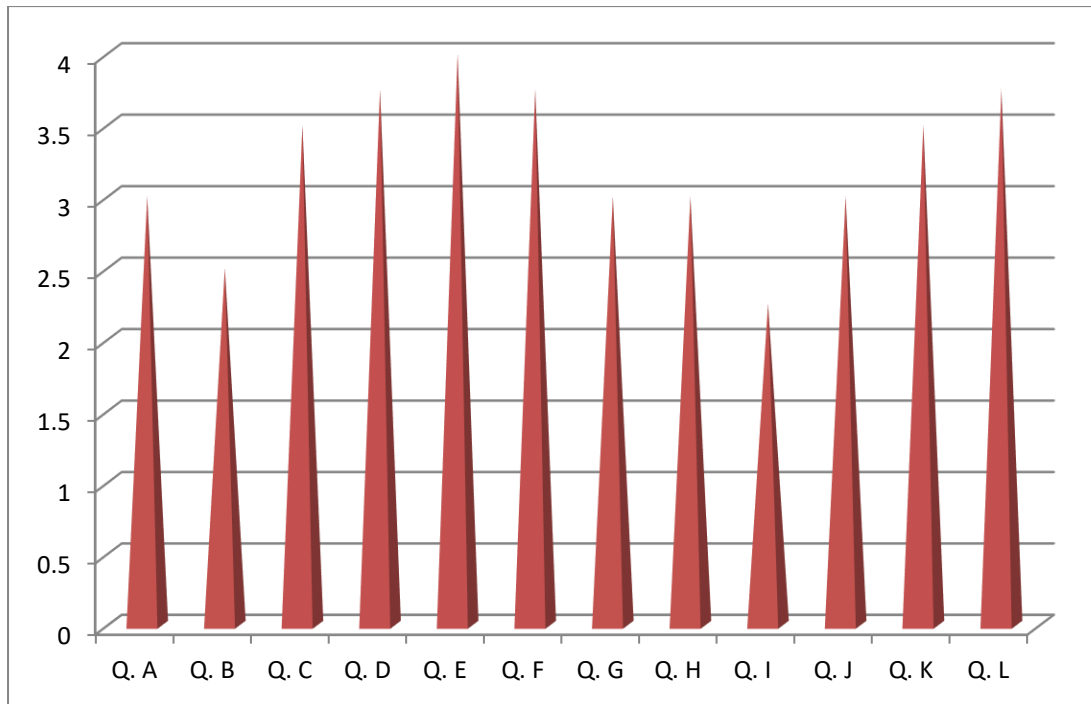
Dept. of Geography



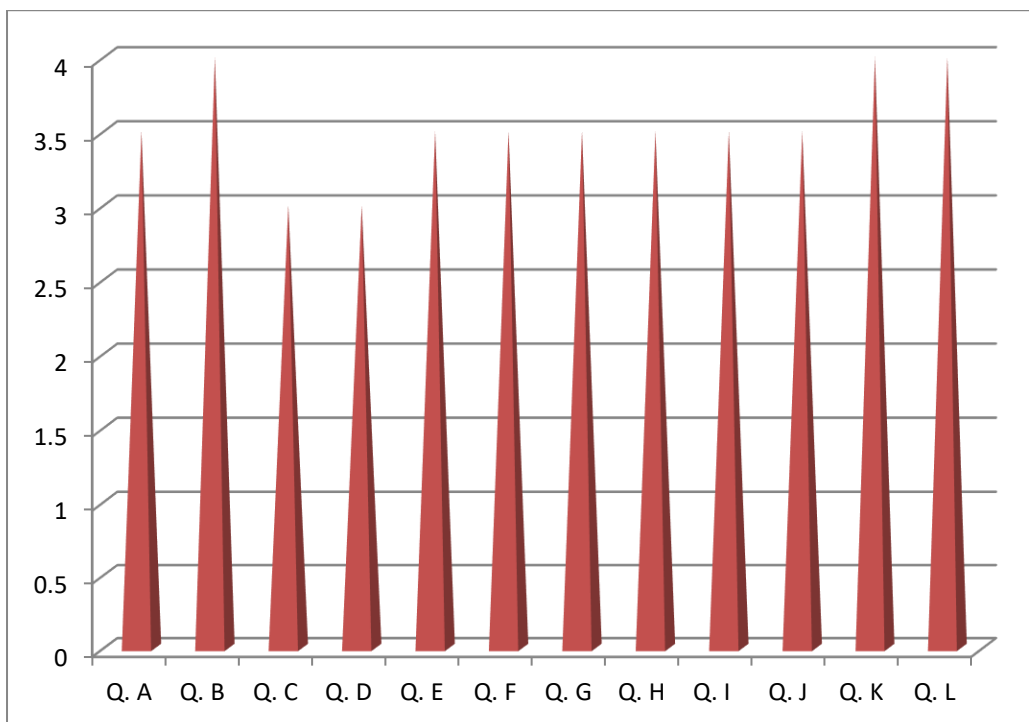
Dept. of History



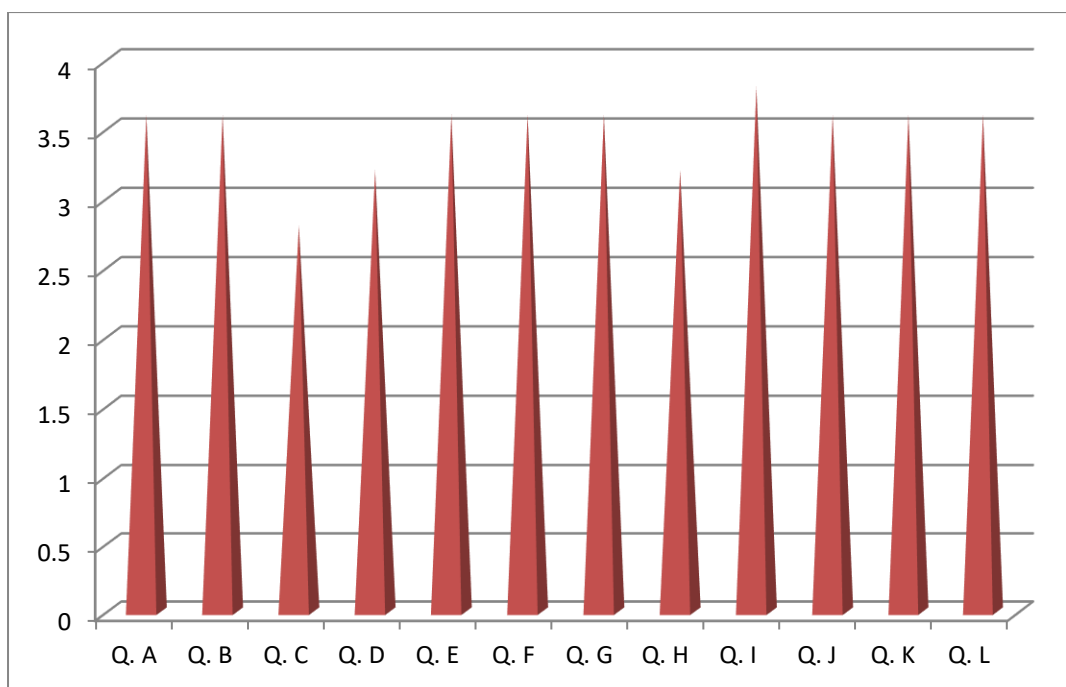
Dept. of Mathematics



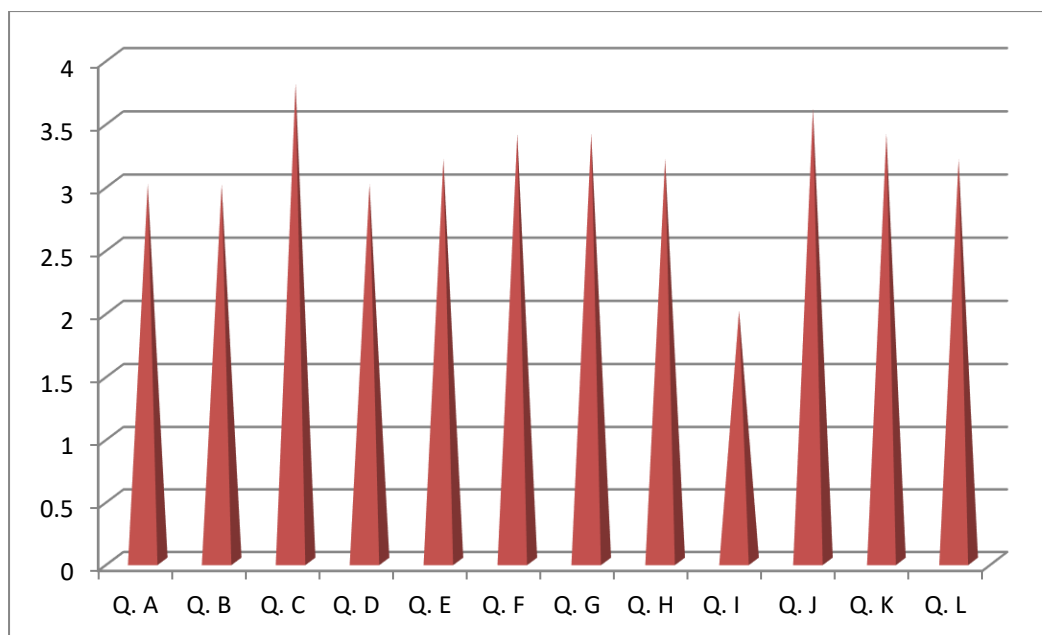
Dept. of Mass Com and Journalism



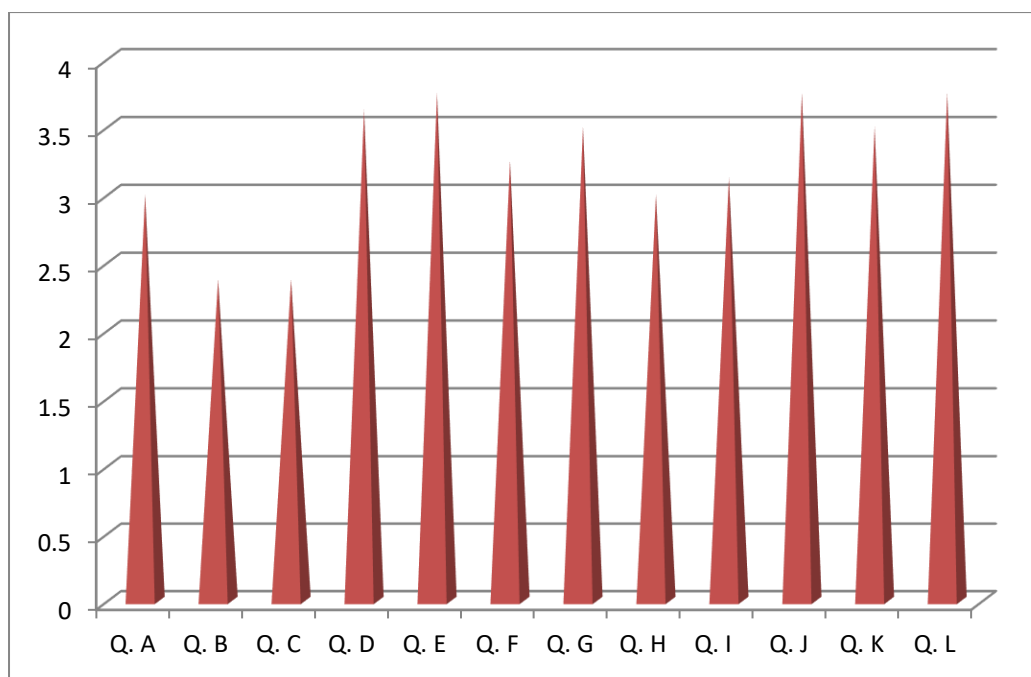
Dept. of Philosophy



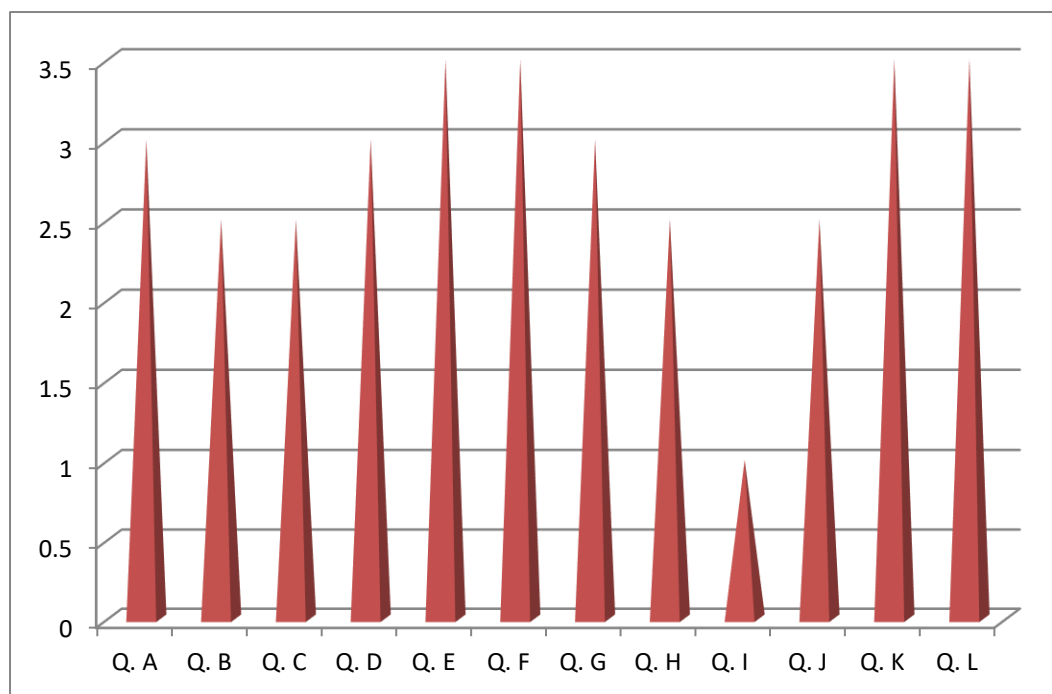
Dept. of Physics



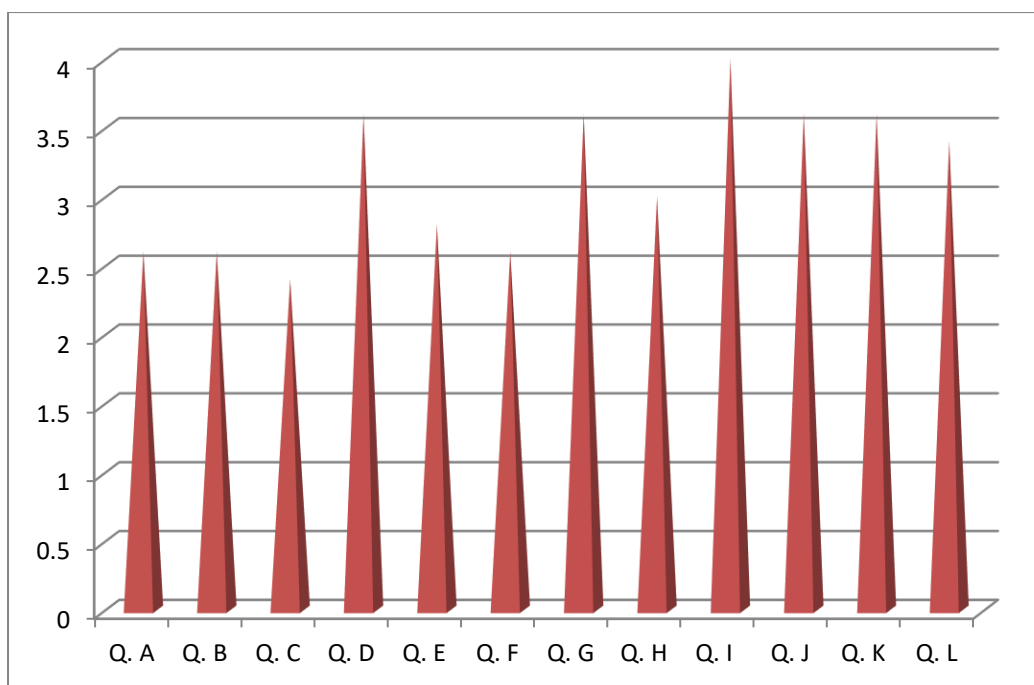
Dept. of Political Science



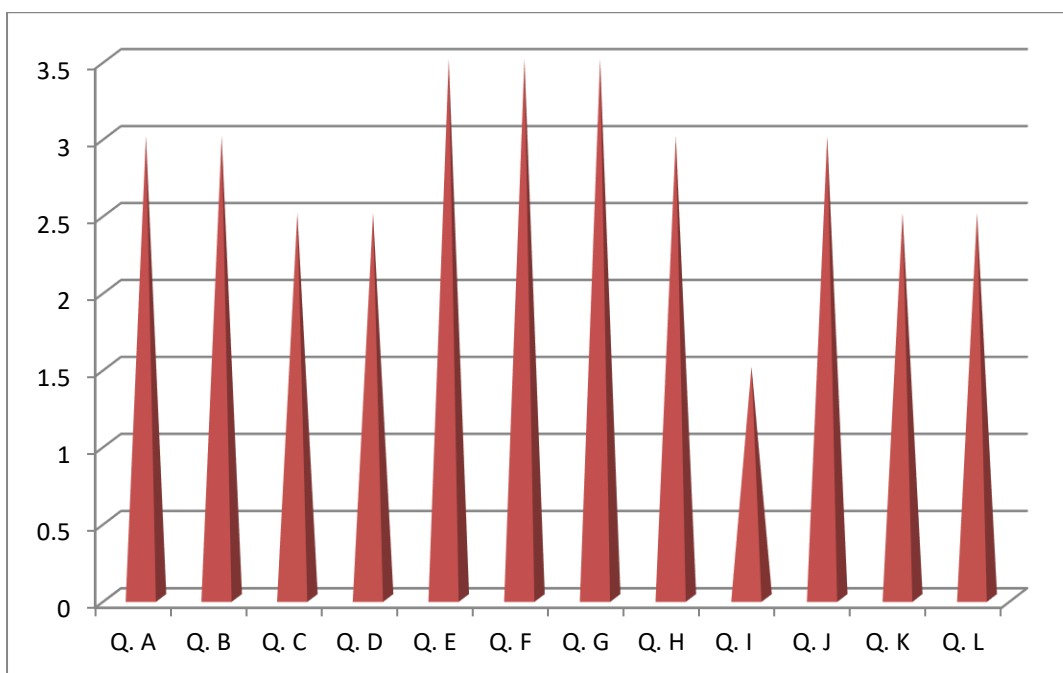
Dept. of Psychology



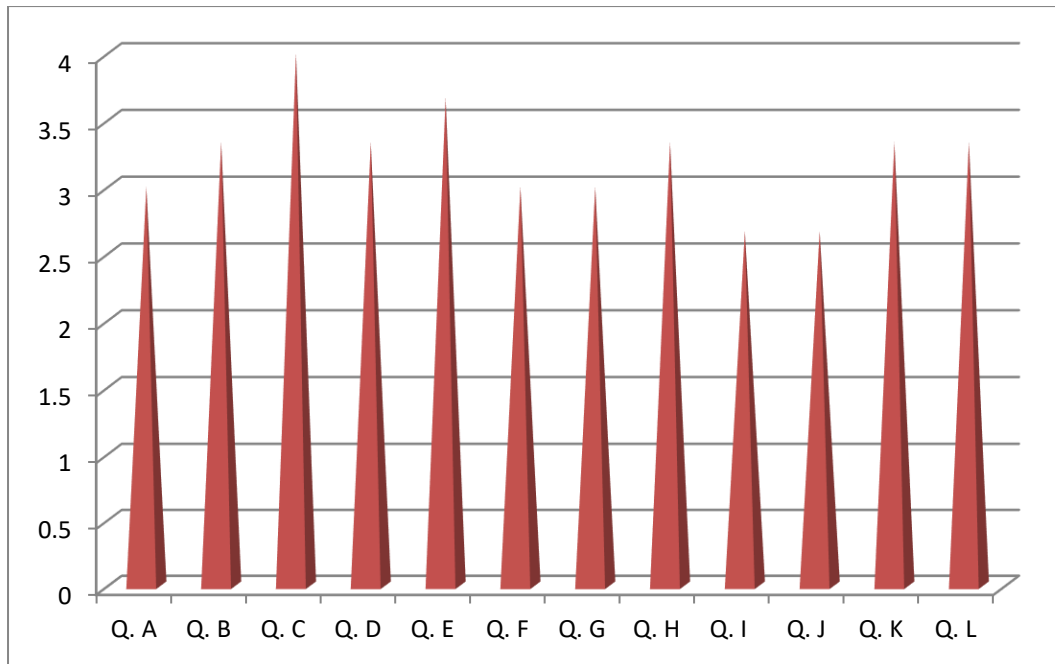
Dept. of Sanskrit



Dept. of Urdu



Dept. of Zoology



Analysis of Alumni Feedback, 2022

Q. A - Adequate knowledge gained during your course of study.

Q. B - Knowledge gained in college is relevant in your present study/job.

Q. C - Faculty members were co-operative and approachable for academic support.

Q. D - Curriculum facilitate placement opportunities on campus/off-campus.

Q. E - Career counseling and guidance for higher studies.

Q. F - Getting regular updates about activities and development from college.

Q. G - Adequate extension activities to support the syllabus.

Q. H - Adequate infra-structural facilities.

Q. I - Role of college in instilling confidence.

Q. J - Overall rating of the course and its transaction.

